

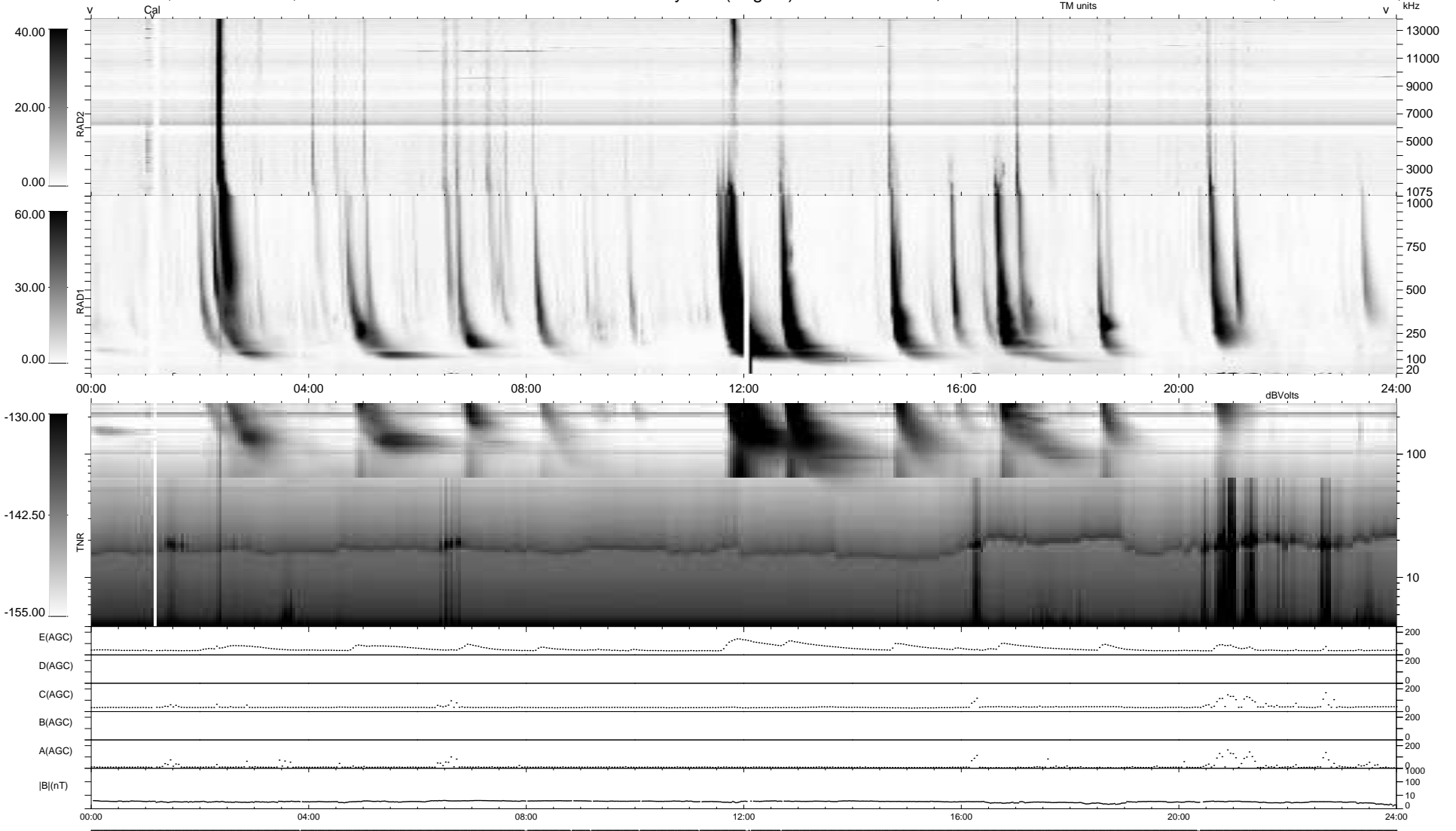
13 bad + 927 good MF/940MF projected (98%) - 0 missing MFs  
 Avg interval = 180 secs  
 Re = 237.29 (216.19, -97.70, 4.83 GSE)

windlib 2.0b

LZ version = v01

### WIND/WAVES Summary Plot (Page 1) for 26-DEC-2011, DOY = 360

DAILY 2012-01-13 18:28:31  
 Re = 236.04 (215.03, -97.27, 4.09 GSE)



RAD2  
 Antenna Ey  
 Mode LIN(1)  
 SUM/SEP SEP  
 Toggle OFF

RAD1  
 Antenna Ex  
 Mode LIS(2,4)  
 SUM/SEP SUM  
 Toggle OFF

TNR  
 Antenna ExEy  
 Mode A-32  
 Sweep ACE