

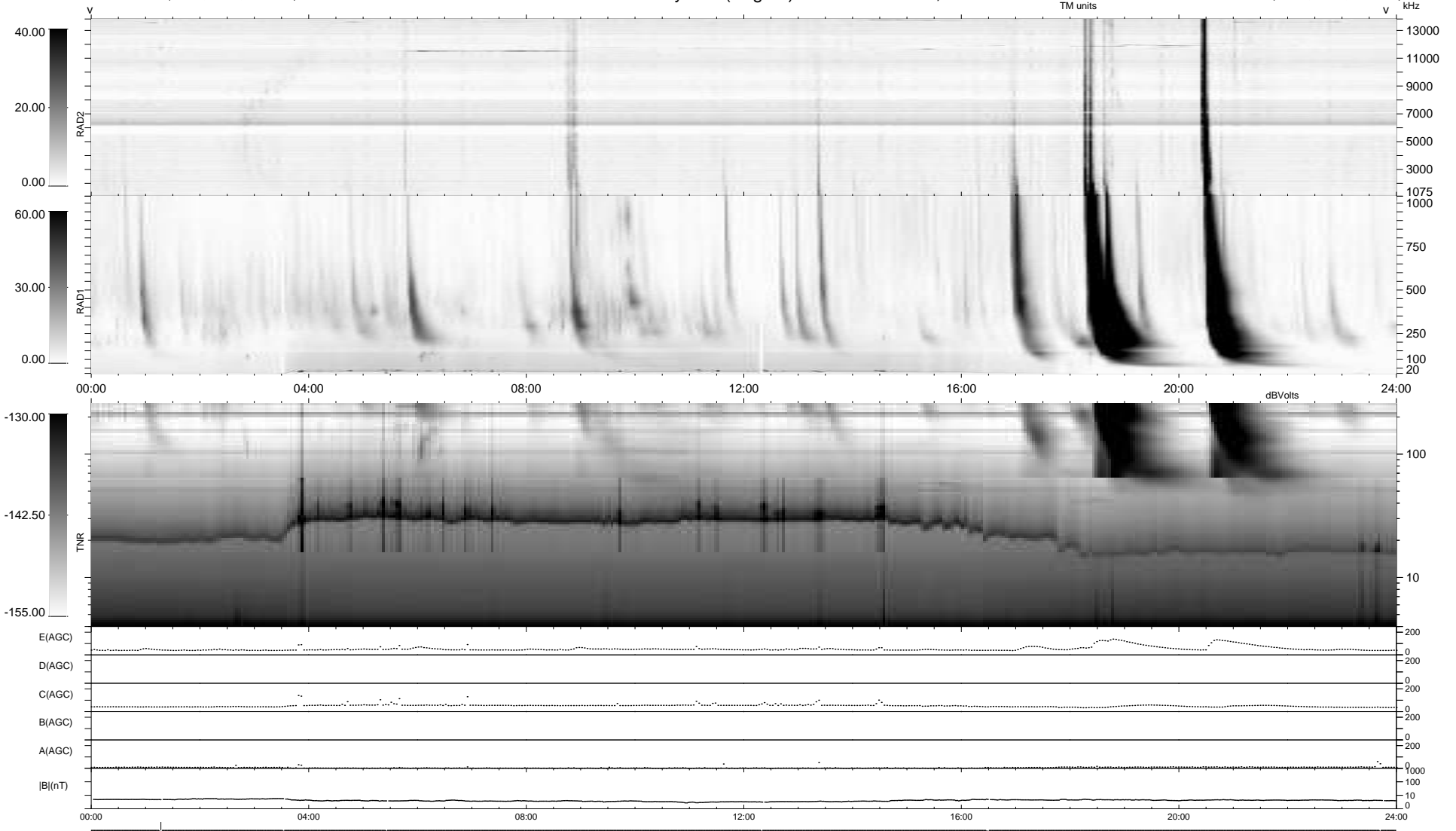
7 bad + 931 good MF/939MF projected (99%) - 1 missing MF  
 Avg interval = 180 secs  
 Re = 238.50 (217.35, -98.01, 5.58 GSE)

windlib 2.0b

LZ version = v01

### WIND/WAVES Summary Plot (Page 1) for 25-DEC-2011, DOY = 359

DAILY 2012-01-13 18:27:35  
 Re = 237.30 (216.20, -97.70, 4.84 GSE)



RAD2  
 Antenna Ey .....  
 Mode LIN(1) .....  
 SUM/SEP SEP .....  
 Toggle OFF .....  
 RAD1  
 Antenna Ex .....  
 Mode LIS(2,4) .....  
 SUM/SEP SUM .....  
 Toggle OFF .....  
 TNR  
 Antenna ExEy .....  
 Mode A-32 .....  
 Sweep ACE .....