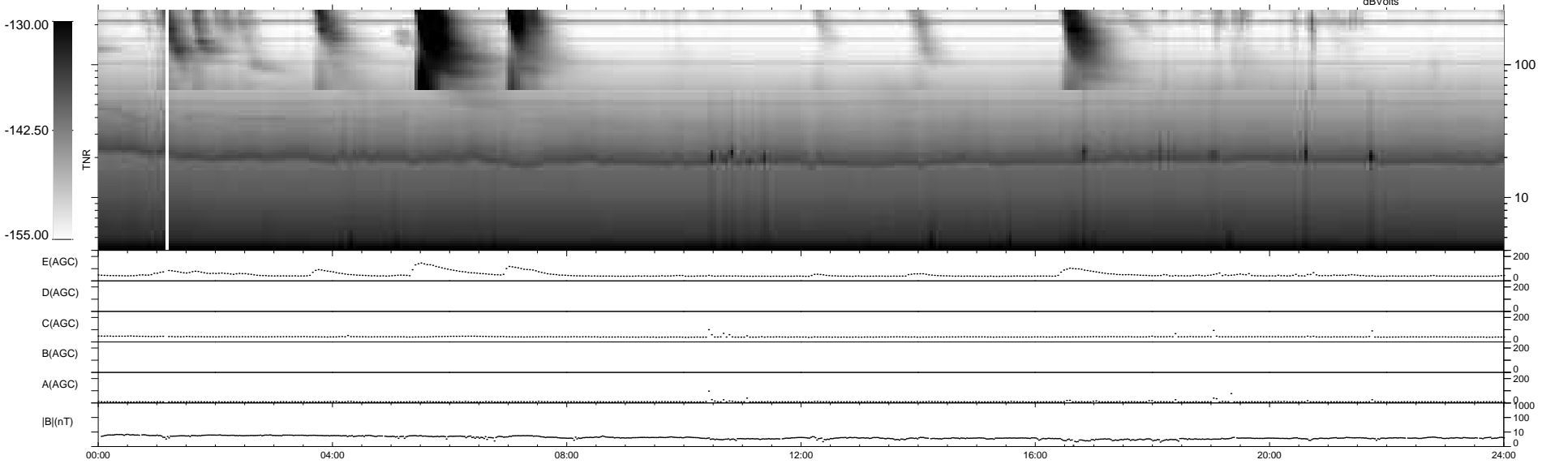
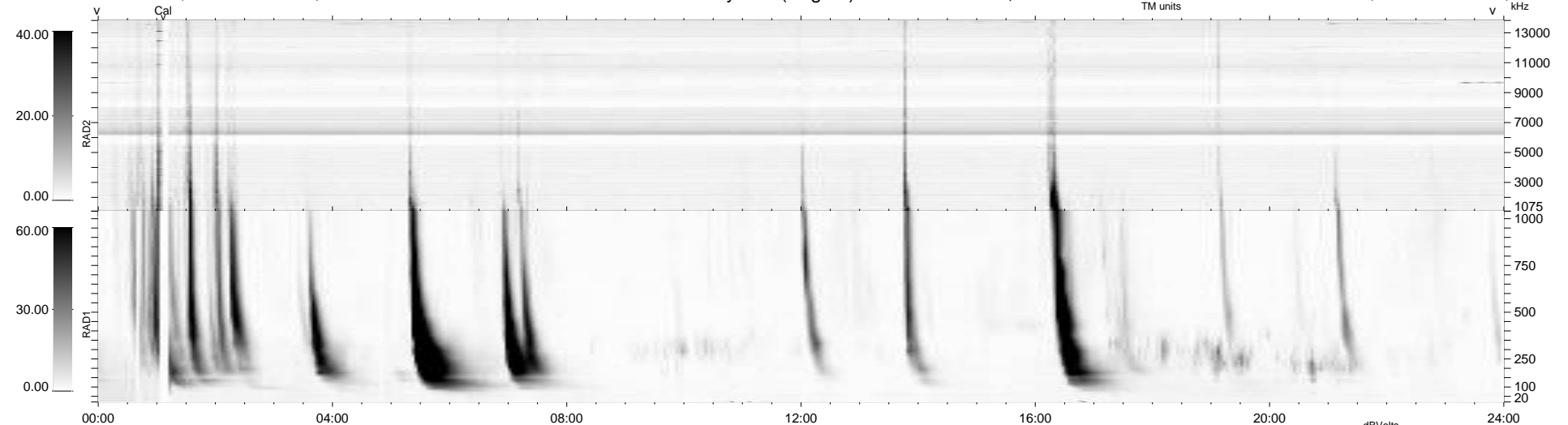


8 bad + 931 good MF/939MF projected (99%) - 0 missing MFs
 Avg interval = 180 secs
 Re = 241.72 (220.75, -98.18, 7.76 GSE)

windlib 2.0b LZ version = v02
 DAILY 2012-01-13 18:24:46
 Re = 240.72 (219.64, -98.26, 7.04 GSE)

WIND/WAVES Summary Plot (Page 1) for 22-DEC-2011, DOY = 356



RAD2
 Antenna Ey
 Mode LIN(1)
 SUM/SEP SEP
 Toggle OFF
 RAD1
 Antenna Ex
 Mode LIS(2,4)
 SUM/SEP SUM
 Toggle OFF
 TNR
 Antenna ExEy
 Mode A-32
 Sweep ACE