

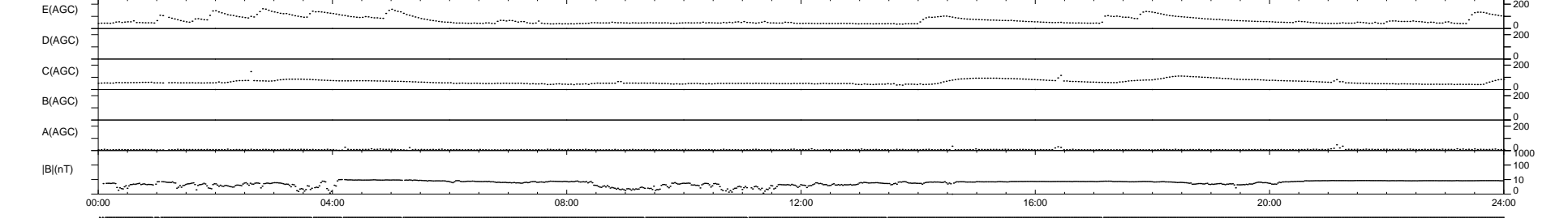
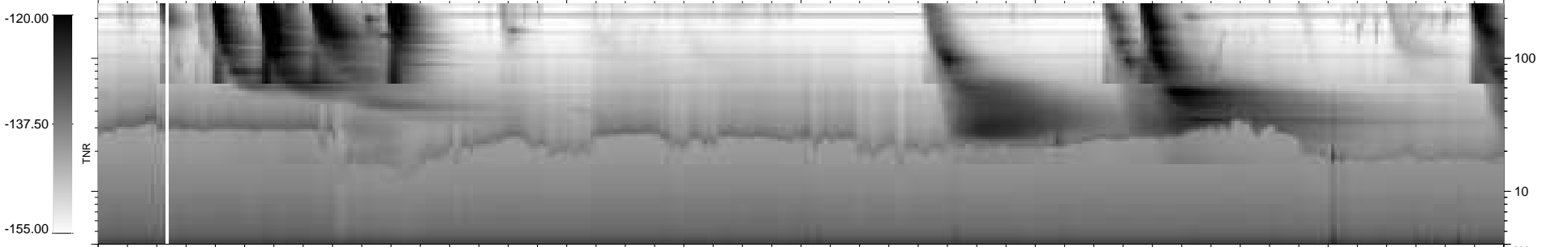
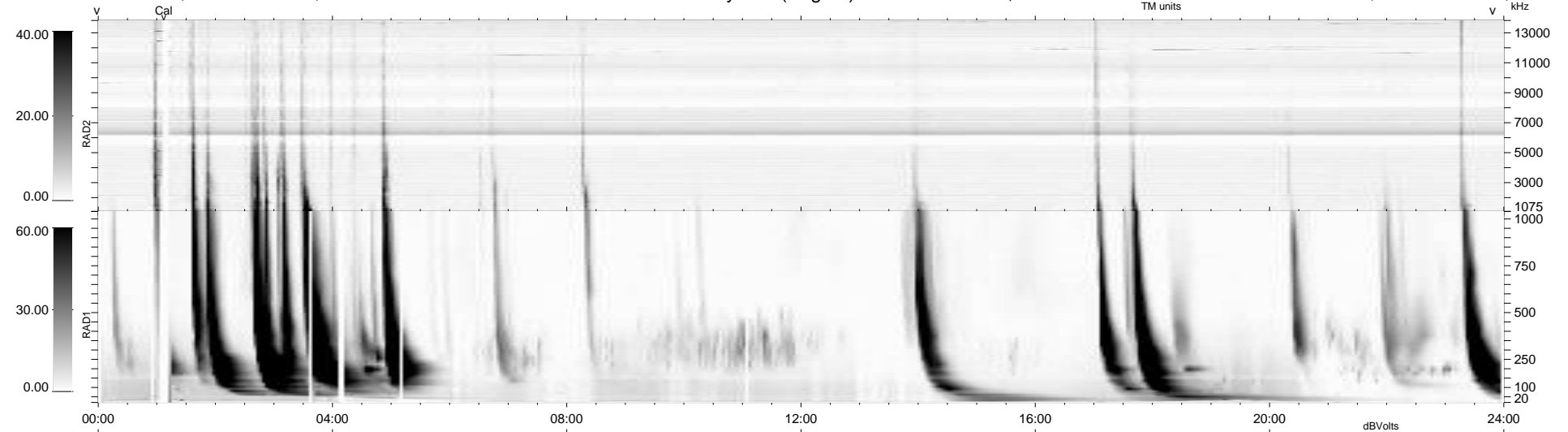
11 bad + 928 good MF/939MF projected (98%) - 0 missing MFs  
 Avg interval = 180 secs  
 Re = 243.53 (222.94, -97.58, 9.17 GSE)

windlib 2.0b

LZ version = v02

### WIND/WAVES Summary Plot (Page 1) for 20-DEC-2011, DOY = 354

DAILY 2012-01-13 18:22:54  
 Re = 242.66 (221.85, -97.95, 8.47 GSE)



RAD2 Antenna Ey .....  
 Mode LIN(1) .....  
 SUM/SEP SEP .....  
 Toggle OFF .....  
 RAD1 Antenna .....  
 Mode .....  
 SUM/SEP .....  
 Toggle .....  
 TNR Antenna ExEy .....  
 Mode A-32 .....  
 Sweep ACE .....