

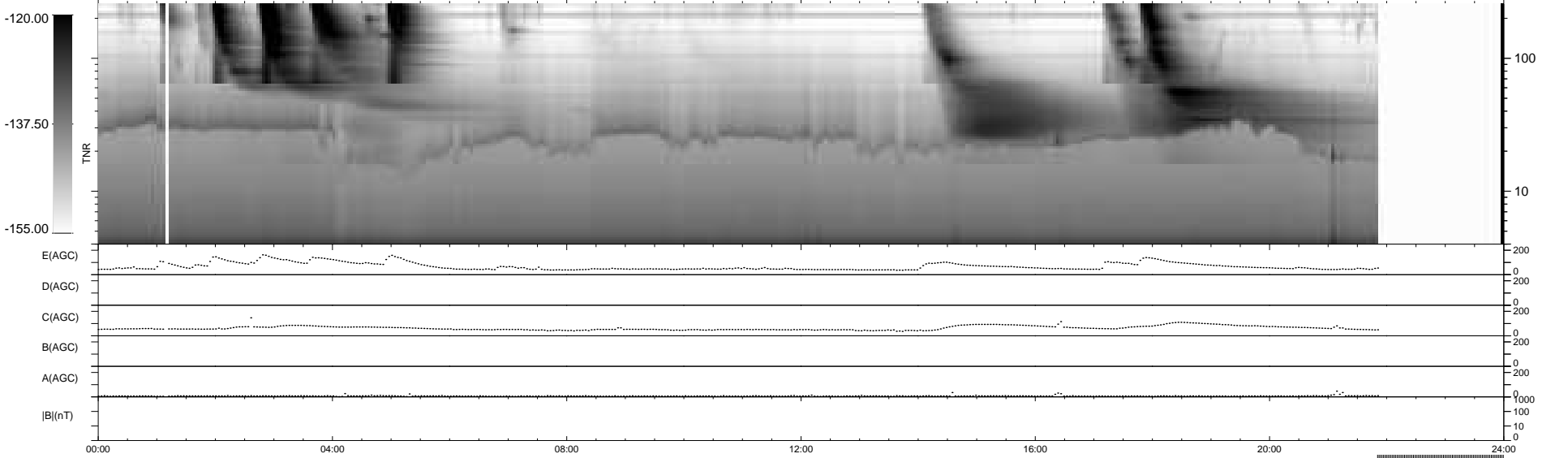
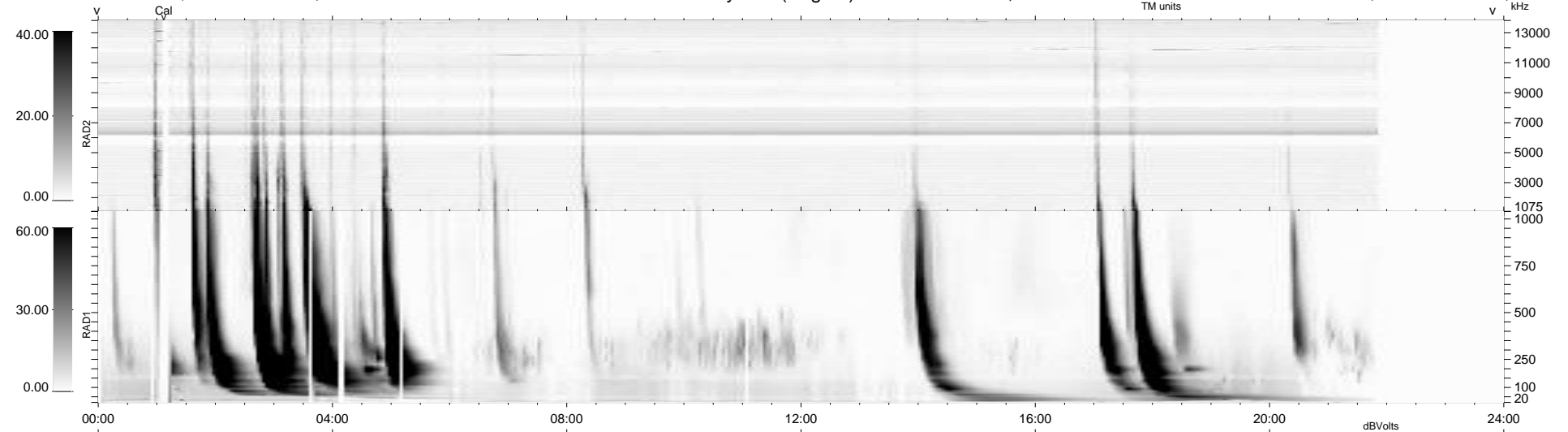
12 bad + 842 good MF/939MF projected (89%) - 85 missing MFs
 Avg interval = 180 secs
 Re = -243.53 (222.94, -97.58, 9.17 GSE)

windlib 2.0b

LZ version = v01

WIND/WAVES Summary Plot (Page 1) for 20-DEC-2011, DOY = 354

DAILY 2011-12-21 21:49:41
 Re = 242.66 (221.85, -97.95, 8.47 GSE)



RAD2
 Antenna Ey
 Mode LIN(1)
 SUM/SEP SEP
 Toggle OFF
 RAD1
 Antenna
 Mode
 SUM/SEP
 Toggle
 TNR
 Antenna ExEy
 Mode A-32
 Sweep ACE