

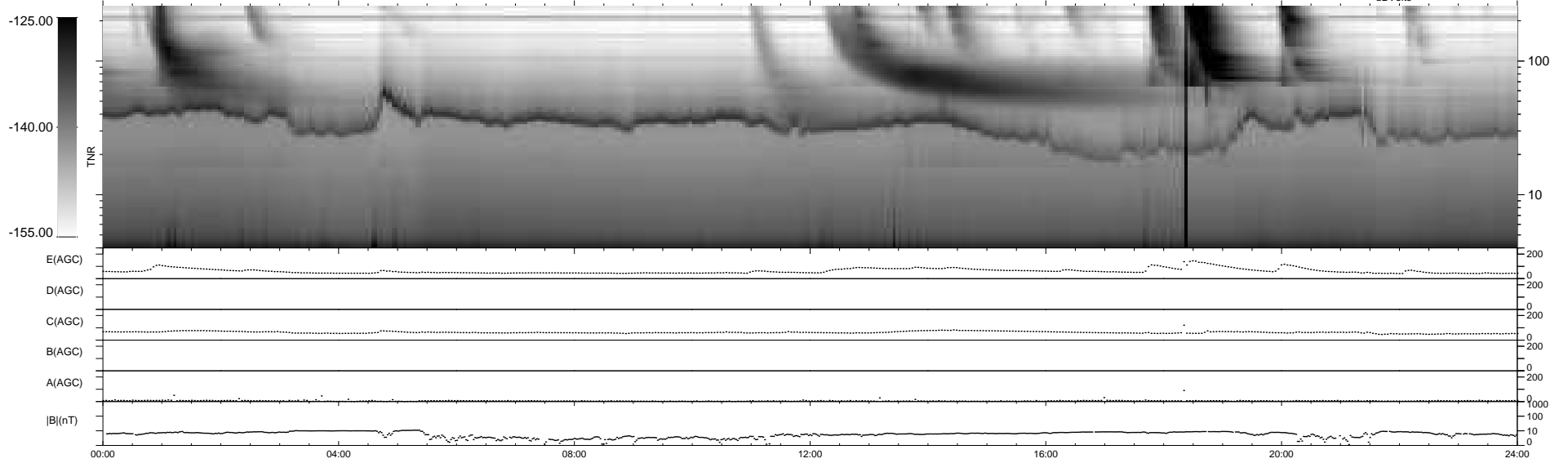
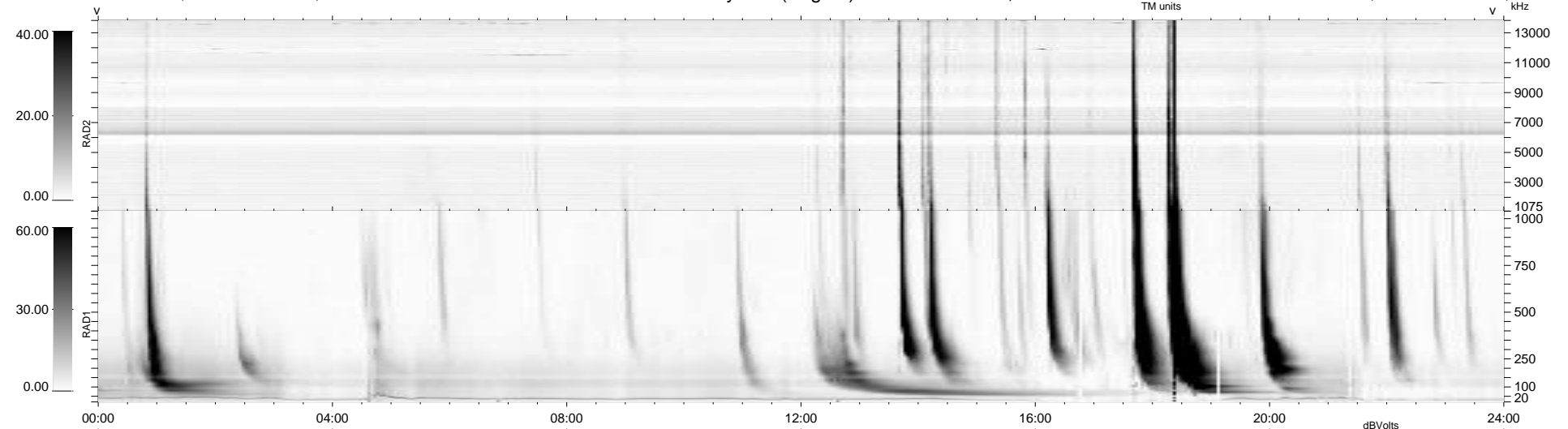
16 bad + 923 good MF/939MF projected (98%) - 0 missing MFs
 Avg interval = 180 secs
 Re = 244.34 (224.02, -97.04, 9.87 GSE)

windlib 2.0b

LZ version = v02

WIND/WAVES Summary Plot (Page 1) for 19-DEC-2011, DOY = 353

DAILY 2012-01-13 18:21:58
 Re = 243.53 (222.95, -97.57, 9.18 GSE)



RAD2
 Antenna Ey
 Mode LIN(1)
 SUM/SEP SEP
 Toggle OFF
 RAD1
 Antenna Ex
 Mode LIS(2,4)
 SUM/SEP SUM
 Toggle OFF
 TNR
 Antenna ExEy
 Mode A-32
 Sweep ACE