

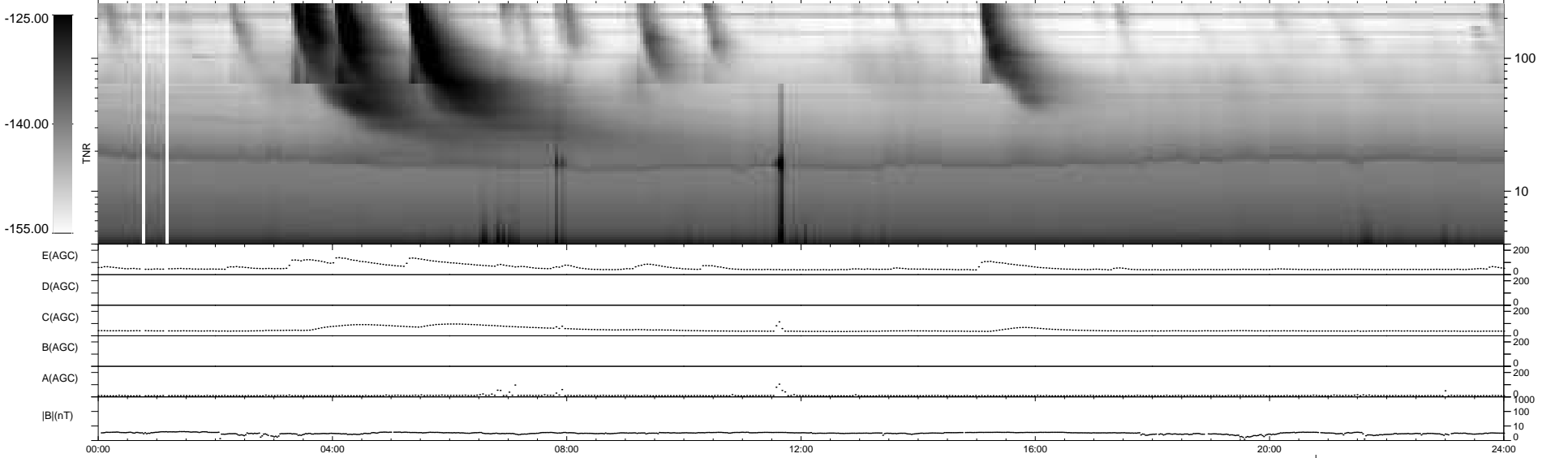
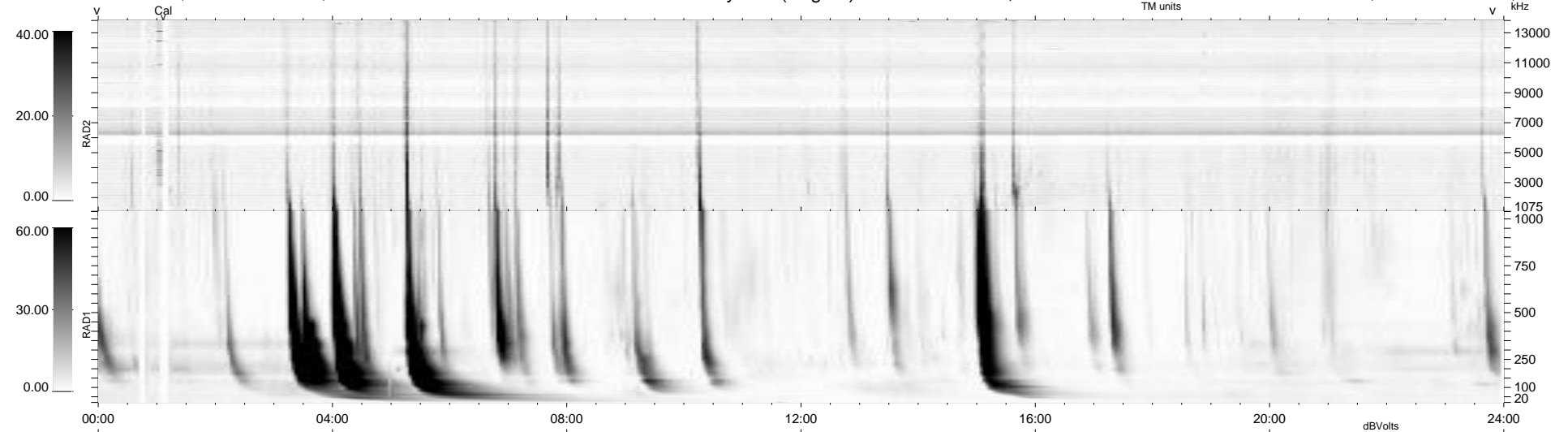
12 bad + 926 good MF/939MF projected (98%) - 1 missing MF
 Avg interval = 180 secs
 Re = 247.72 (229.58, -92.10, 13.23 GSE)

windlib 2.0b

LZ version = v02

WIND/WAVES Summary Plot (Page 1) for 14-DEC-2011, DOY = 348

DAILY 2012-01-13 18:17:18
 Re = 247.11 (228.44, -93.37, 12.58 GSE)



```

RAD2
Antenna Ey .....
Mode LIN(1) .....
SUM/SEP SEP .....
Toggle OFF .....

RAD1
Antenna Ex .....
Mode LIS(2,4) .....
SUM/SEP SUM .....
Toggle OFF .....

TNR
Antenna ExEy .....
Mode A-32 .....
Sweep ACE .....
  
```