

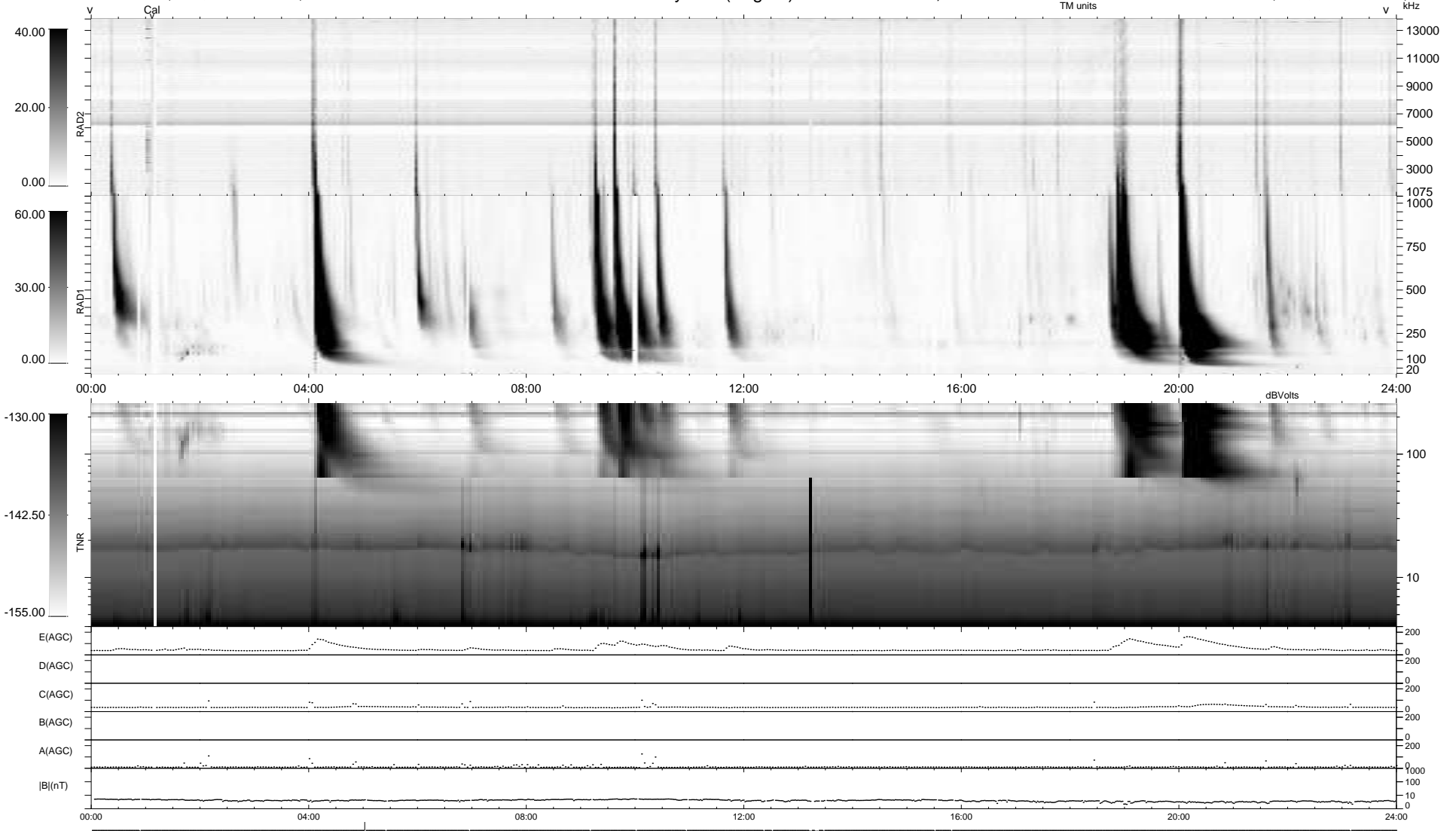
17 bad + 921 good MF/939MF projected (98%) - 1 missing MF
 Avg interval = 180 secs
 Re = 248.90 (231.94, -89.14, 14.49 GSE)

windlib 2.0b

LZ version = v01

WIND/WAVES Summary Plot (Page 1) for 12-DEC-2011, DOY = 346

DAILY 2012-01-13 18:15:25
 Re = 248.32 (230.76, -90.67, 13.87 GSE)



```

RAD2
Antenna Ey .....
Mode LIN(1) .....
SUM/SEP SEP .....
Toggle OFF .....

RAD1
Antenna Ex .....
Mode LIS(2,4) .....
SUM/SEP SUM .....
Toggle OFF .....

TNR
Antenna ExEy .....
Mode A-32 .....
Sweep ACE .....
  
```