

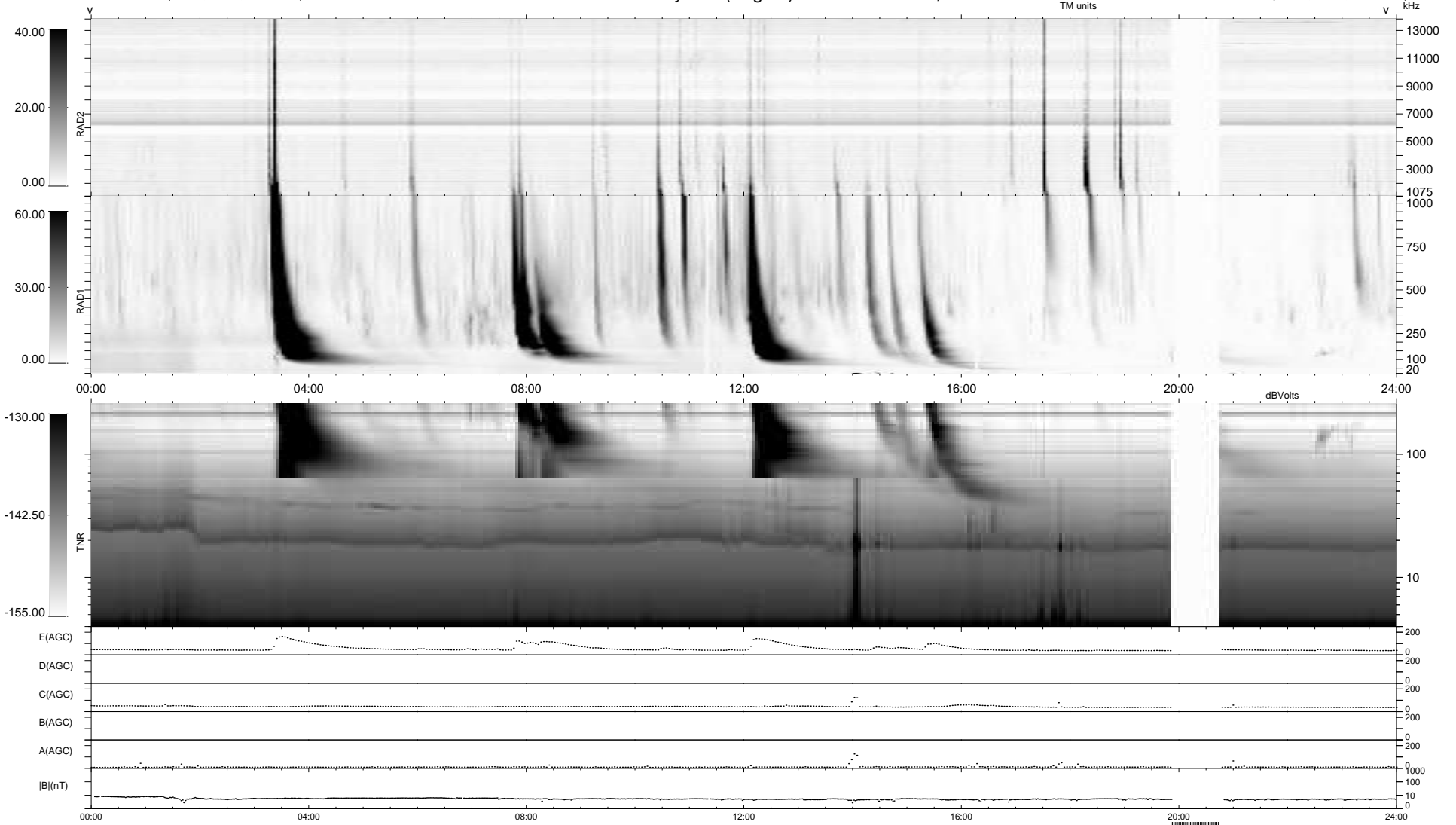
10 bad + 894 good MF/939MF projected (95%) - 35 missing MFs
 Avg interval = 180 secs
 Re = 249.48 (233.15, -87.47, 15.10 GSE)

windlib 2.0b

LZ version = v02

WIND/WAVES Summary Plot (Page 1) for 11-DEC-2011, DOY = 345

DAILY 2012-01-13 18:14:30
 Re = 248.90 (231.95, -89.12, 14.50 GSE)



```

RAD2
Antenna Ey .....
Mode LIN(1) .....
SUM/SEP SEP .....
Toggle OFF .....

RAD1
Antenna Ex .....
Mode LIS(2,4) .....
SUM/SEP SUM .....
Toggle OFF .....

TNR
Antenna ExEy .....
Mode A-32 .....
Sweep ACE .....
  
```