

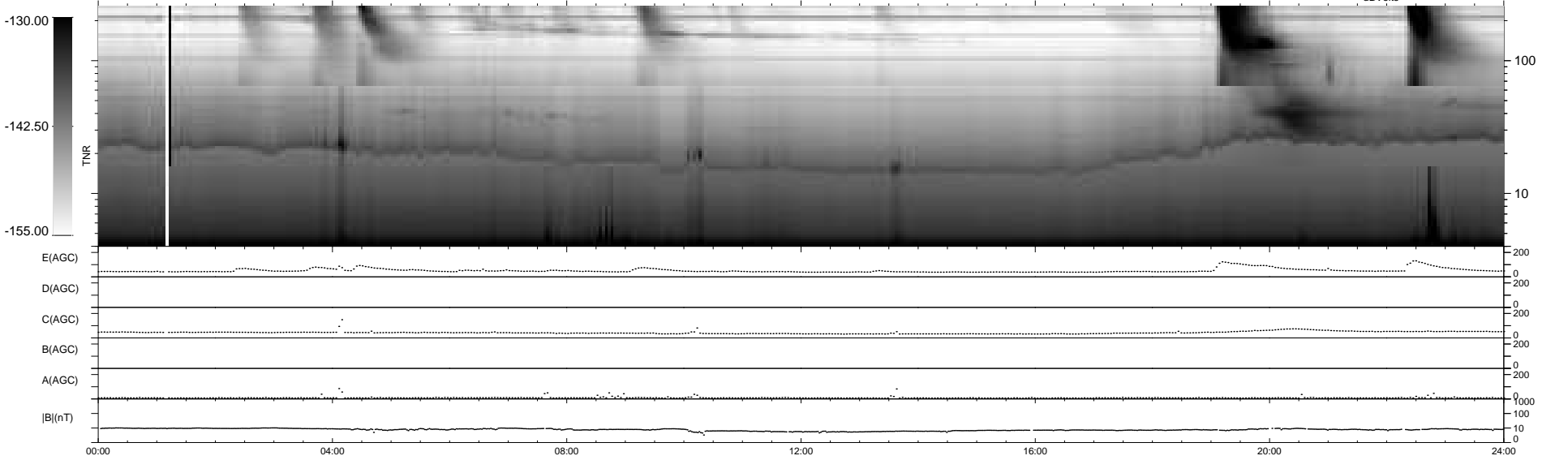
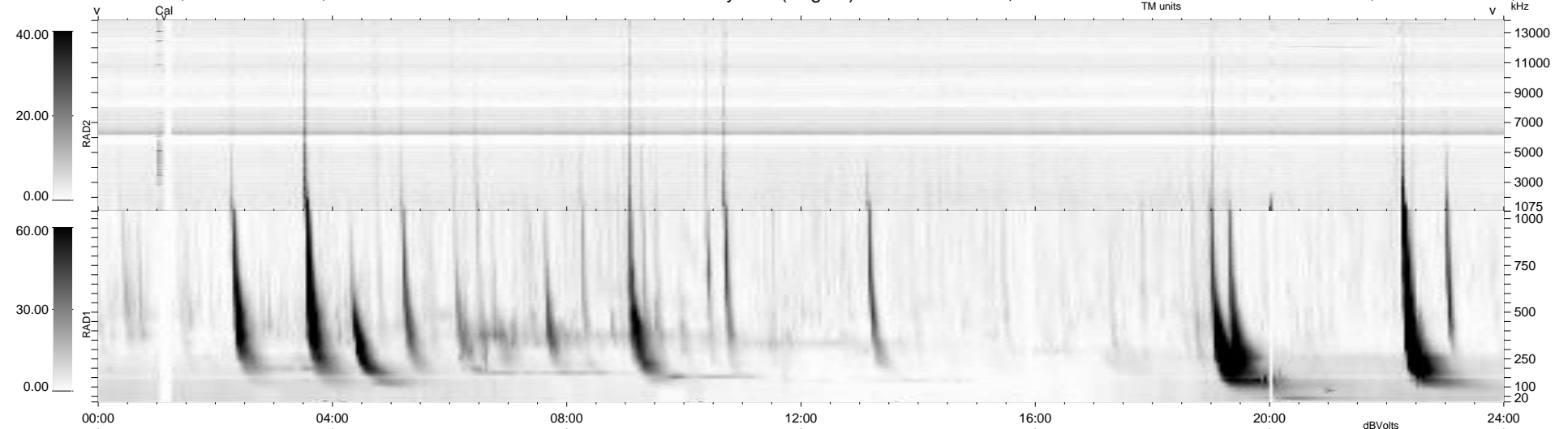
14 bad + 926 good MF/940MF projected (98%) - 0 missing MFs  
 Avg interval = 180 secs  
 Re = 250.06 (234.39, -85.70, 15.70 GSE)

windlib 2.0b

LZ version = v01

### WIND/WAVES Summary Plot (Page 1) for 10-DEC-2011, DOY = 344

DAILY 2012-01-13 18:13:34  
 Re = 249.48 (233.16, -87.46, 15.11 GSE)



```

RAD2
Antenna Ey .....
Mode LIN(1) .....
SUM/SEP SEP .....
Toggle OFF .....

RAD1
Antenna Ex .....
Mode LIS(2,4) .....
SUM/SEP SUM .....
Toggle OFF .....

TNR
Antenna ExEy .....
Mode A-32 .....
Sweep ACE .....
  
```