

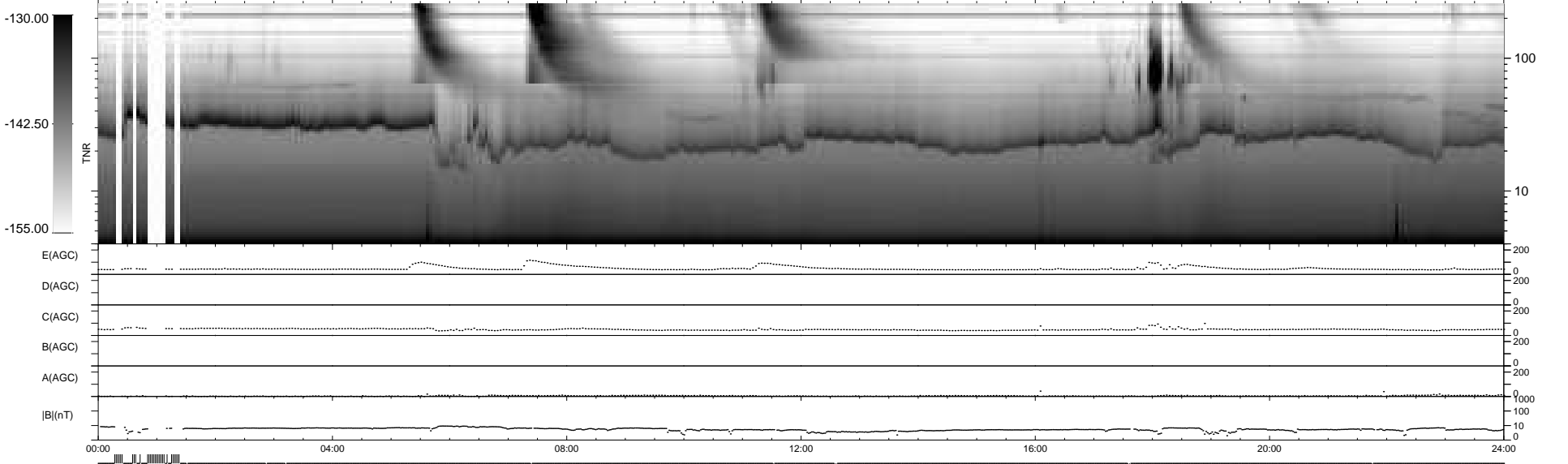
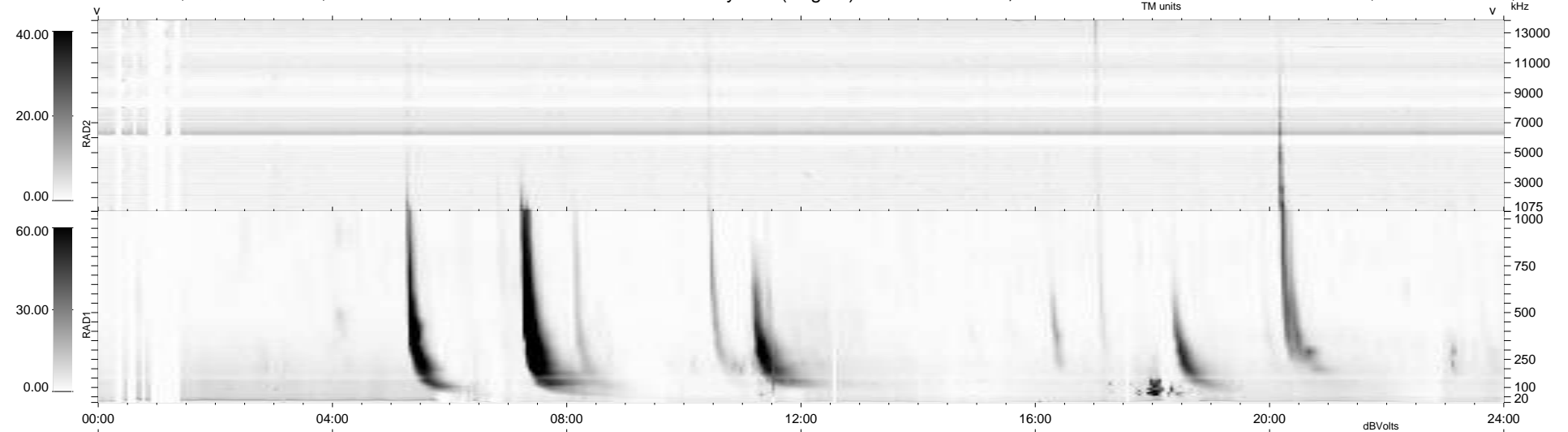
10 bad + 901 good MF/940MF projected (95%) - 29 missing MFs
 Avg interval = 180 secs
 Re = 254.10 (243.27, -70.82, 19.35 GSE)

windlib 2.0b

LZ version = v02

WIND/WAVES Summary Plot (Page 1) for 03-DEC-2011, DOY = 337

DAILY 2012-01-13 18:07:02
 Re = 253.54 (242.02, -73.14, 18.90 GSE)



```

RAD2
Antenna Ey .....
Mode LIN(1) .....
SUM/SEP SEP .....
Toggle OFF .....

RAD1
Antenna Ex .....
Mode LIS(2,4) .....
SUM/SEP SUM .....
Toggle OFF .....

TNR
Antenna ExEy .....
Mode A-32 .....
Sweep ACE .....
  
```