

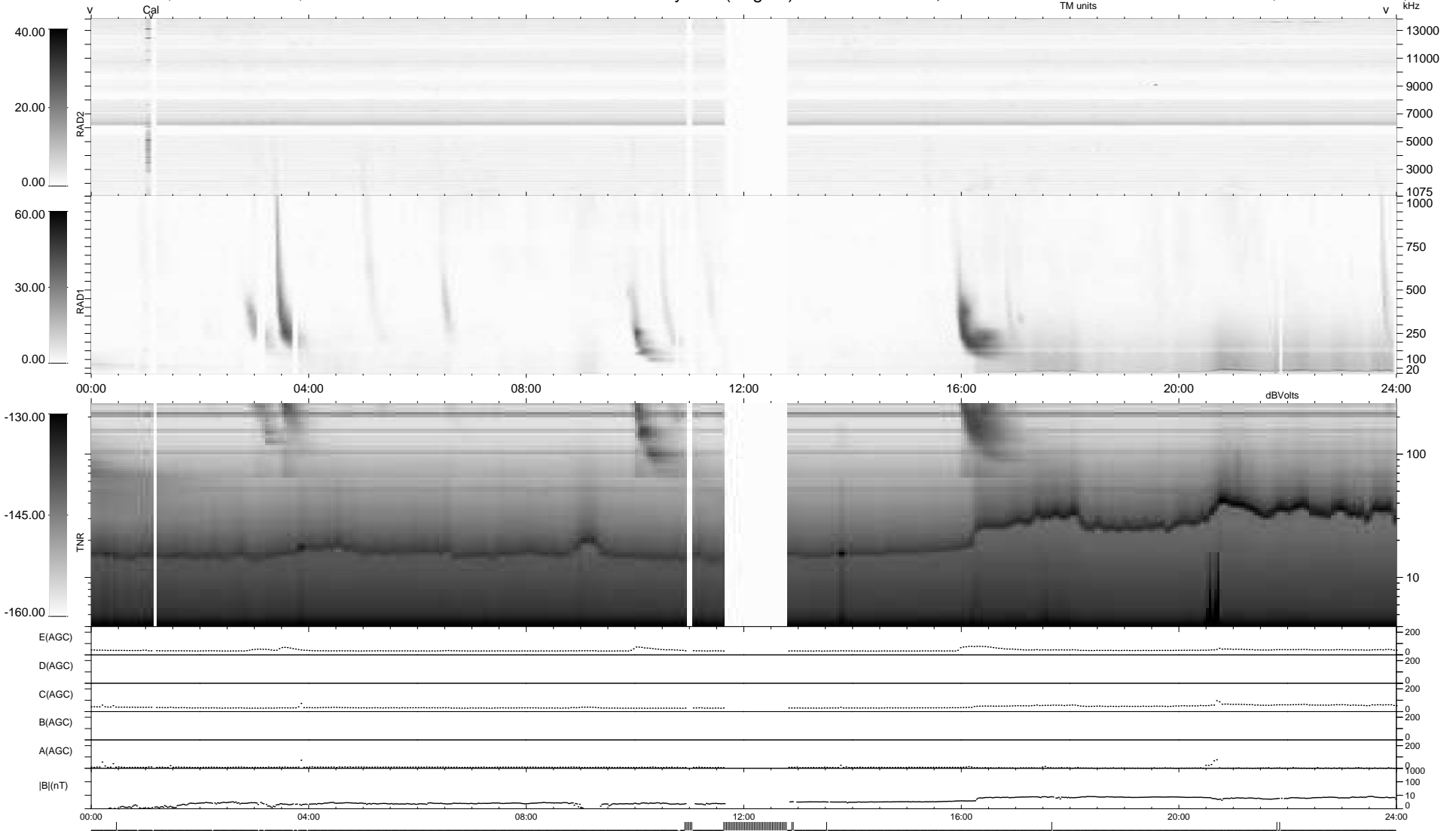
10 bad + 870 good MF/939MF projected (92%) - 59 missing MFs
 Avg interval = 180 secs
 Re = 254.66 (244.50, -68.41, 19.79 GSE)

windlib 2.0b

LZ version = v01

WIND/WAVES Summary Plot (Page 1) for 02-DEC-2011, DOY = 336

DAILY 2012-01-13 18:06:08
 Re = 254.11 (243.28, -70.80, 19.36 GSE)



RAD2
 Antenna Ey
 Mode LIN(1)
 SUM/SEP SEP
 Toggle OFF
 RAD1
 Antenna Ex
 Mode LIS(2,4)
 SUM/SEP SUM
 Toggle OFF
 TNR
 Antenna ExEy
 Mode A-32
 Sweep ACE