

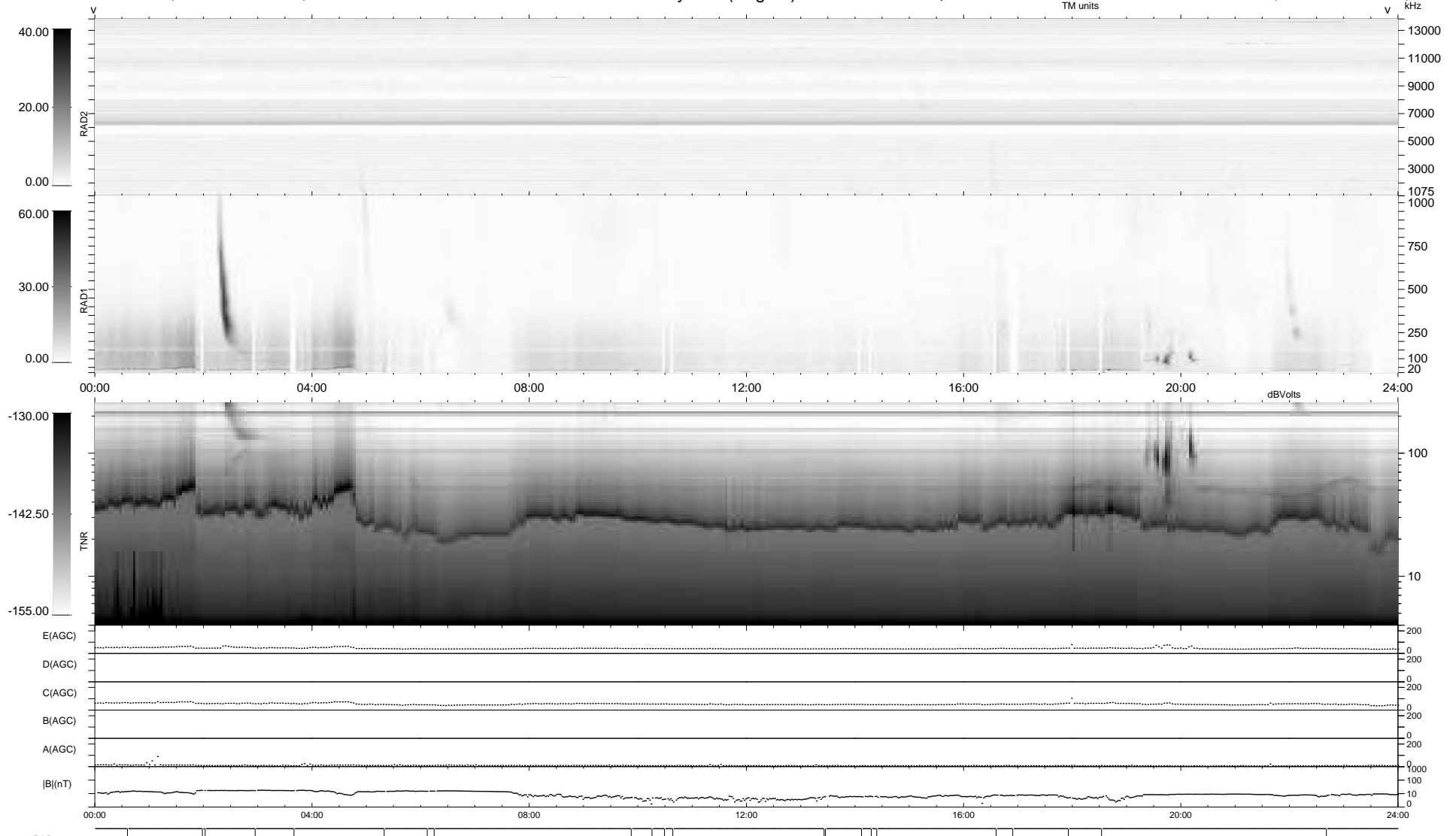
22 bad + 917 good MF/939MF projected (97%) - 0 missing MFs
 Avg interval = 180 secs
 Re = 256.20 (247.97, -60.89, 20.95 GSE)

windlib 2.0b

LZ version = v01

WIND/WAVES Summary Plot (Page 1) for 29-NOV-2011, DOY = 333

DAILY 2012-01-09 16:30:17
 Re = 255.72 (246.87, -63.43, 20.59 GSE)



```

RAD2
Antenna Ey .....
Mode LIN(1) .....
SUM/SEP SEP .....
Toggle OFF .....

RAD1
Antenna Ex .....
Mode LIS(2,4) .....
SUM/SEP SUM .....
Toggle OFF .....

TNR
Antenna ExEy .....
Mode A-32 .....
Sweep ACE .....
  
```