

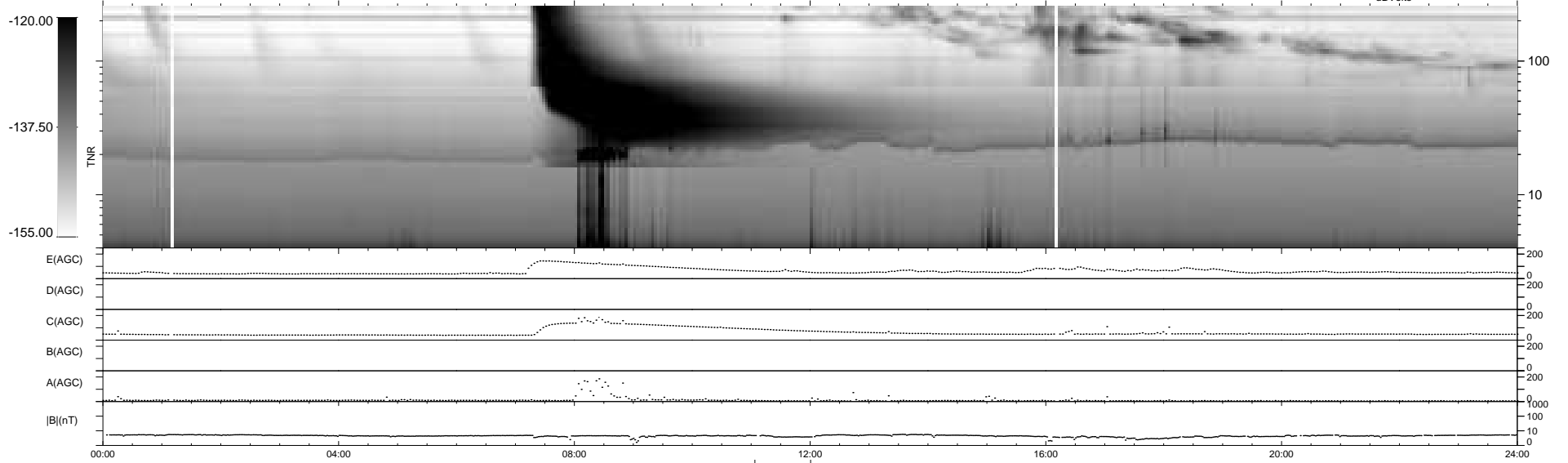
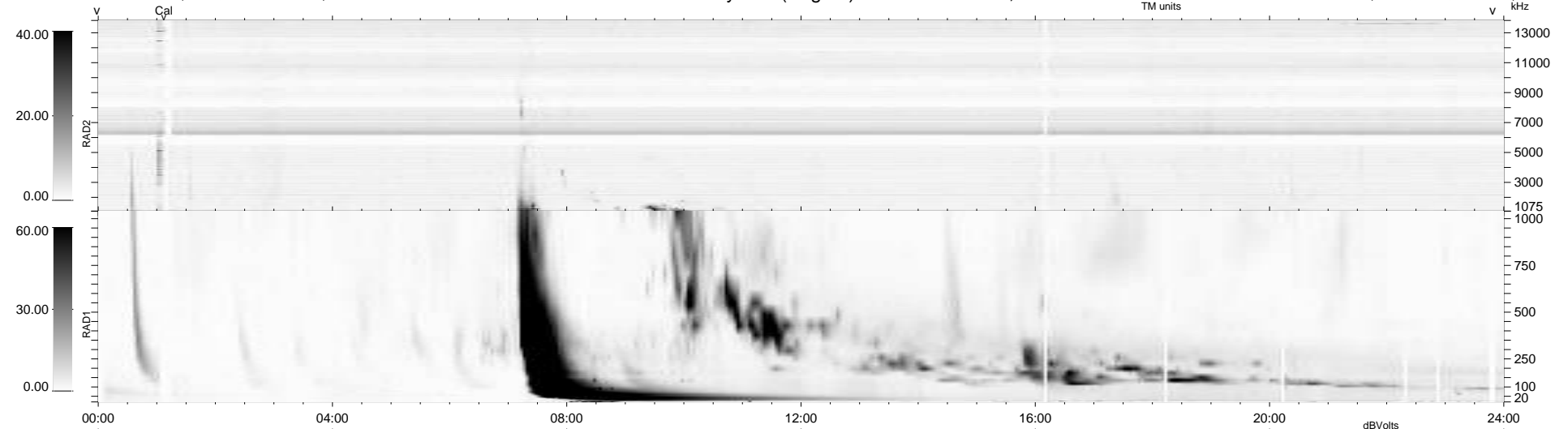
17 bad + 920 good MF/939MF projected (97%) - 2 missing MFs
 Avg interval = 180 secs
 Re = 257.40 (250.95, -52.91, 21.90 GSE)

windlib 2.0b

LZ version = v02

WIND/WAVES Summary Plot (Page 1) for 26-NOV-2011, DOY = 330

DAILY 2012-01-09 16:27:29
 Re = 257.05 (250.03, -55.61, 21.61 GSE)



RAD2
 Antenna Ey
 Mode LIN(1)
 SUM/SEP SEP
 Toggle OFF
 RAD1
 Antenna
 Mode
 SUM/SEP
 Toggle
 TNR
 Antenna ExEy
 Mode A-32
 Sweep ACE