

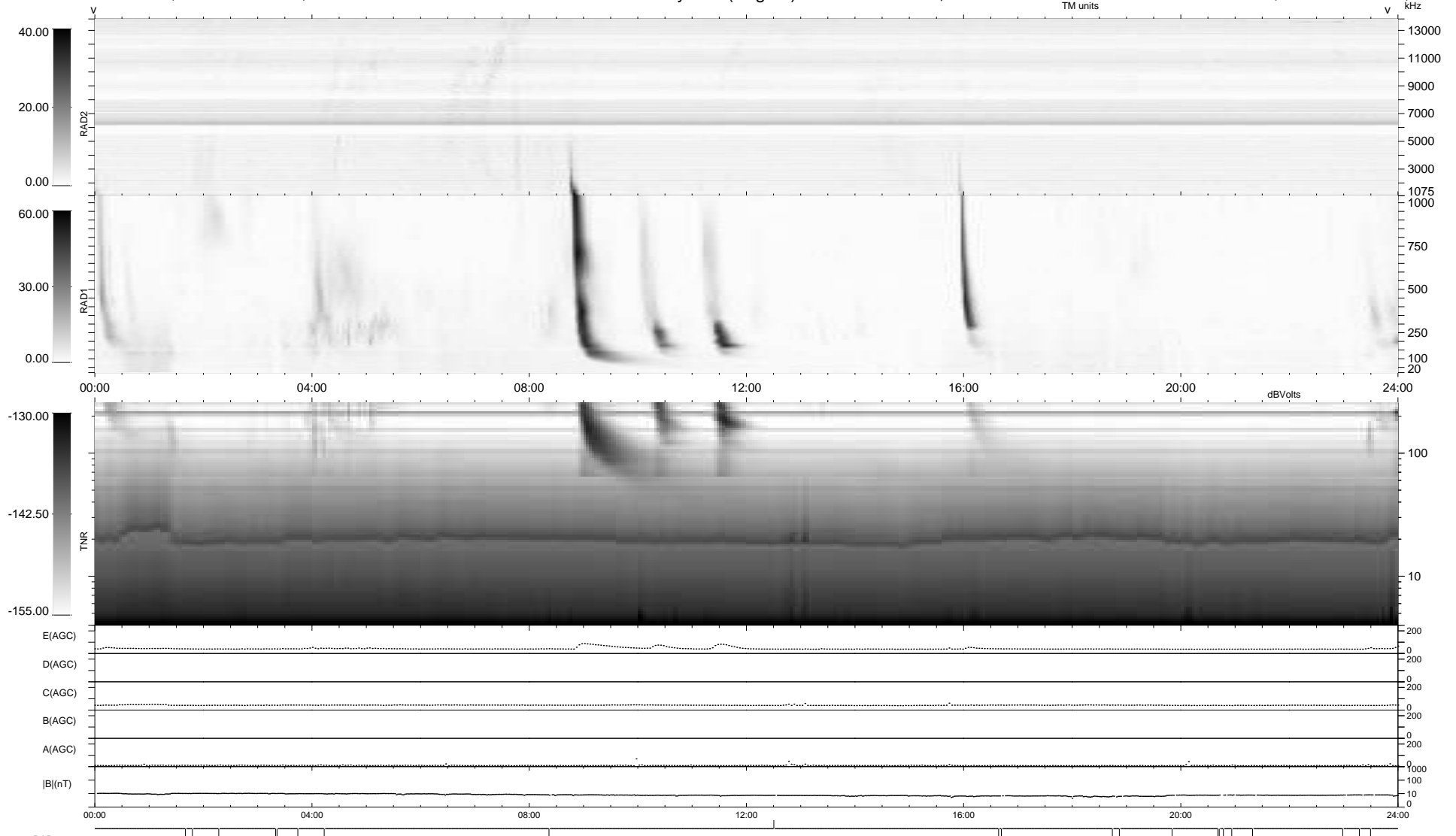
21 bad + 917 good MF/939MF projected (97%) - 1 missing MF
 Avg interval = 180 secs
 Re = 258.11 (253.25, -44.40, 22.66 GSE)

windlib 2.0b

LZ version = v01

WIND/WAVES Summary Plot (Page 1) for 23-NOV-2011, DOY = 327

DAILY 2012-01-09 16:24:41
 Re = 257.93 (252.57, -47.28, 22.43 GSE)



```

RAD2
Antenna Ey .....
Mode LIN(1) .....
SUM/SEP SEP .....
Toggle OFF .....

RAD1
Antenna Ex .....
Mode LIS(2,4) .....
SUM/SEP SUM .....
Toggle OFF .....

TNR
Antenna ExEy .....
Mode A-32 .....
Sweep ACE .....
  
```