

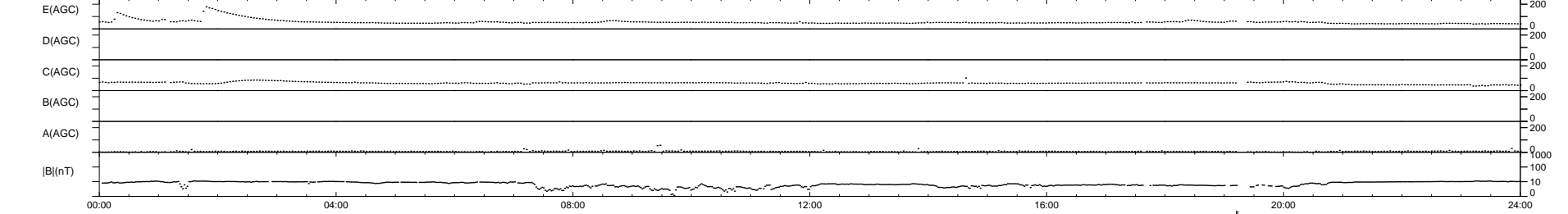
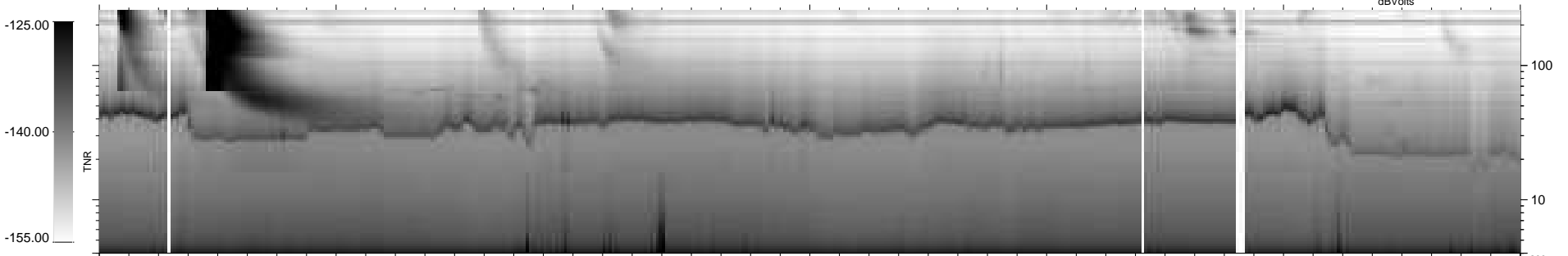
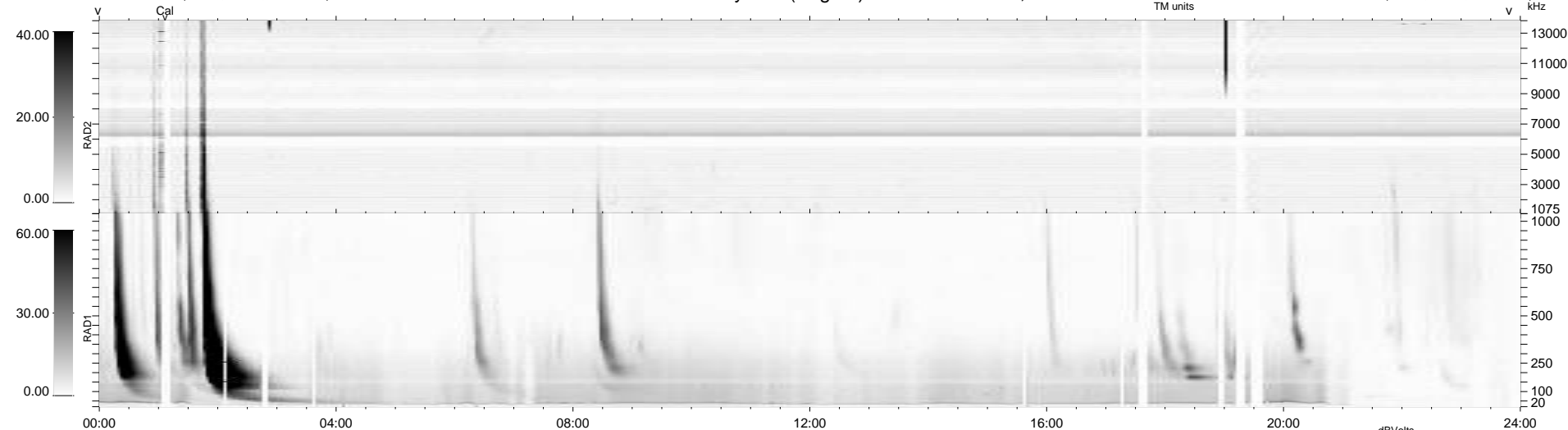
37 bad + 900 good MF/939MF projected (95%) - 2 missing MFs
 Avg interval = 180 secs
 Re = 258.23 (253.86, -41.42, 22.87 GSE)

windlib 2.0b

LZ version = v02

WIND/WAVES Summary Plot (Page 1) for 22-NOV-2011, DOY = 326

DAILY 2012-01-09 16:23:47
 Re = 258.11 (253.25, -44.38, 22.66 GSE)



```

RAD2
Antenna Ey .....
Mode LIN(1) .....
SUM/SEP SEP .....
Toggle OFF .....

RAD1
Antenna Ex .....
Mode LIS(2,4) .....
SUM/SEP SUM .....
Toggle OFF .....

TNR
Antenna ExEy .....
Mode A-32 .....
Sweep ACE .....
  
```