

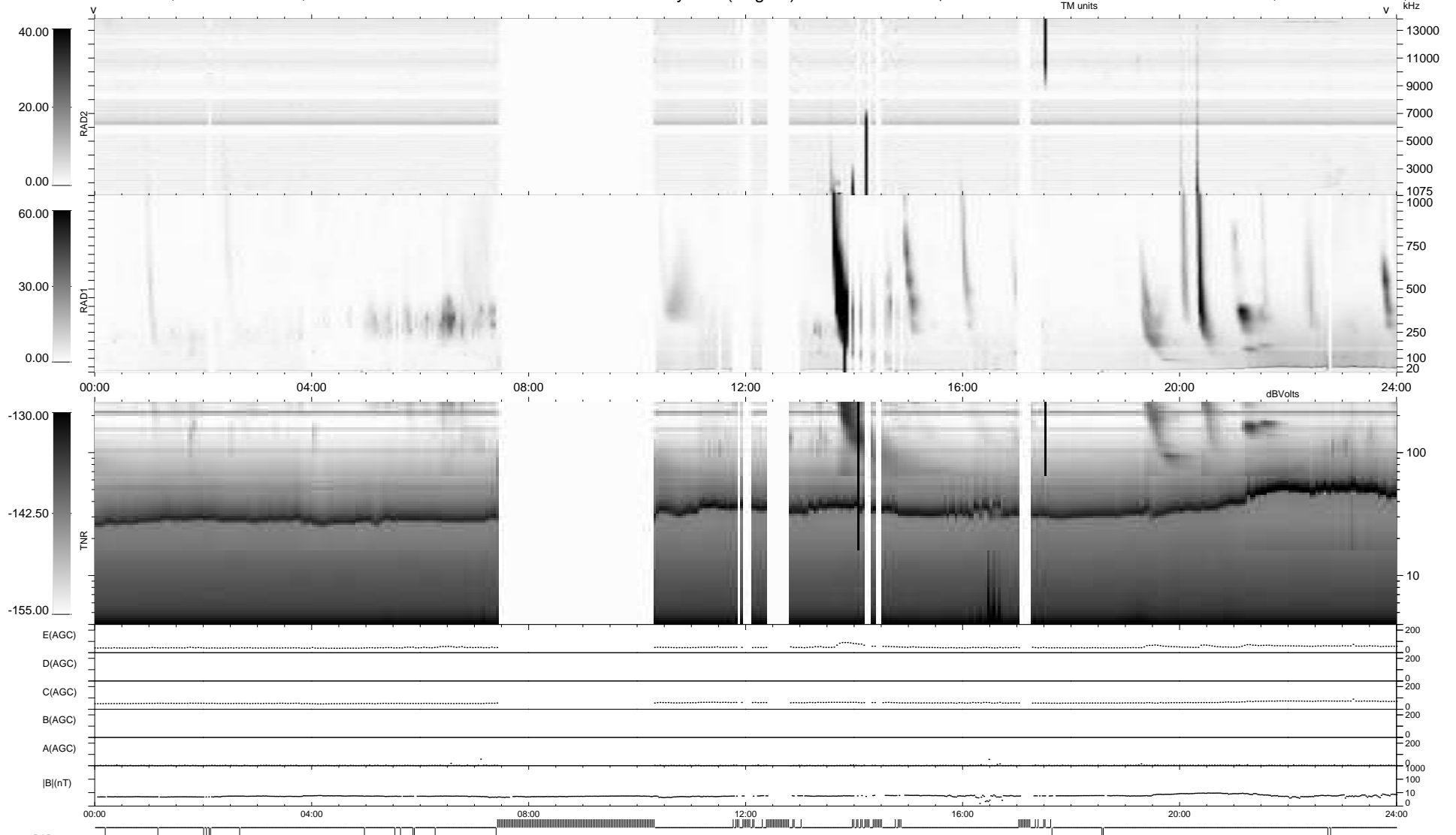
19 bad + 738 good MF/939MF projected (78%) - 182 missing MFs
 Avg interval = 180 secs
 Re = 258.27 (254.36, -38.36, 23.06 GSE)

windlib 2.0b

LZ version = v03

WIND/WAVES Summary Plot (Page 1) for 21-NOV-2011, DOY = 325

DAILY 2011-11-28 19:04:06
 Re = 258.19 (253.82, -41.39, 22.87 GSE)



```

RAD2
Antenna  Ey
Mode     LIN(1)
SUM/SEP  SEP
Toggle   OFF

RAD1
Antenna  Ex
Mode     LIS(2,4)
SUM/SEP  SUM
Toggle   OFF

TNR
Antenna  ExEy
Mode     A-32
Sweep    ACE
  
```