

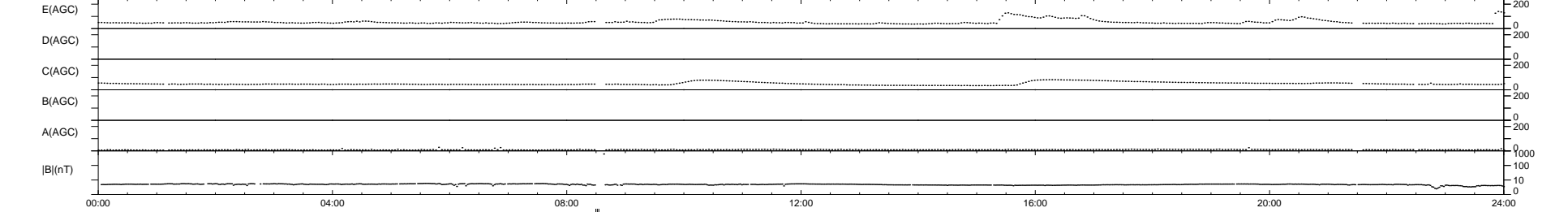
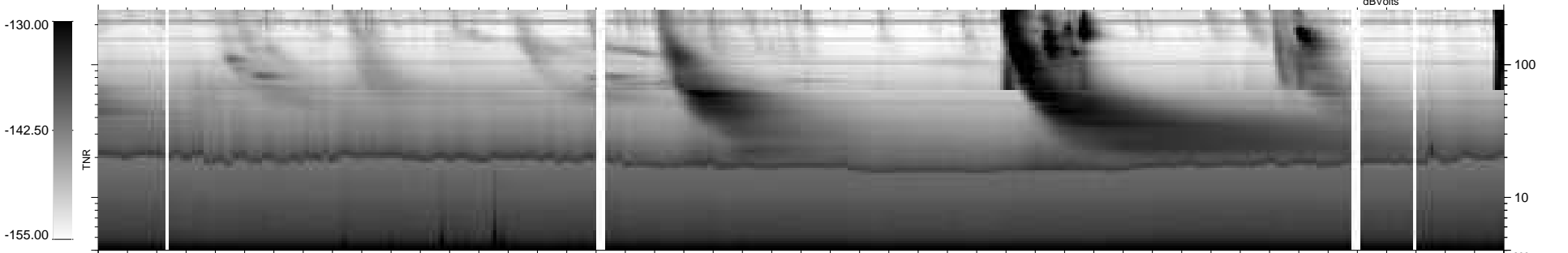
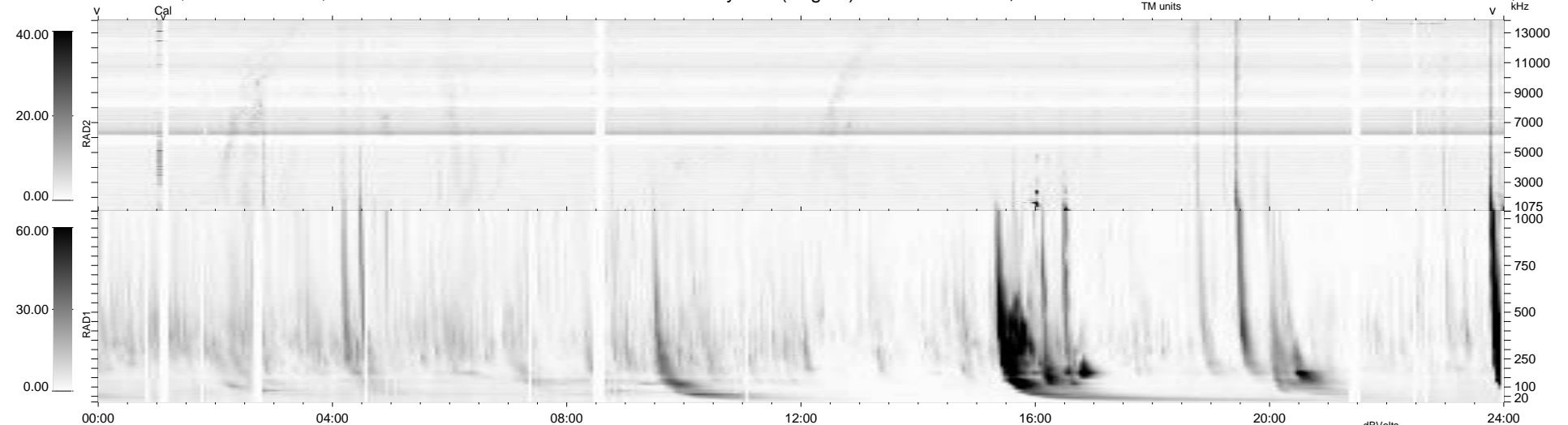
35 bad + 901 good MF/939MF projected (95%) - 3 missing MFs
 Avg interval = 180 secs
 Re = 258.23 (256.69, -14.99, 23.84 GSE)

windlib 2.0b

LZ version = v01

WIND/WAVES Summary Plot (Page 1) for 14-NOV-2011, DOY = 318

DAILY 2012-01-09 16:16:21
 Re = 258.25 (256.48, -18.48, 23.79 GSE)



RAD2
 Antenna Ey
 Mode LIN(1)
 SUM/SEP SEP
 Toggle OFF

RAD1
 Antenna Ex
 Mode LIS(2,4)
 SUM/SEP SUM
 Toggle OFF

TNR
 Antenna ExEy
 Mode A-32
 Sweep ACE