

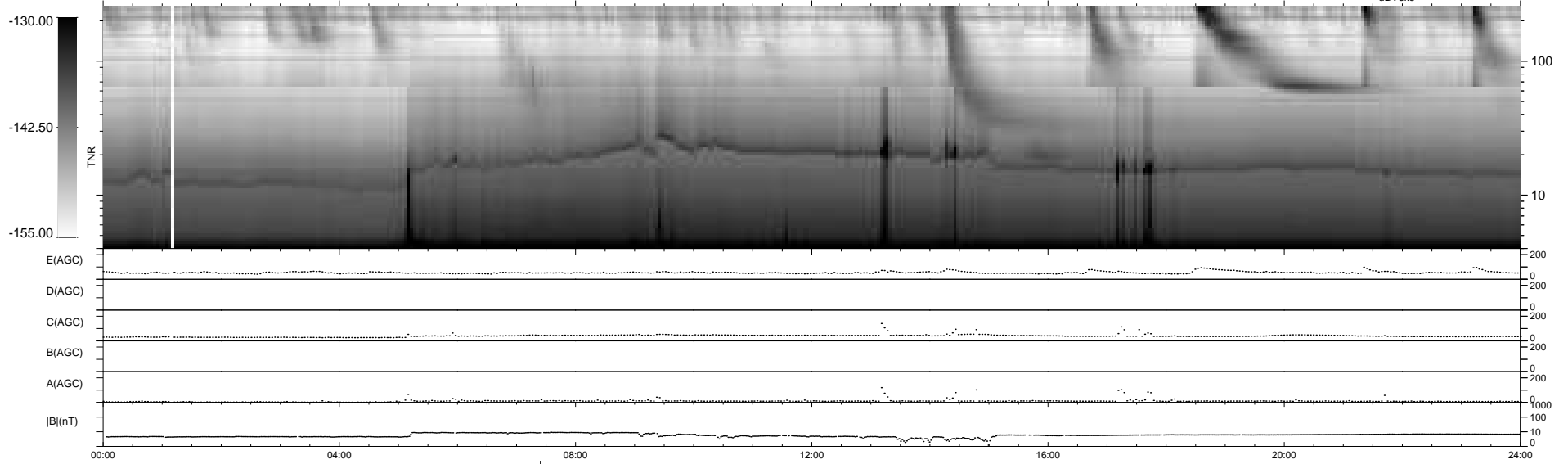
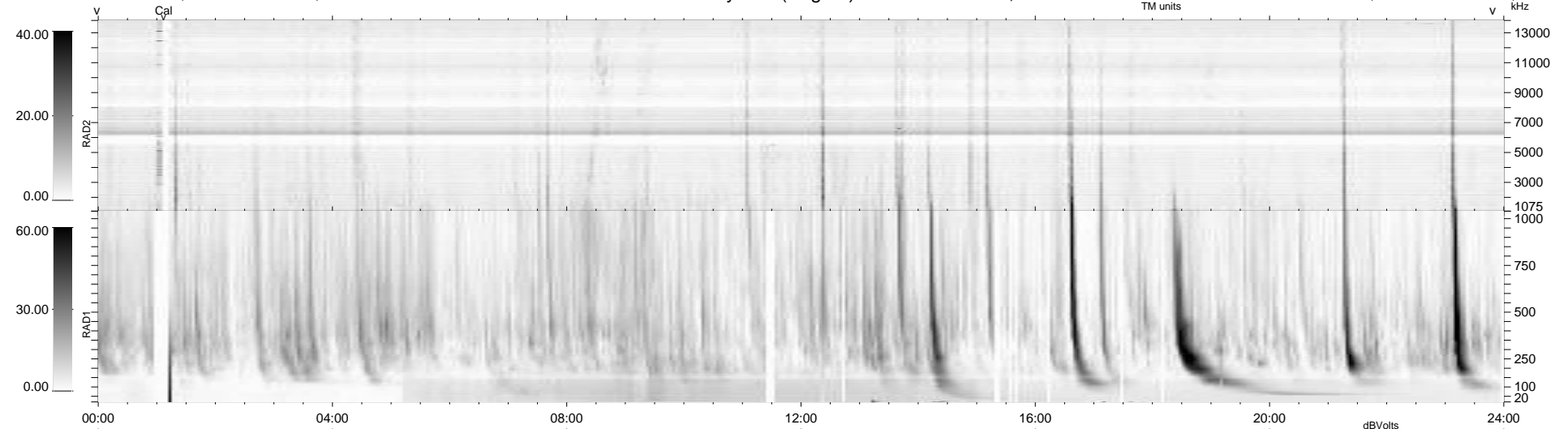
20 bad + 918 good MF/939MF projected (97%) - 1 missing MF  
 Avg interval = 180 secs  
 Re = 258.26 (257.03, -7.87, 23.87 GSE)

windlib 2.0b

LZ version = v01

### WIND/WAVES Summary Plot (Page 1) for 12-NOV-2011, DOY = 316

DAILY 2012-01-09 16:14:28  
 Re = 258.23 (256.88, -11.42, 23.87 GSE)



```

RAD2
Antenna Ey .....
Mode LIN(1) .....
SUM/SEP SEP .....
Toggle OFF .....

RAD1
Antenna Ex .....
Mode LIS(2,4) .....
SUM/SEP SUM .....
Toggle OFF .....

TNR
Antenna ExEy .....
Mode A-32 .....
Sweep ACE .....
  
```