

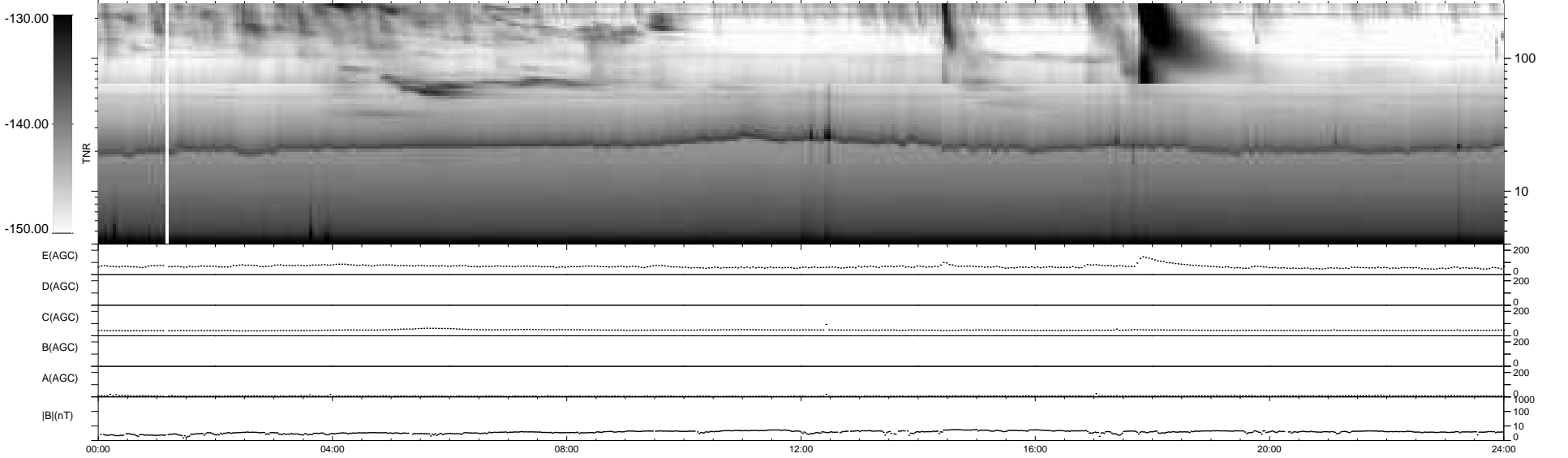
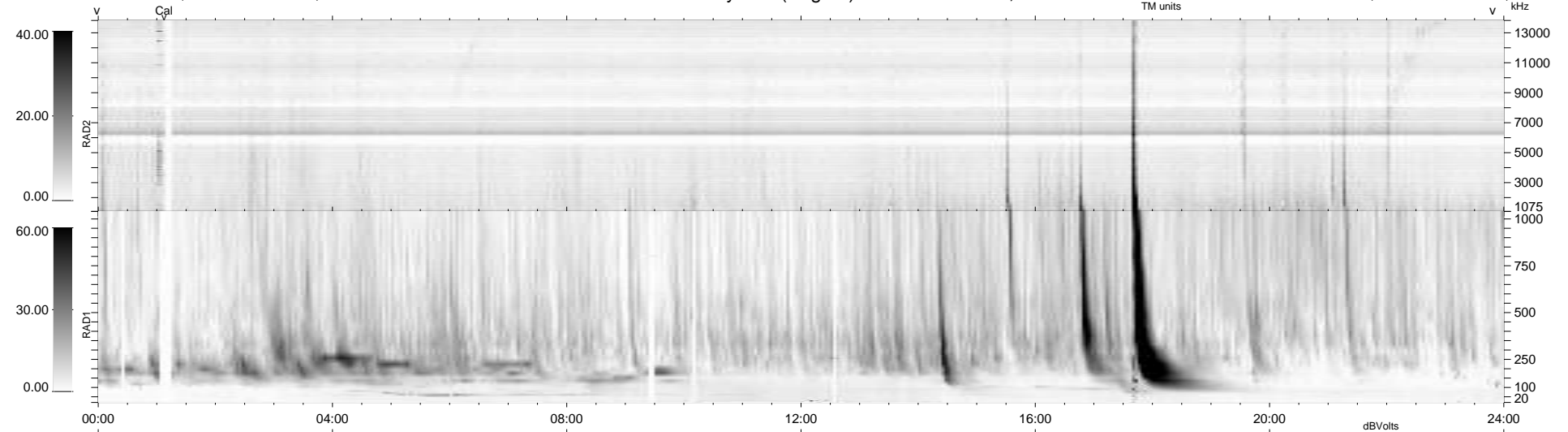
14 bad + 926 good MF/940MF projected (98%) - 0 missing MFs
 Avg interval = 180 secs
 Re = 258.37 (257.27, -0.69, 23.80 GSE)

windlib 2.0b

LZ version = v01

WIND/WAVES Summary Plot (Page 1) for 10-NOV-2011, DOY = 314

DAILY 2012-01-09 16:12:36
 Re = 258.30 (257.16, -4.26, 23.85 GSE)



RAD2	
Antenna	Ey
Mode	LIN(1)
SUM/SEP	SEP
Toggle	OFF
RAD1	
Antenna	Ex
Mode	LIS(2,4)
SUM/SEP	SUM
Toggle	OFF
TNR	
Antenna	ExEy
Mode	A-32
Sweep	ACE