

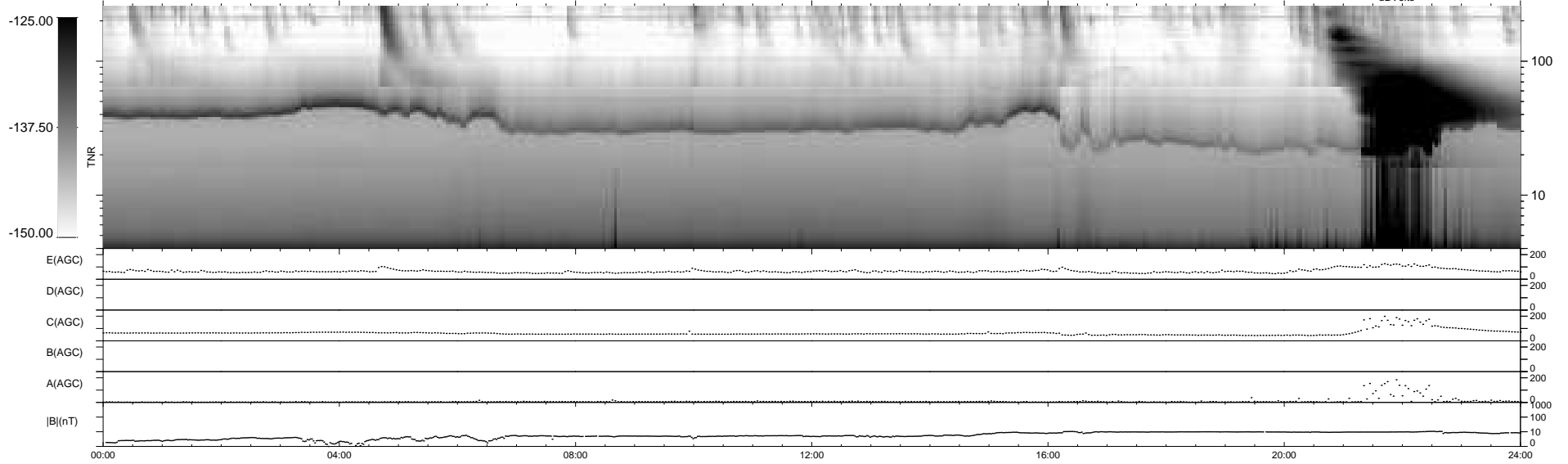
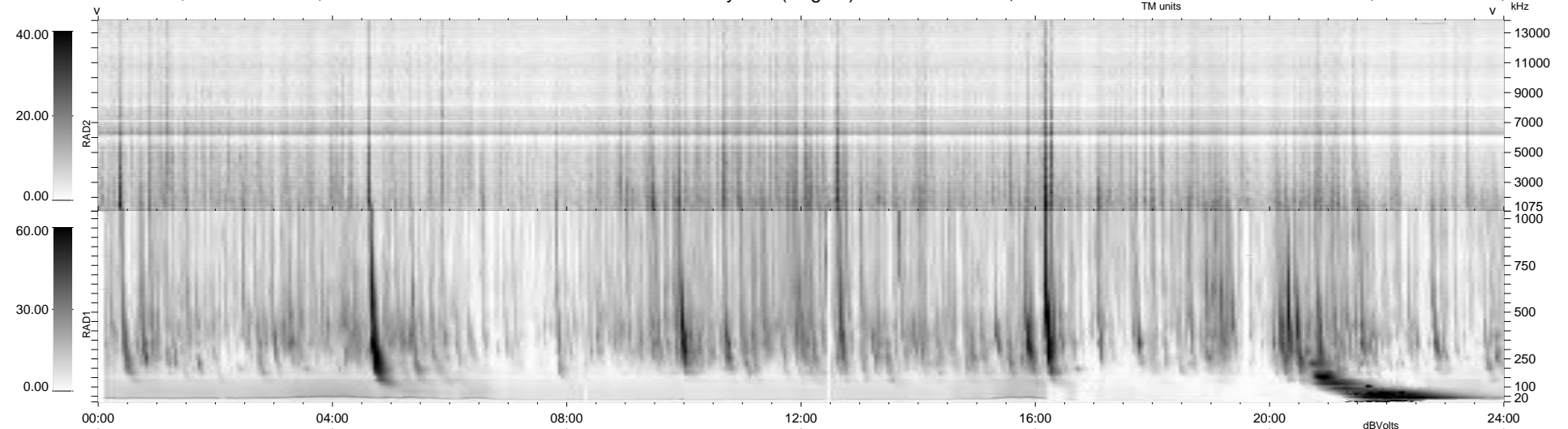
10 bad + 929 good MF/939MF projected (98%) - 0 missing MFs  
 Avg interval = 180 secs  
 Re = 258.70 (257.43, 10.03, 23.51 GSE)

windlib 2.0b

LZ version = v01

### WIND/WAVES Summary Plot (Page 1) for 07-NOV-2011, DOY = 311

DAILY 2012-01-09 16:09:40  
 Re = 258.57 (257.41, 6.50, 23.63 GSE)



RAD2  
 Antenna Ey  
 Mode LIN(1)  
 SUM/SEP SEP  
 Toggle OFF

RAD1  
 Antenna  
 Mode  
 SUM/SEP  
 Toggle

TNR  
 Antenna ExEy  
 Mode A-32  
 Sweep ACE