

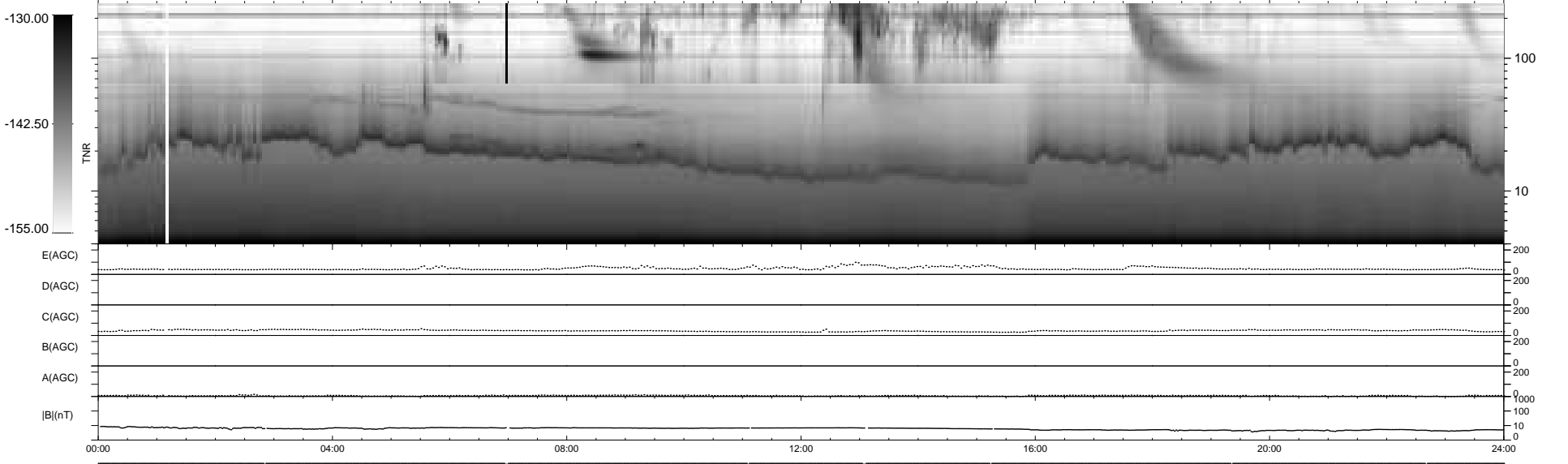
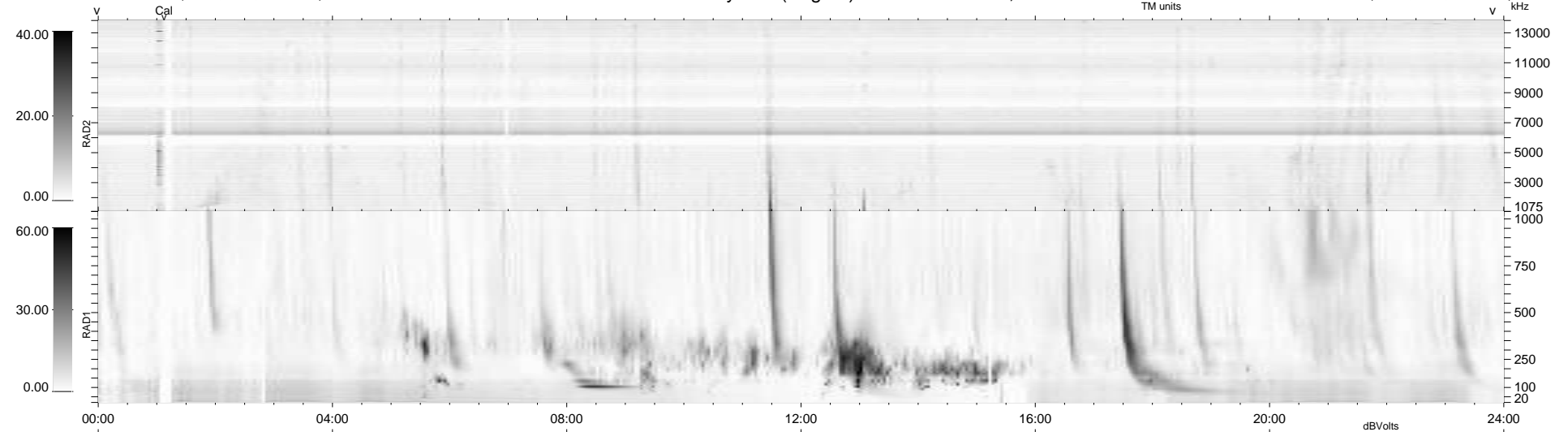
9 bad + 931 good MF/940MF projected (99%) - 0 missing MFs
 Avg interval = 180 secs
 Re = 259.43 (257.02, 27.17, 22.51 GSE)

windlib 2.0b

LZ version = v01

WIND/WAVES Summary Plot (Page 1) for 02-NOV-2011, DOY = 306

DAILY 2012-01-09 16:04:59
 Re = 259.29 (257.19, 23.87, 22.76 GSE)



RAD2
 Antenna Ey
 Mode LIN(1)
 SUM/SEP SEP
 Toggle OFF

RAD1
 Antenna Ex
 Mode LIS(2,4)
 SUM/SEP SUM
 Toggle OFF

TNR
 Antenna ExEy
 Mode A-32
 Sweep ACE