

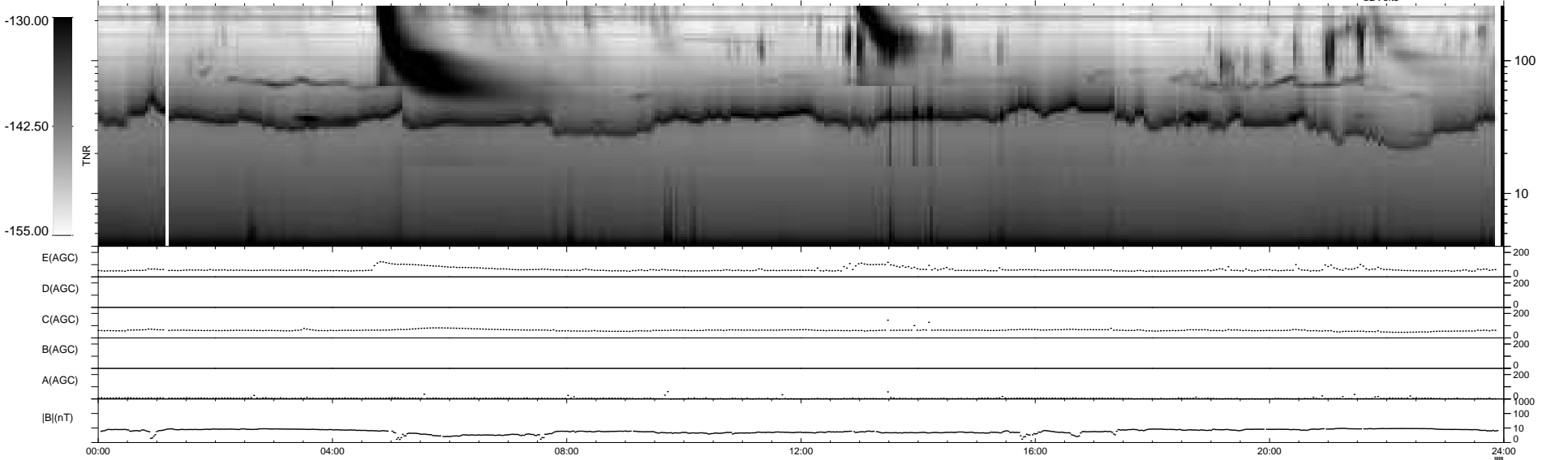
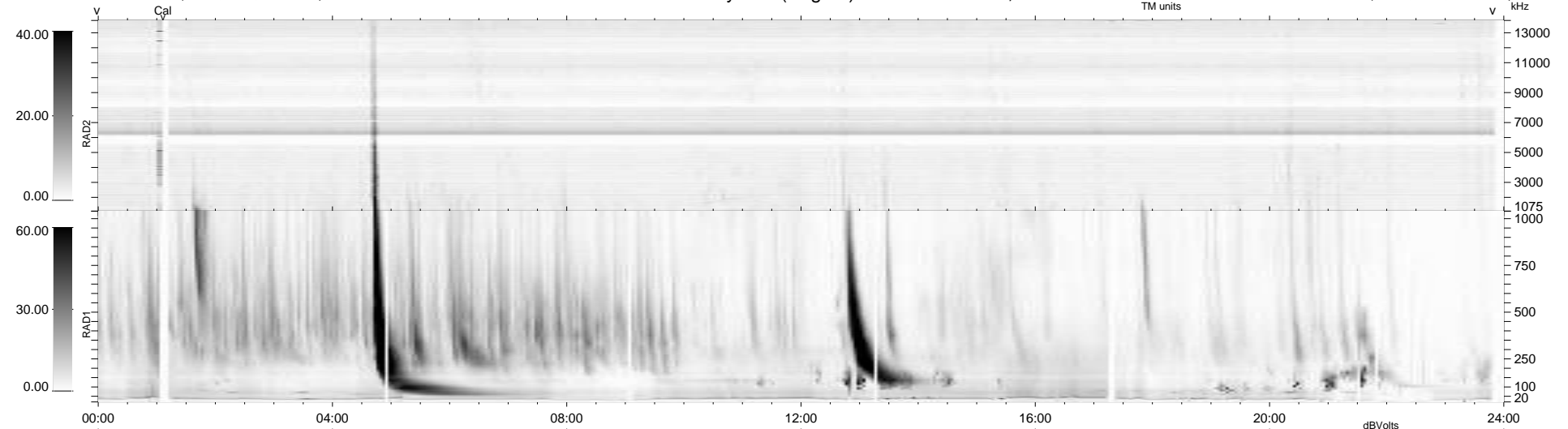
19 bad + 914 good MF/939MF projected (97%) - 6 missing MFs
 Avg interval = 180 secs
 Re = 259.62 (256.50, 33.62, 21.93 GSE)

windlib 2.0b

LZ version = v01

WIND/WAVES Summary Plot (Page 1) for 31-OCT-2011, DOY = 304

DAILY 2011-11-02 01:02:07
 Re = 259.54 (256.79, 30.45, 22.23 GSE)



E(AGC) 200
 D(AGC) 200
 C(AGC) 200
 B(AGC) 200
 A(AGC) 200
 |B|(nT) 1000
 100
 10
 0

00:00 04:00 08:00 12:00 16:00 20:00 24:00

RAD2
 Antenna Ey
 Mode LIN(1)
 SUM/SEP SEP
 Toggle OFF

RAD1
 Antenna Ex
 Mode LIS(2,4)
 SUM/SEP SUM
 Toggle OFF

TNR
 Antenna ExEy
 Mode A-32
 Sweep ACE