

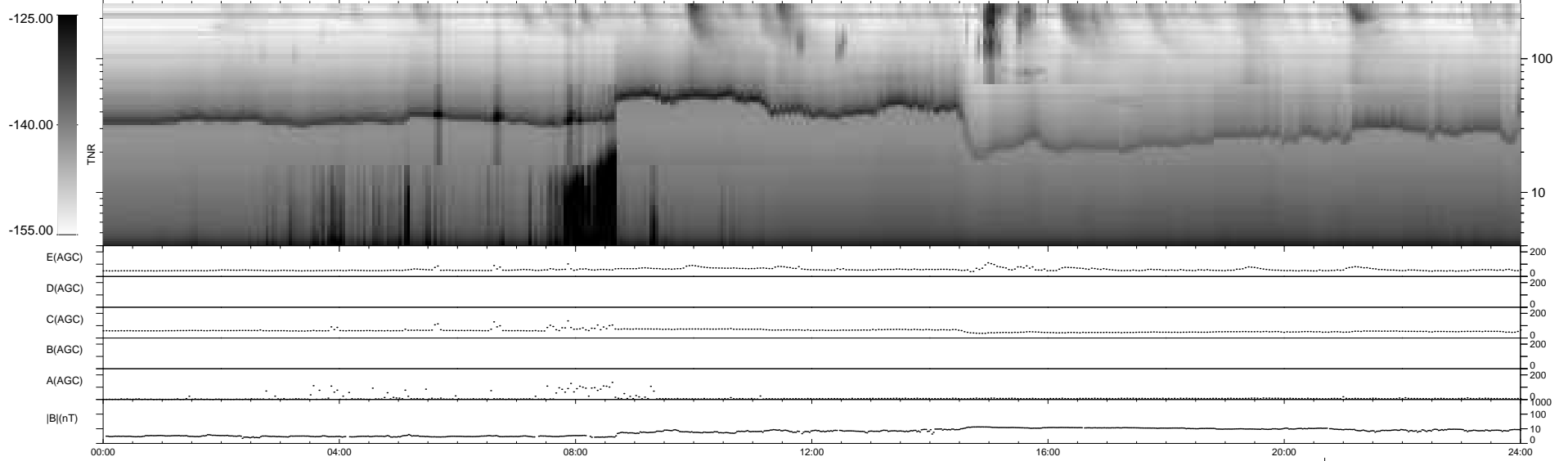
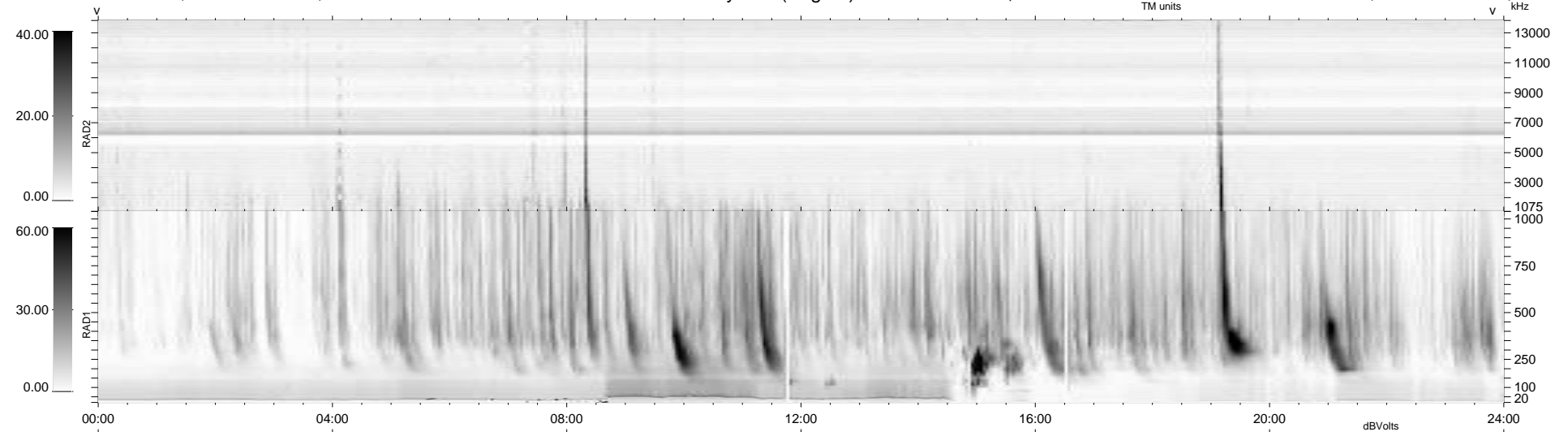
11 bad + 927 good MF/939MF projected (98%) - 1 missing MF  
 Avg interval = 180 secs  
 Re = 259.67 (256.15, 36.74, 21.61 GSE)

windlib 2.0b

LZ version = v01

### WIND/WAVES Summary Plot (Page 1) for 30-OCT-2011, DOY = 303

DAILY 2011-11-01 02:02:06  
 Re = 259.62 (256.50, 33.64, 21.93 GSE)



RAD2  
 Antenna Ey .....  
 Mode LIN(1) .....  
 SUM/SEP SEP .....  
 Toggle OFF .....  
 RAD1  
 Antenna Ex .....  
 Mode LIS(2,4) .....  
 SUM/SEP SUM .....  
 Toggle OFF .....  
 TNR  
 Antenna ExEy .....  
 Mode A-32 .....  
 Sweep ACE .....