

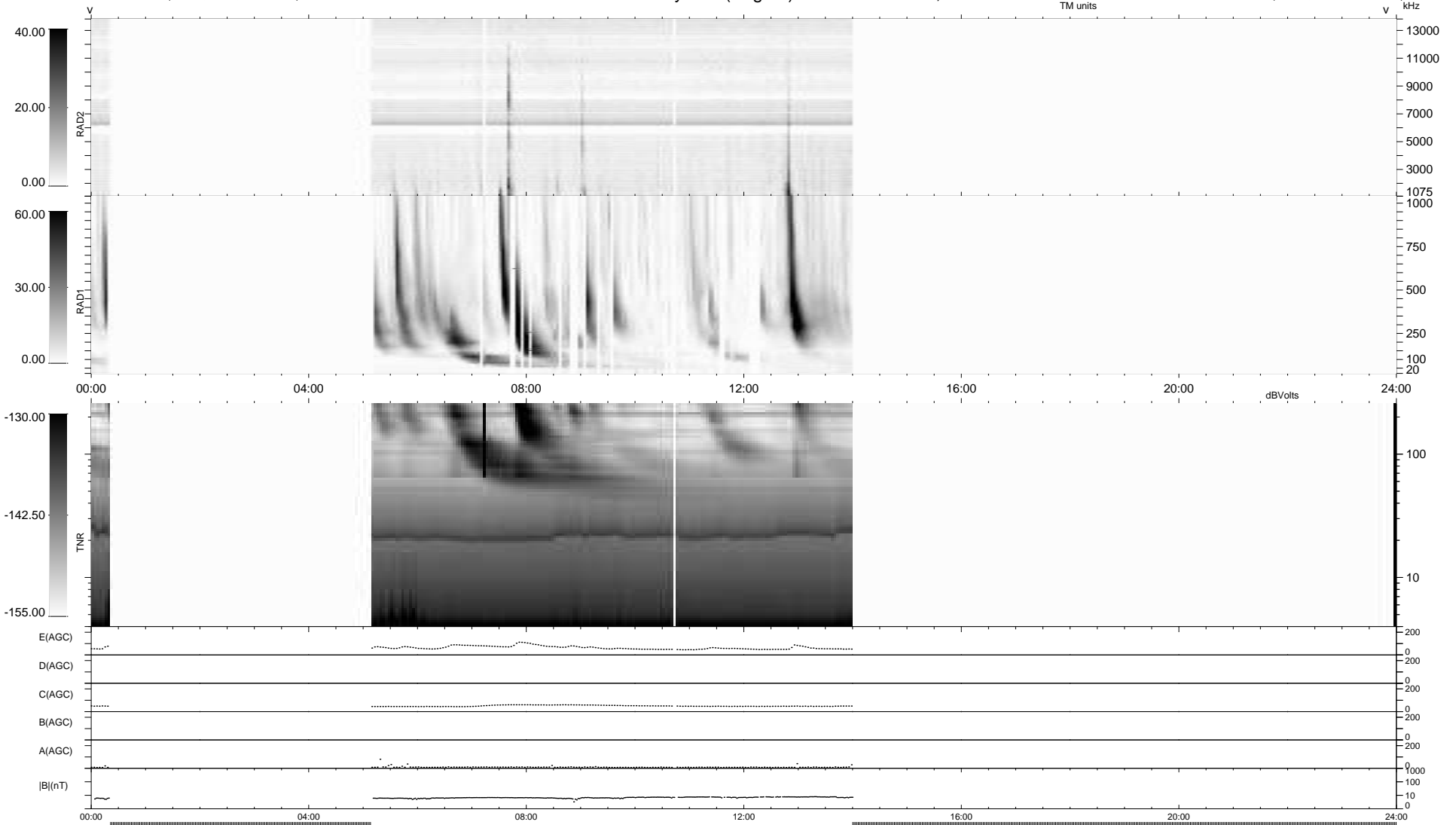
26 bad + 333 good MF/939MF projected (35%) - 580 missing MFs
 Avg interval = 180 secs
 Re = 259.33 (253.95, 48.56, 20.12 GSE)

windlib 2.0b

LZ version = v01

WIND/WAVES Summary Plot (Page 1) for 26-OCT-2011, DOY = 299

DAILY 2011-10-27 17:04:02
 Re = 259.50 (254.62, 45.71, 20.51 GSE)



RAD2
 Antenna Ey
 Mode LIN(1)
 SUM/SEP SEP
 Toggle OFF
 RAD1
 Antenna Ex
 Mode LIS(2,4)
 SUM/SEP SUM
 Toggle OFF
 TNR
 Antenna ExEy
 Mode A-32
 Sweep ACE