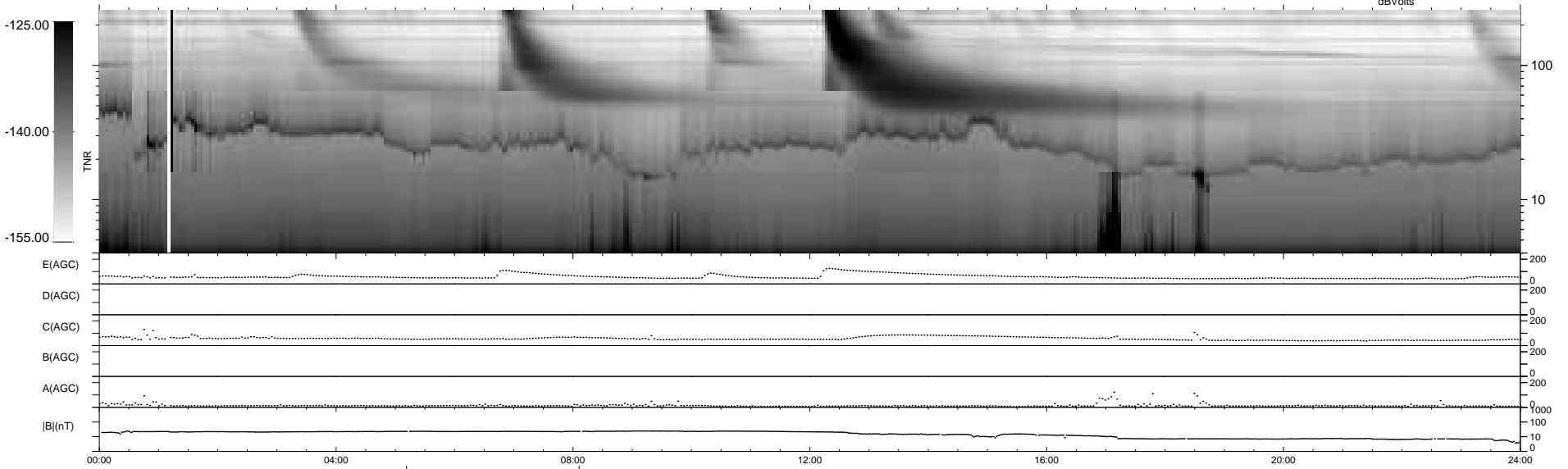
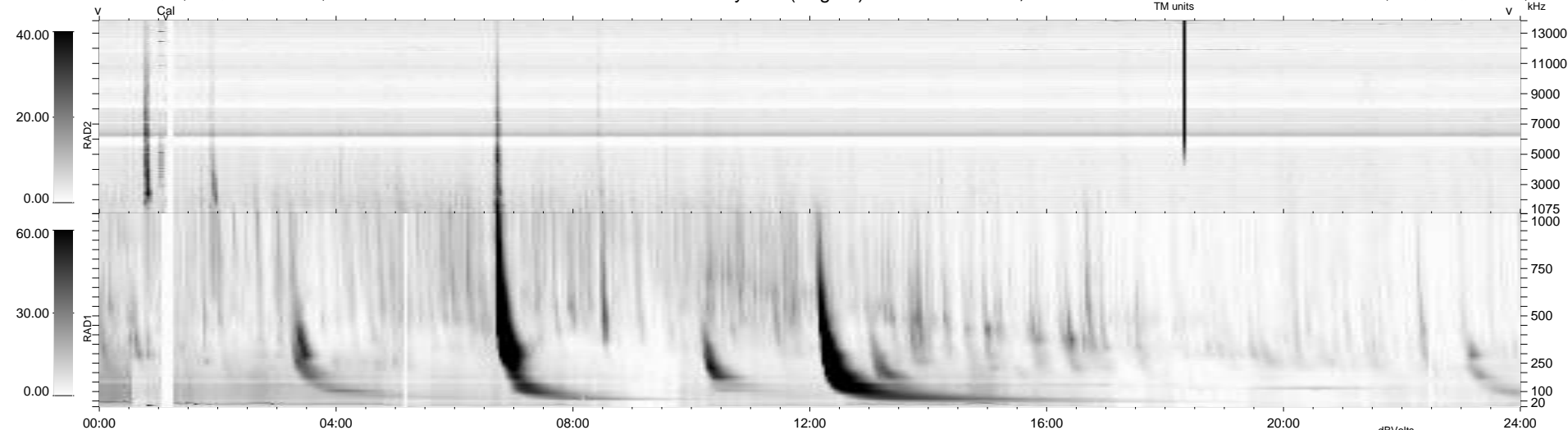


7 bad + 931 good MF/940MF projected (99%) - 2 missing MFs
 Avg interval = 180 secs
 Re = 259.11 (253.20, 51.37, 19.70 GSE)

windlib 2.0b LZ version = v02
 DAILY 2011-10-27 17:03:07
 Re = 259.33 (253.95, 48.58, 20.11 GSE)

WIND/WAVES Summary Plot (Page 1) for 25-OCT-2011, DOY = 298



```

RAD2
Antenna Ey .....
Mode LIN(1) .....
SUM/SEP SEP .....
Toggle OFF .....

RAD1
Antenna Ex .....
Mode LIS(2,4) .....
SUM/SEP SUM .....
Toggle OFF .....

TNR
Antenna ExEy .....
Mode A-32 .....
Sweep ACE .....
  
```