

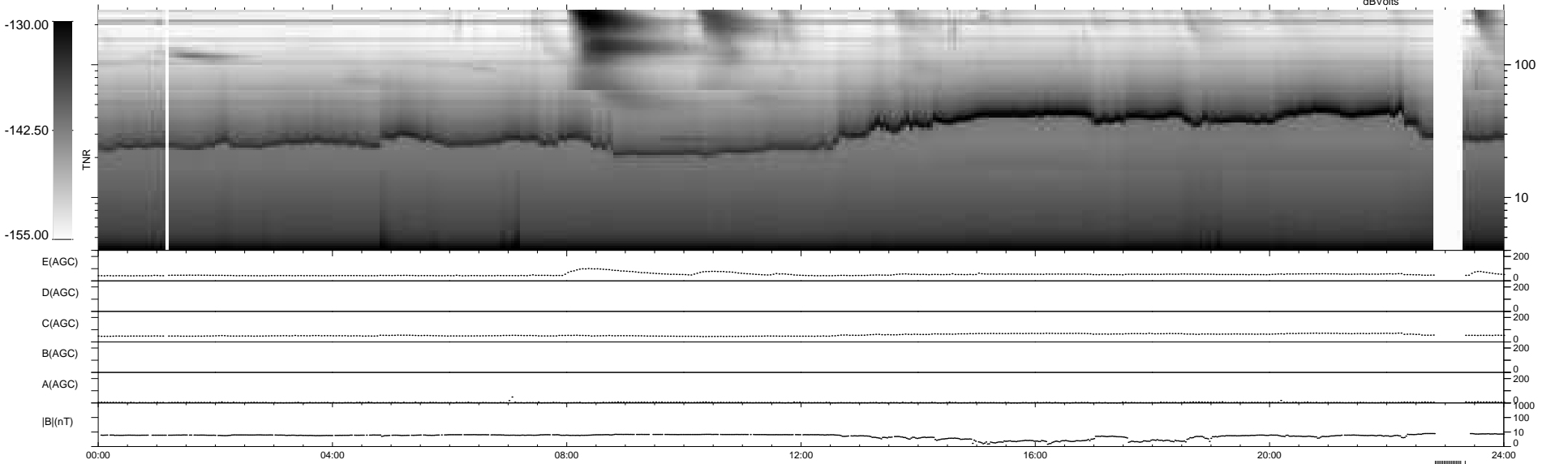
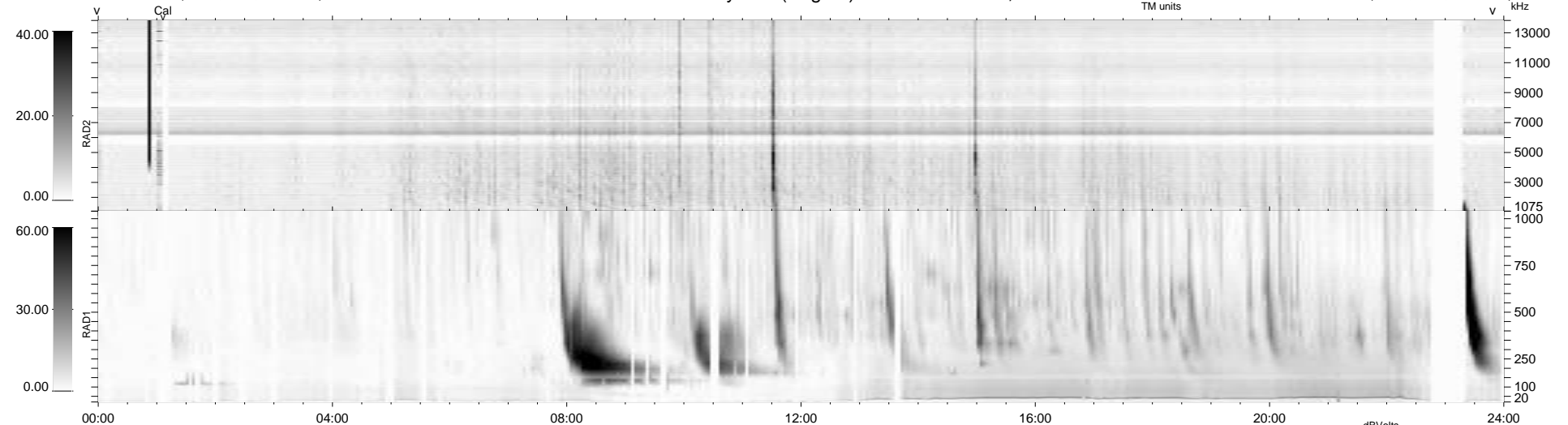
39 bad + 881 good MF/939MF projected (93%) - 19 missing MFs
 Avg interval = 180 secs
 Re = 258.52 (251.49, 56.86, 18.82 GSE)

windlib 2.0b

LZ version = v01

WIND/WAVES Summary Plot (Page 1) for 23-OCT-2011, DOY = 296

DAILY 2011-10-25 02:02:06
 Re = 258.83 (252.37, 54.16, 19.26 GSE)



RAD2
 Antenna Ey
 Mode LIN(1)
 SUM/SEP SEP
 Toggle OFF

RAD1
 Antenna Ex
 Mode LIS(2,4)
 SUM/SEP SUM
 Toggle OFF

TNR
 Antenna ExEy
 Mode A-32
 Sweep ACE