

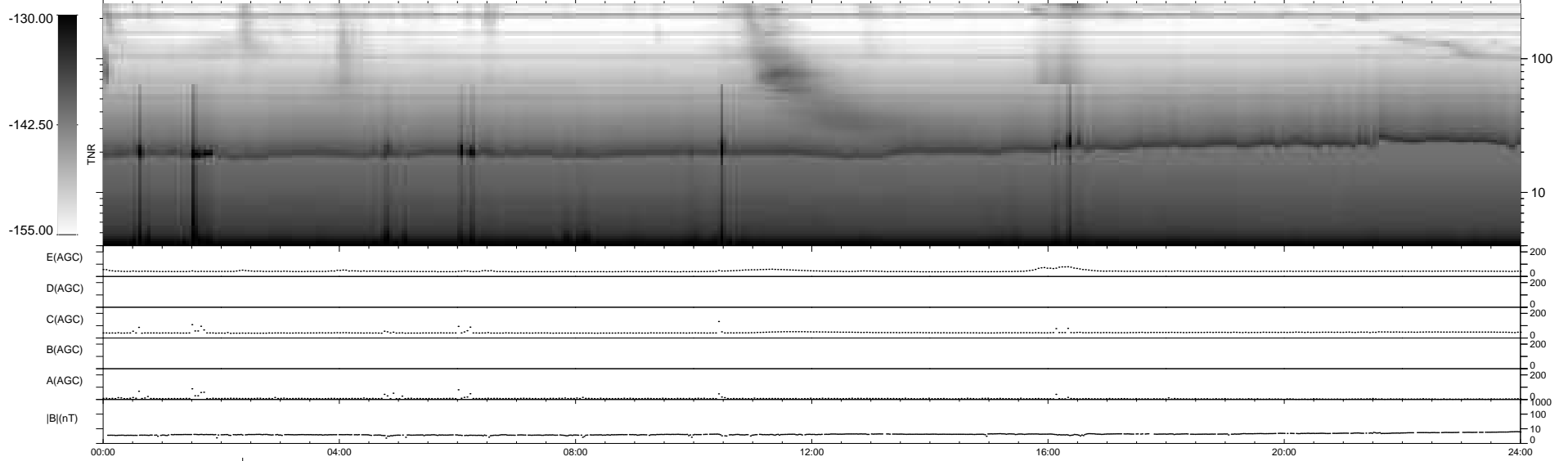
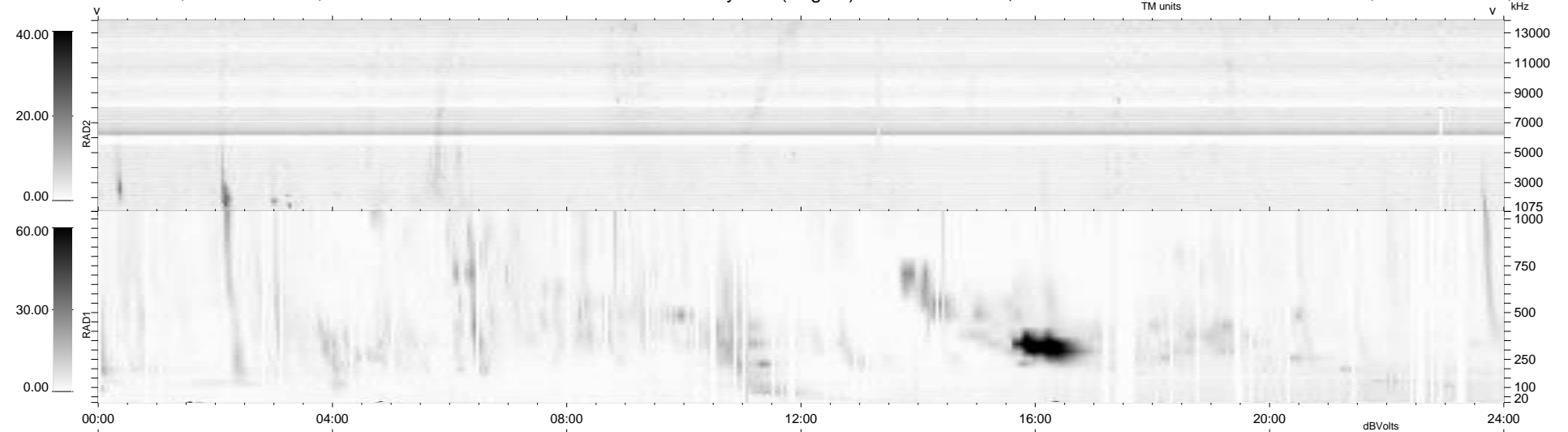
66 bad + 872 good MF/939MF projected (92%) - 1 missing MF
 Avg interval = 180 secs
 Re = 258.17 (250.54, 59.55, 18.35 GSE)

windlib 2.0b

LZ version = v01

WIND/WAVES Summary Plot (Page 1) for 22-OCT-2011, DOY = 295

DAILY 2011-10-23 21:02:09
 Re = 258.52 (251.48, 56.88, 18.81 GSE)



```

RAD2
Antenna  Ey .....
Mode     LIN(1) .....
SUM/SEP  SEP .....
Toggle   OFF .....

RAD1
Antenna  Ex .....
Mode     LIS(2/4) .....
SUM/SEP  SUM .....
Toggle   OFF .....

TNR
Antenna  ExEy .....
Mode     A-32 .....
Sweep    ACE .....
  
```