

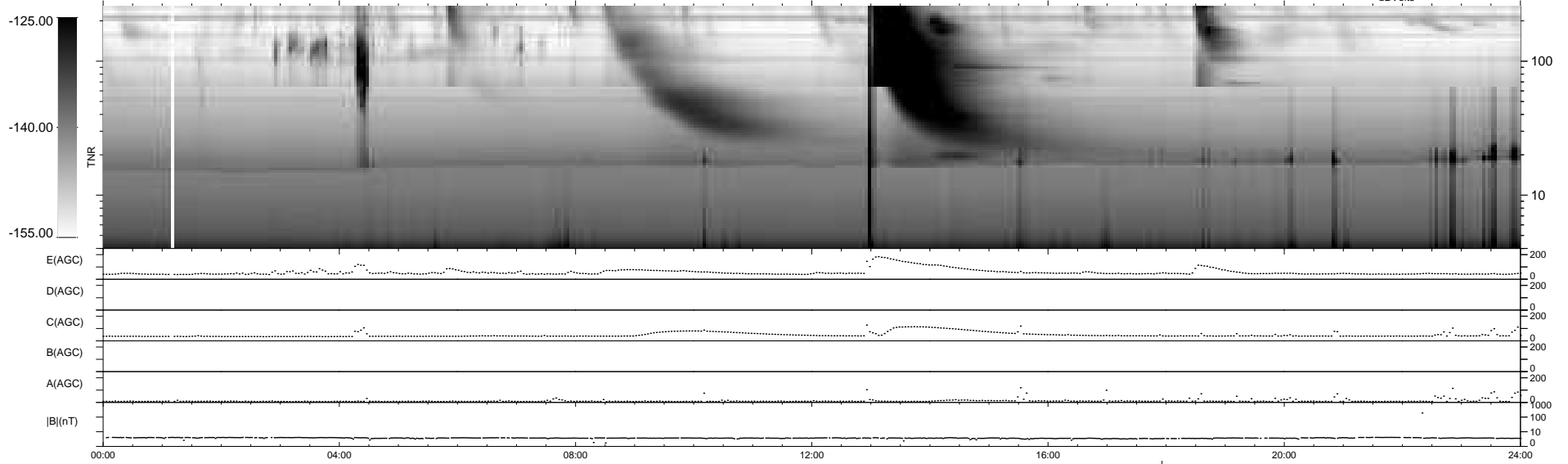
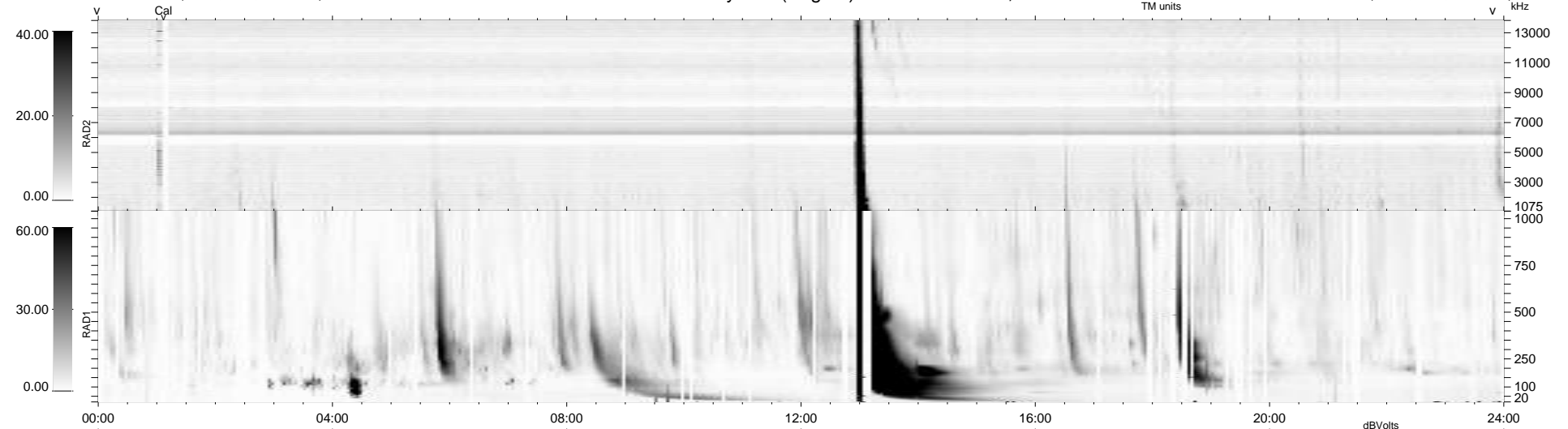
60 bad + 878 good MF/939MF projected (93%) - 1 missing MF  
 Avg interval = 180 secs  
 Re = - 257.79 (249.54, 62.19, 17.87 GSE)

windlib 2.0b

LZ version = v01

### WIND/WAVES Summary Plot (Page 1) for 21-OCT-2011, DOY = 294

DAILY 2011-10-22 23:02:07  
 Re = 258.17 (250.53, 59.56, 18.35 GSE)



RAD2  
 Antenna Ey .....  
 Mode LIN(1) .....  
 SUM/SEP SEP .....  
 Toggle OFF .....  
 RAD1  
 Antenna .....  
 Mode .....  
 SUM/SEP .....  
 Toggle .....  
 TNR  
 Antenna ExEy .....  
 Mode A-32 .....  
 Sweep ACE .....