

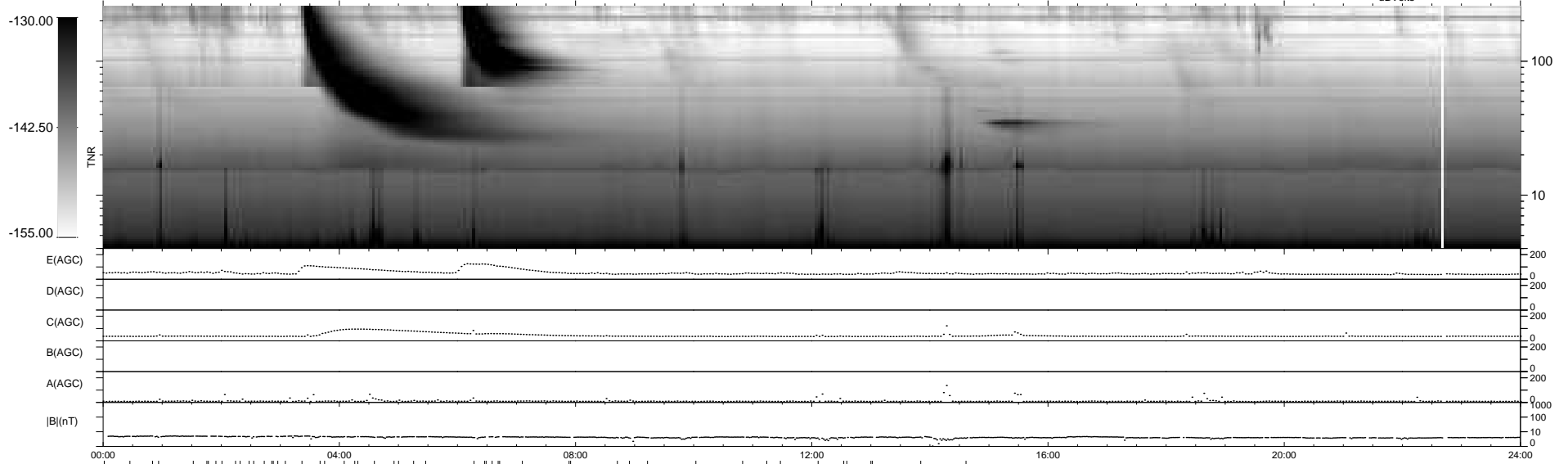
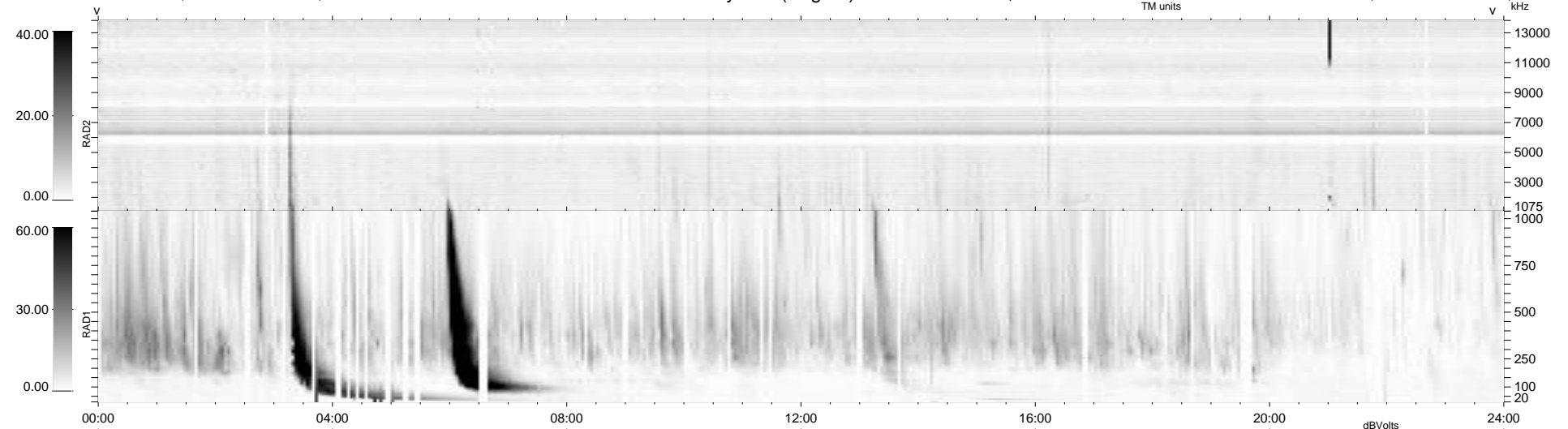
26 bad + 861 good MF/939MF projected (91%) - 52 missing MFs
 Avg interval = 180 secs
 Re = 257.40 (248.50, 64.79, 17.38 GSE)

windlib 2.0b

LZ version = v01

WIND/WAVES Summary Plot (Page 1) for 20-OCT-2011, DOY = 293

DAILY 2011-10-21 21:02:08
 Re = 257.79 (249.53, 62.21, 17.87 GSE)



RAD2 Antenna Ey
 Mode LIN(1)
 SUM/SEP SEP
 Toggle OFF
 RAD1 Antenna
 Mode
 SUM/SEP
 Toggle
 TNR Antenna ExEy
 Mode A-32
 Sweep ACE