

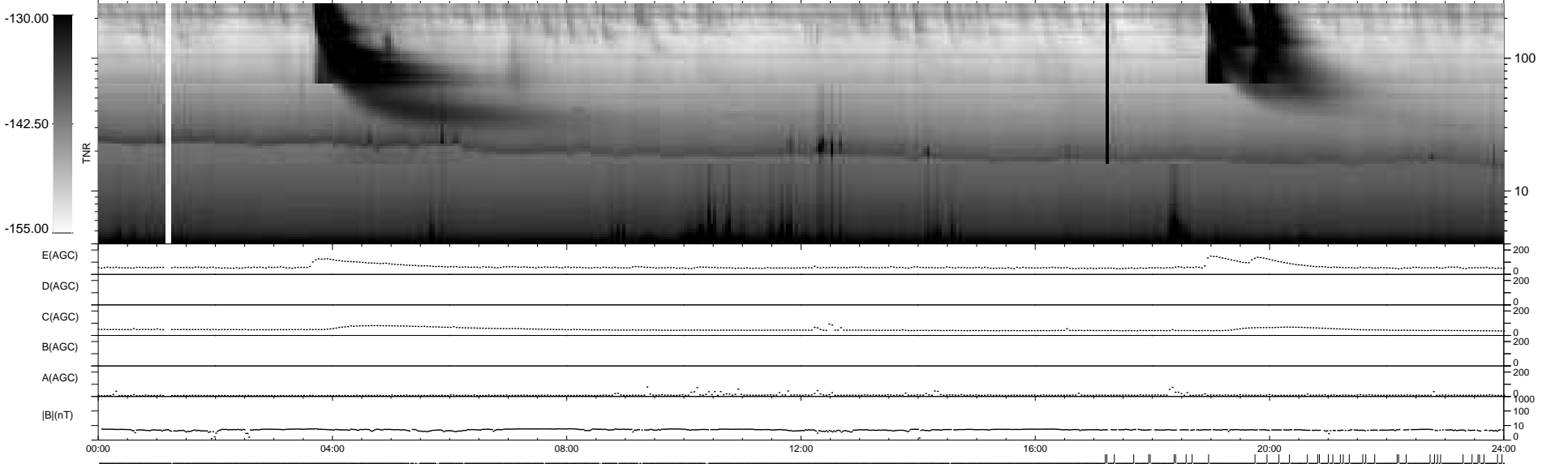
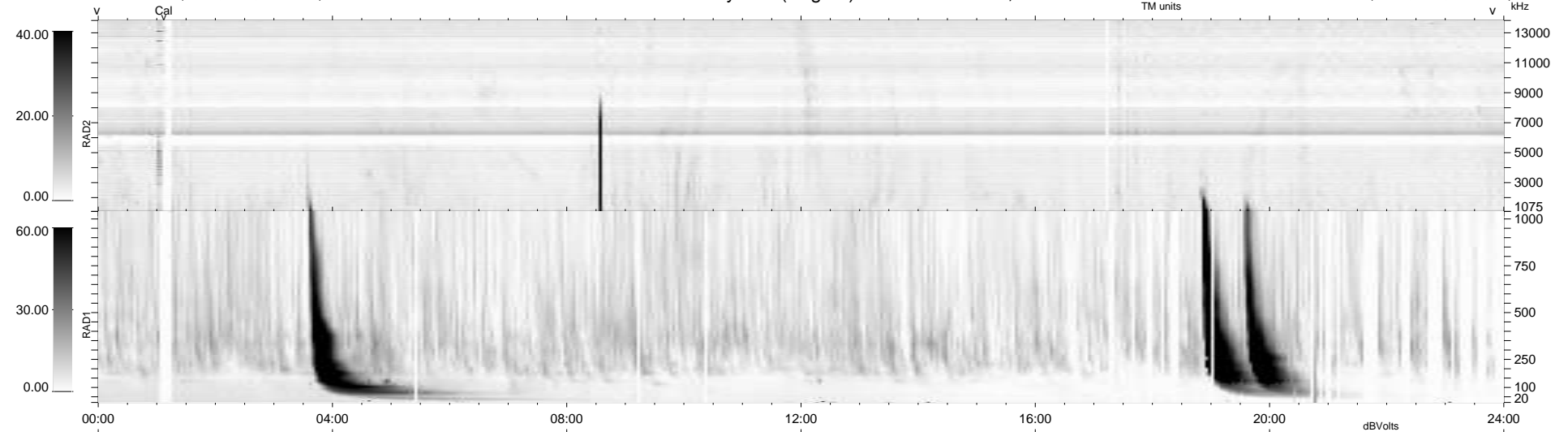
17 bad + 882 good MF/939MF projected (93%) - 40 missing MFs
 Avg interval = 180 secs
 Re = 256.99 (247.43, 67.35, 16.87 GSE)

windlib 2.0b

LZ version = v02

WIND/WAVES Summary Plot (Page 1) for 19-OCT-2011, DOY = 292

DAILY 2011-10-24 15:02:07
 Re = 257.39 (248.49, 64.81, 17.38 GSE)



```

RAD2
Antenna Ey .....
Mode LIN(1) .....
SUM/SEP SEP .....
Toggle OFF .....

RAD1
Antenna Ex .....
Mode LIS(2,4) .....
SUM/SEP SUM .....
Toggle OFF .....

TNR
Antenna ExEy .....
Mode A-32 .....
Sweep ACE .....
  
```