

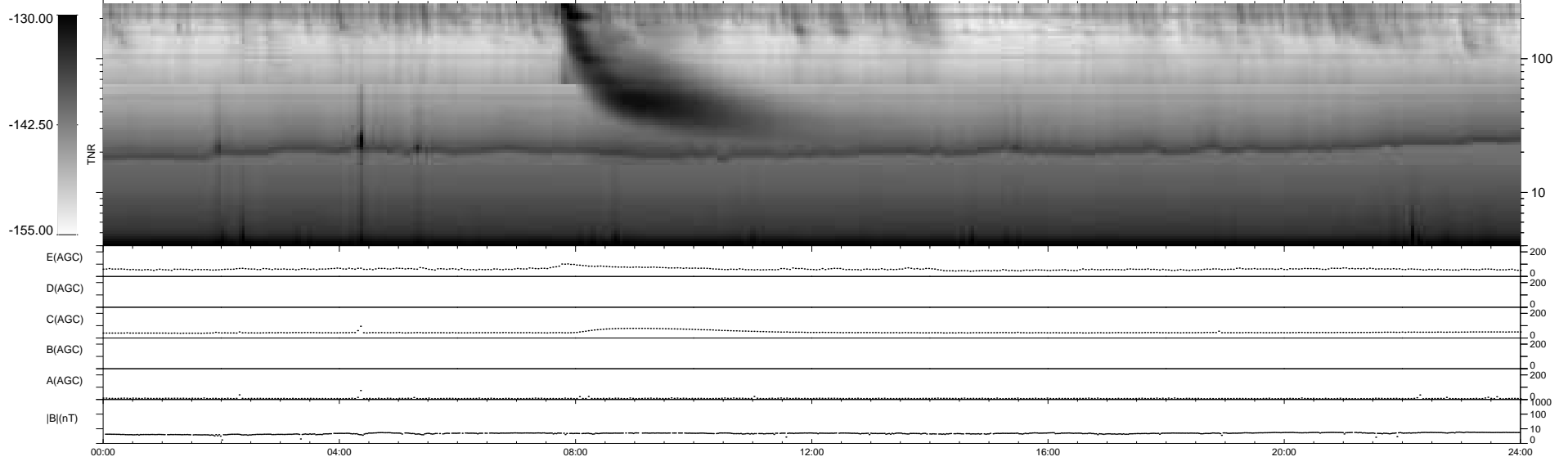
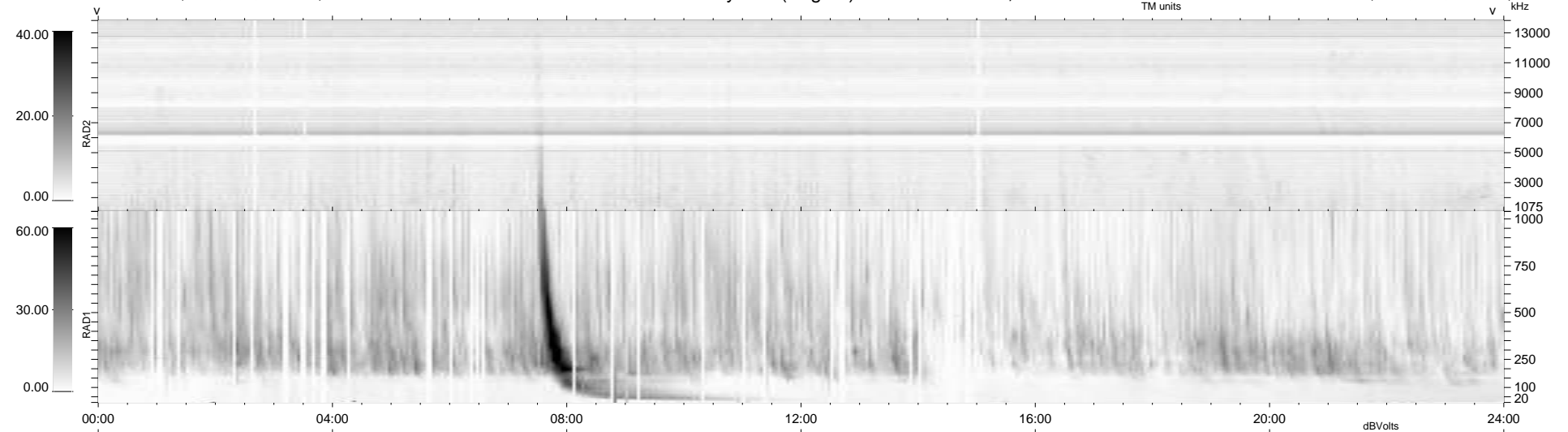
42 bad + 898 good MF/940MF projected (95%) - 0 missing MFs
 Avg interval = 180 secs
 Re = 256.58 (246.34, 69.85, 16.35 GSE)

windlib 2.0b

LZ version = v01

WIND/WAVES Summary Plot (Page 1) for 18-OCT-2011, DOY = 291

DAILY 2011-10-19 14:02:06
 Re = 256.99 (247.42, 67.36, 16.87 GSE)



RAD2
 Antenna Ey
 Mode LIN(1)
 SUM/SEP SEP
 Toggle OFF

RAD1
 Antenna Ex
 Mode LIS(2,4)
 SUM/SEP SUM
 Toggle OFF

TNR
 Antenna ExEy
 Mode A-32
 Sweep ACE