

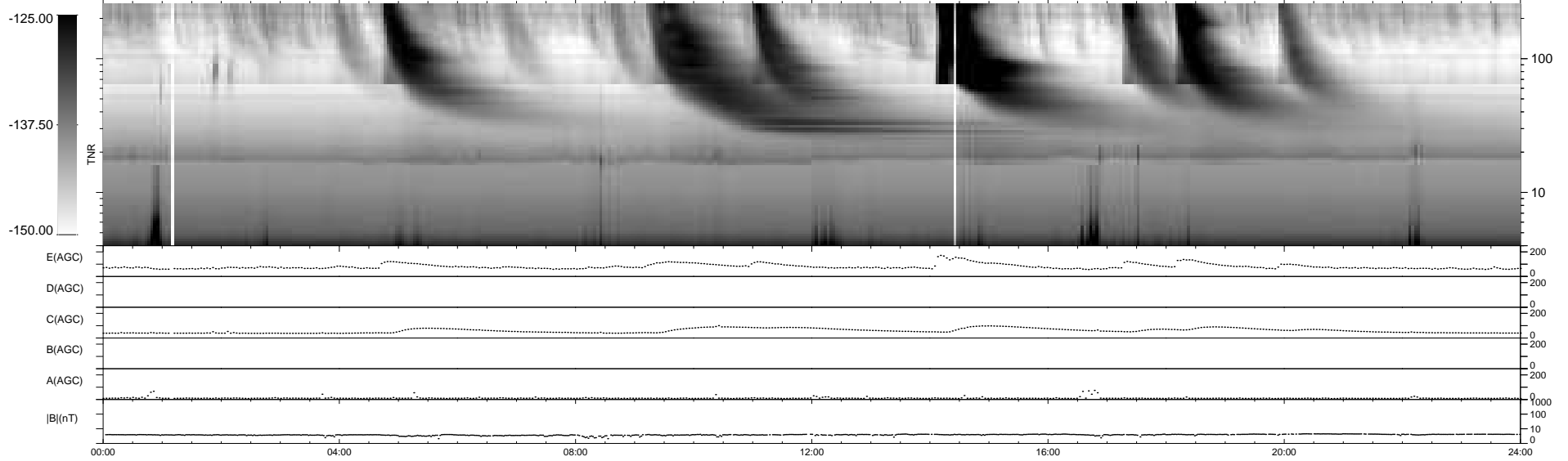
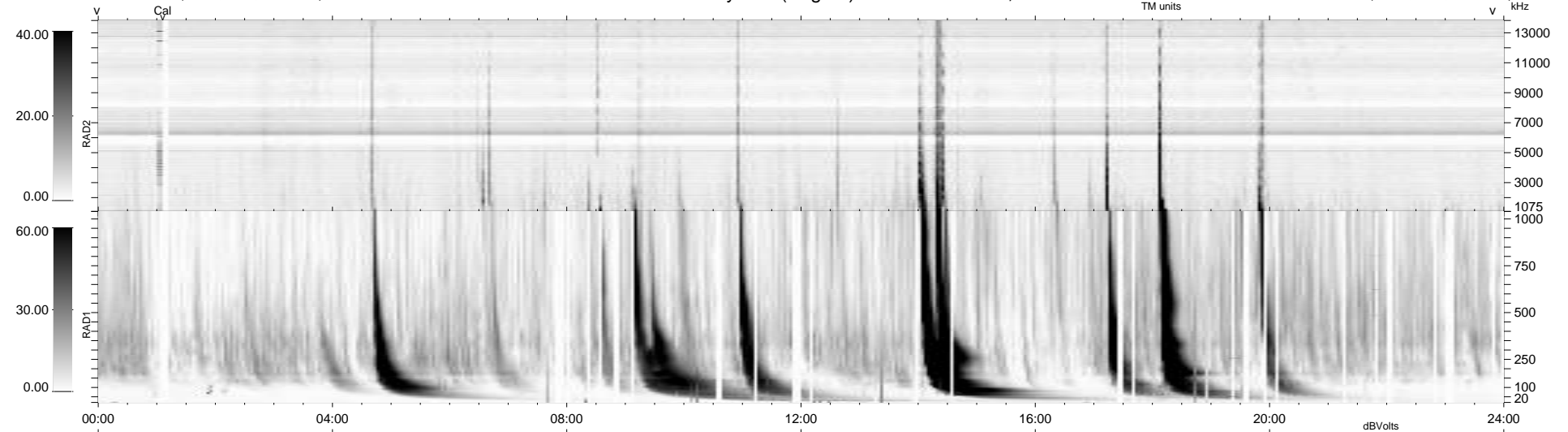
53 bad + 886 good MF/939MF projected (94%) - 0 missing MFs
 Avg interval = 180 secs
 Re = 256.16 (245.24, 72.30, 15.81 GSE)

windlib 2.0b

LZ version = v01

WIND/WAVES Summary Plot (Page 1) for 17-OCT-2011, DOY = 290

DAILY 2011-10-18 22:02:07
 Re = 256.57 (246.33, 69.87, 16.34 GSE)



RAD2
 Antenna Ey
 Mode LIN(1)
 SUM/SEP SEP
 Toggle OFF

RAD1
 Antenna Ex
 Mode LIS(2,4)
 SUM/SEP SUM
 Toggle OFF

TNR
 Antenna ExEy
 Mode A-32
 Sweep ACE