

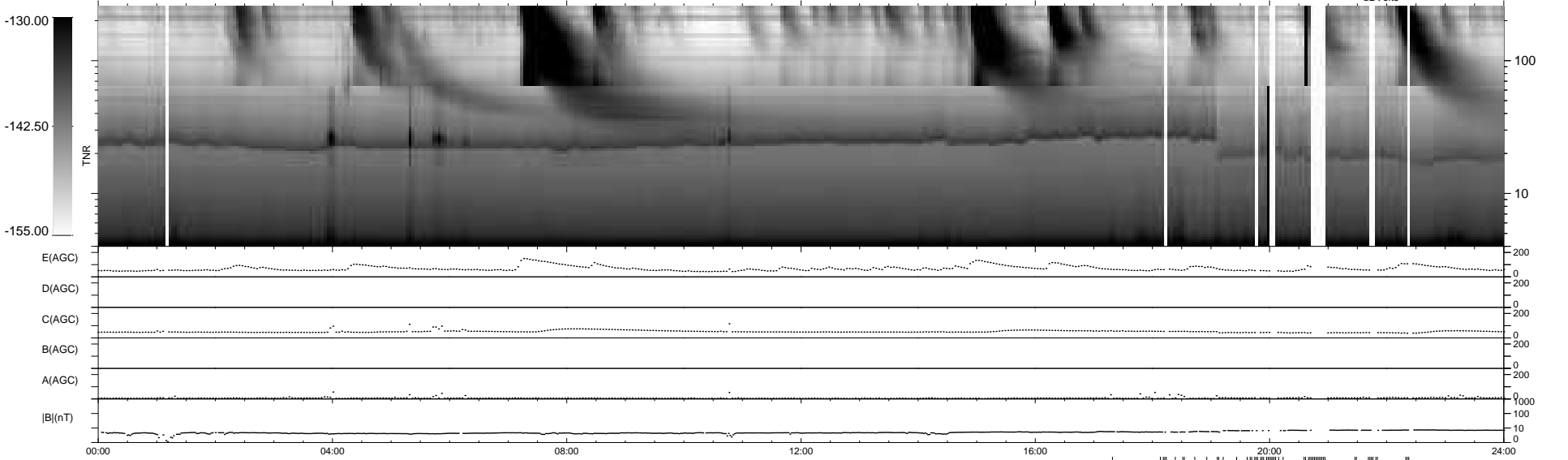
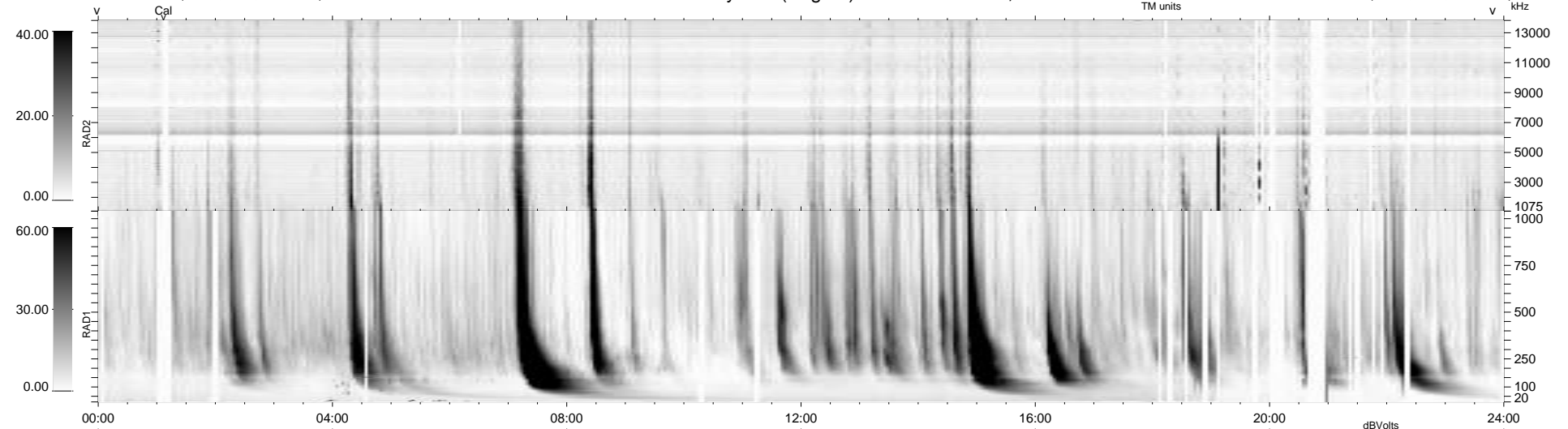
17 bad + 865 good MF/939MF projected (92%) - 57 missing MFs
 Avg interval = 180 secs
 Re = 254.53 (240.79, 81.40, 13.49 GSE)

windlib 2.0b

LZ version = v01

WIND/WAVES Summary Plot (Page 1) for 13-OCT-2011, DOY = 286

DAILY 2011-10-15 16:02:06
 Re = 254.93 (241.89, 79.26, 14.09 GSE)



RAD2
 Antenna Ey
 Mode LIN(1)
 SUM/SEP SEP
 Toggle OFF
 RAD1
 Antenna Ex
 Mode LIS(2/4)
 SUM/SEP SUM
 Toggle OFF
 TNR
 Antenna ExEy
 Mode A-32
 Sweep ACE