

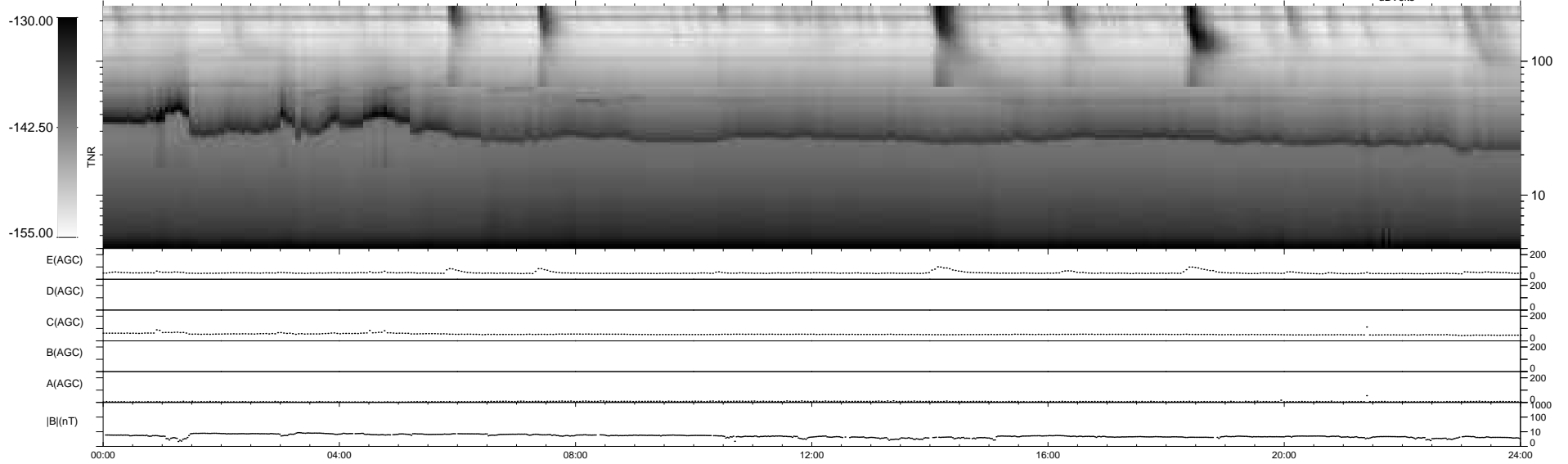
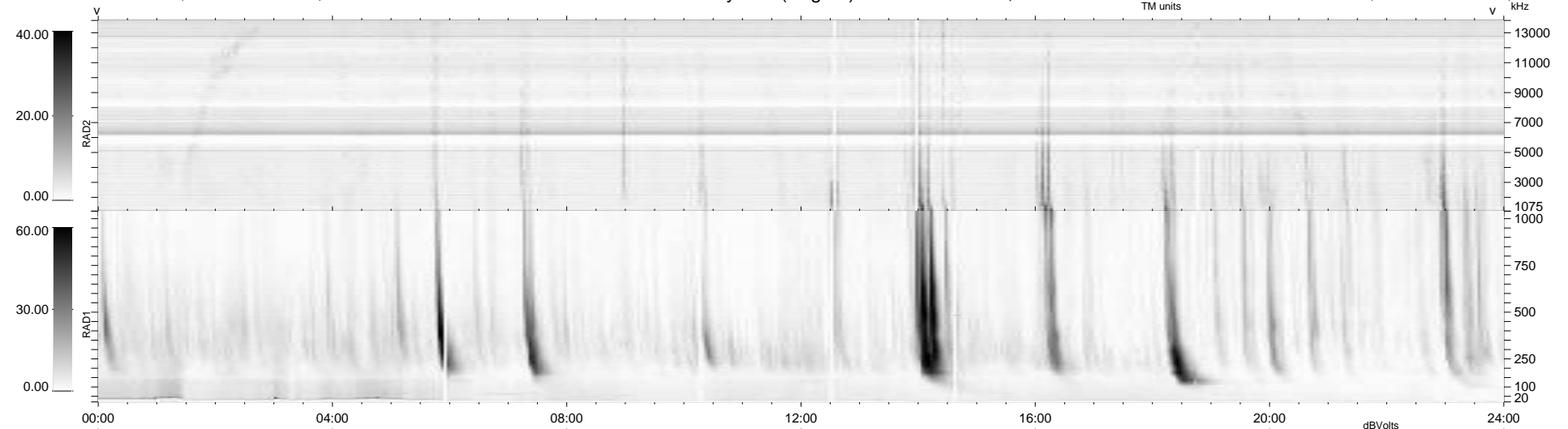
17 bad + 923 good MF/940MF projected (98%) - 0 missing MFs  
 Avg interval = 180 secs  
 Re = 253.34 (237.54, 87.28, 11.59 GSE)

windlib 2.0b

LZ version = v01

### WIND/WAVES Summary Plot (Page 1) for 10-OCT-2011, DOY = 283

DAILY 2011-10-11 19:02:06  
 Re = 253.74 (238.60, 85.44, 12.24 GSE)



RAD2  
 Antenna Ey  
 Mode LIN(1)  
 SUM/SEP SEP  
 Toggle OFF

RAD1  
 Antenna Ex  
 Mode LIS(2,4)  
 SUM/SEP SUM  
 Toggle OFF

TNR  
 Antenna ExEy  
 Mode A-32  
 Sweep ACE