

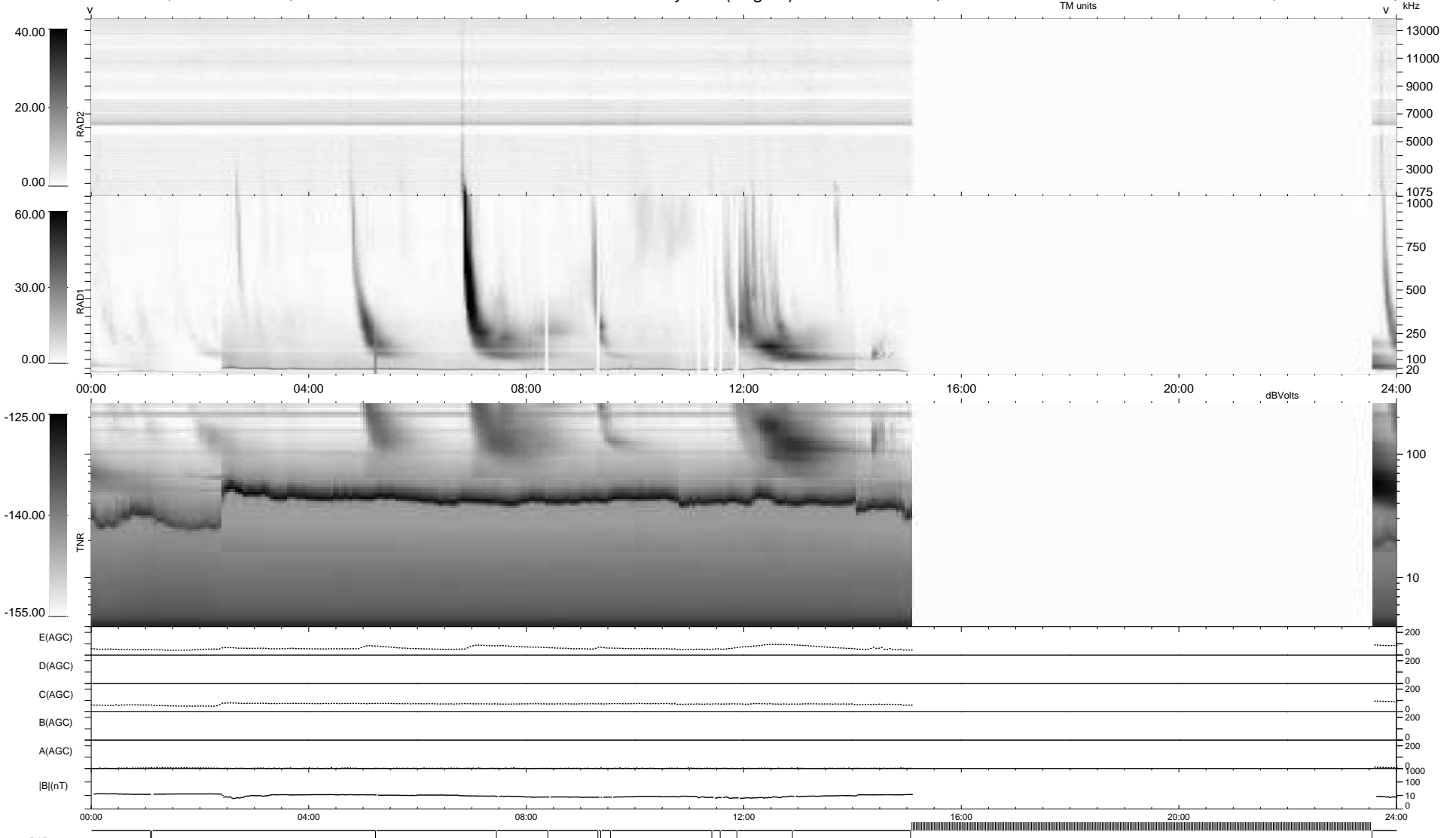
14 bad + 594 good MF/939MF projected (63%) - 331 missing MFs  
 Avg interval = 180 secs  
 Re = -251.61 (233.42, 93.49, 8.86 GSE)

windlib 2.0b

LZ version = v01

### WIND/WAVES Summary Plot (Page 1) for 06-OCT-2011, DOY = 279

DAILY 2011-10-07 13:02:06  
 Re = 252.07 (234.43, 92.14, 9.56 GSE)



```

RAD2
Antenna Ey .....
Mode LIN(1) .....
SUM/SEP SEP .....
Toggle OFF .....

RAD1
Antenna Ex .....
Mode LIS(2,4) .....
SUM/SEP SUM .....
Toggle OFF .....

TNR
Antenna ExEy .....
Mode A-32 .....
Sweep ACE .....
  
```