

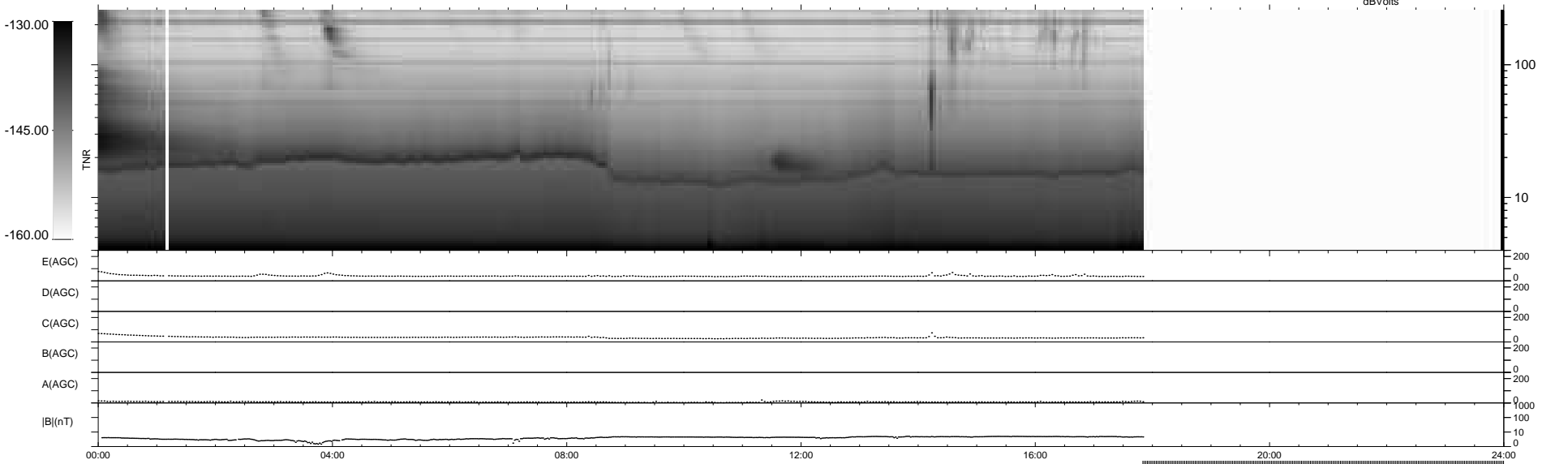
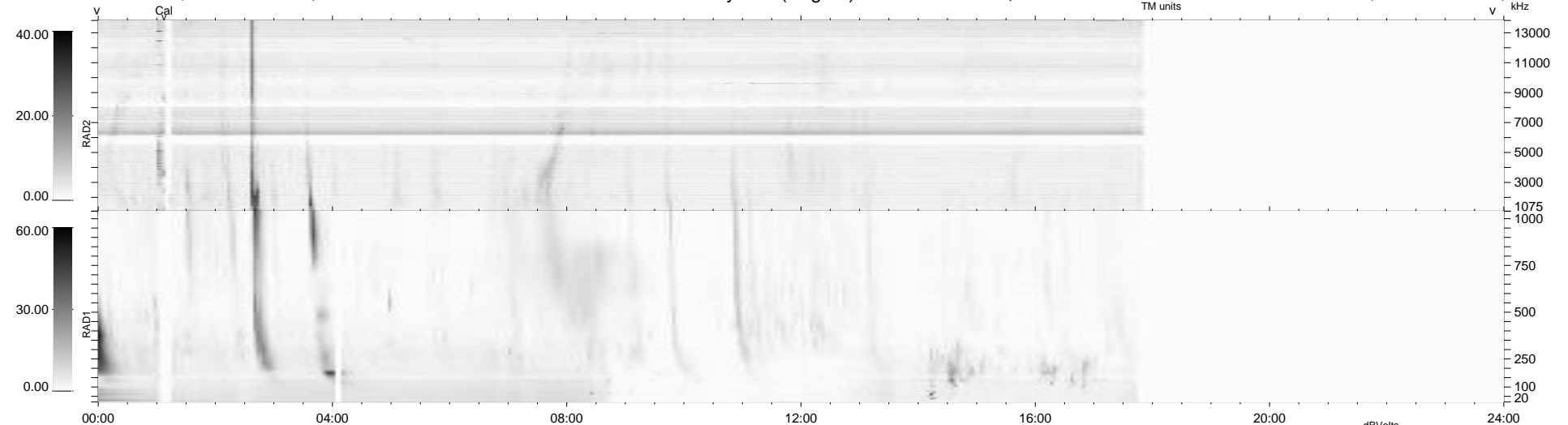
4 bad + 693 good MF/939MF projected (73%) - 242 missing MFs
 Avg interval = 180 secs
 Re = - 249.99 (230.44, 96.70, 6.68 GSE)

windlib 2.0b

LZ version = v01

WIND/WAVES Summary Plot (Page 1) for 03-OCT-2011, DOY = 276

DAILY 2011-10-05 01:02:07
 Re = 250.57 (231.42, 95.78, 7.41 GSE)



```

RAD2
Antenna Ey .....
Mode LIN(1) .....
SUM/SEP SEP .....
Toggle OFF .....

RAD1
Antenna Ex .....
Mode LIS(2,4) .....
SUM/SEP SUM .....
Toggle OFF .....

TNR
Antenna ExEy .....
Mode A-32 .....
Sweep ACE .....
  
```