

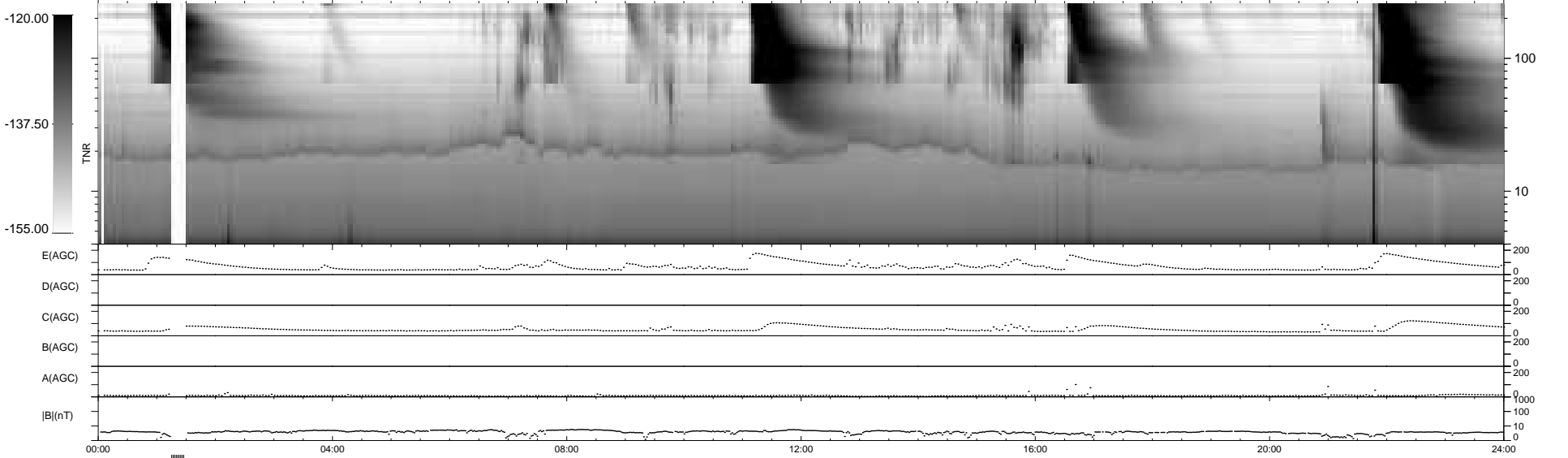
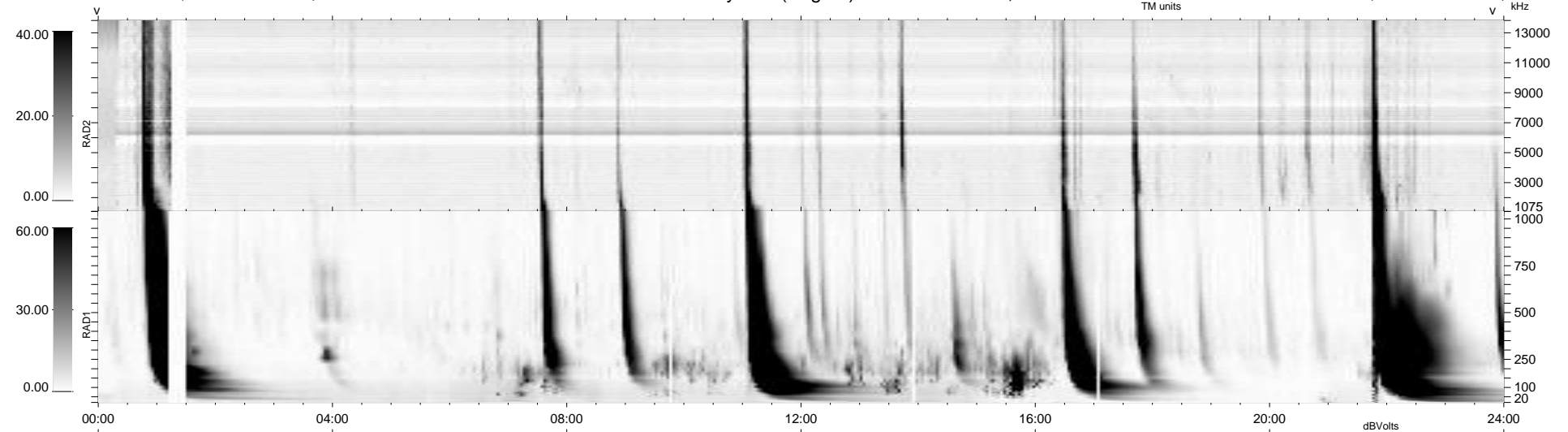
16 bad + 915 good MF/940MF projected (97%) - 9 missing MFs
 Avg interval = 180 secs
 Re = -249.36 (229.44, 97.48, 5.94 GSE)

windlib 2.0b

LZ version = v01

WIND/WAVES Summary Plot (Page 1) for 02-OCT-2011, DOY = 275

DAILY 2011-10-03 17:02:06
 Re = 249.99 (230.43, 96.71, 6.68 GSE)



```

RAD2
Antenna  Ey .....
Mode LIS(0,0) LIN(0) .....
SUM/SEP SUM . . . SEP. ....
Toggle OFF .....

RAD1
Antenna  Ex .....
Mode LIS(0,0) LIS(2,4) .....
SUM/SEP SUM .....
Toggle OFF .....

TNR
Antenna  ExEy .....
Mode A-32 .....
Sweep ACE .....
  
```