

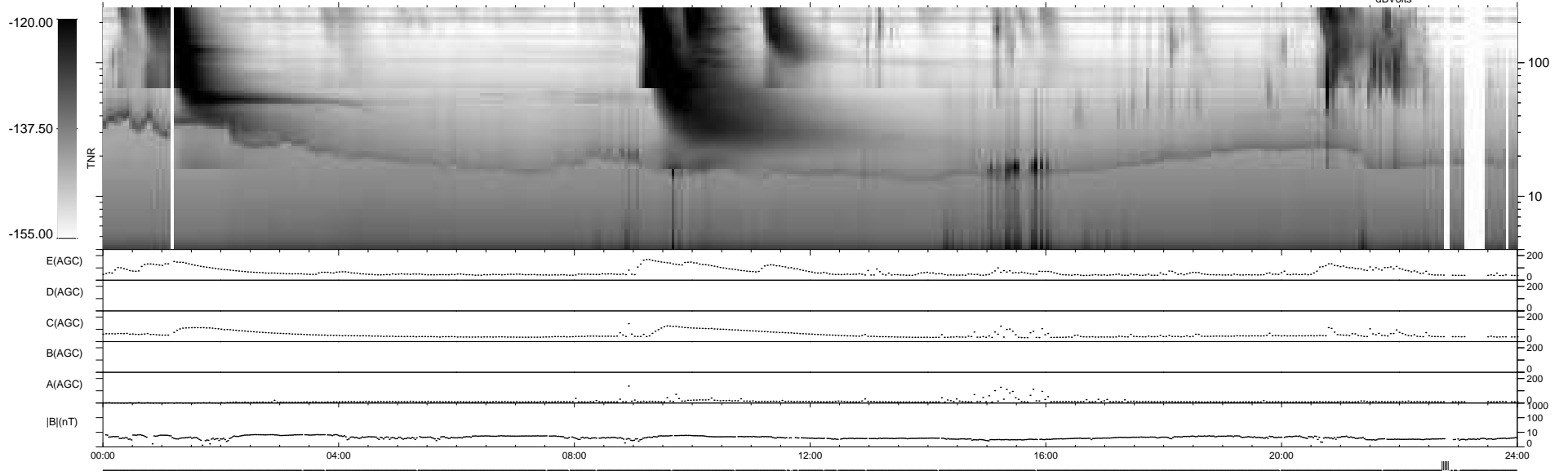
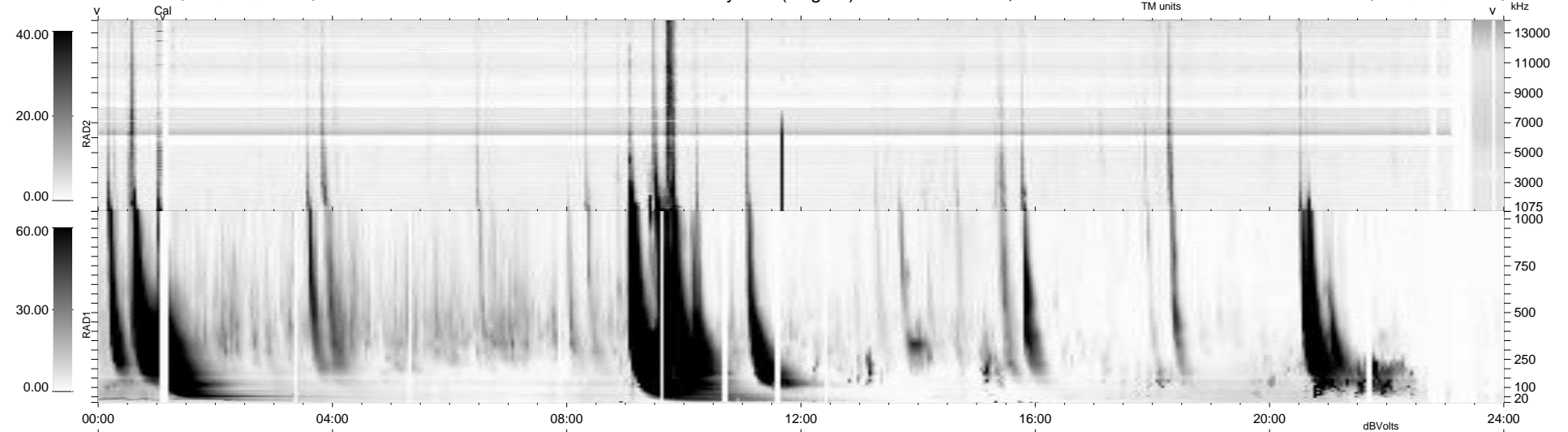
23 bad + 911 good MF/939MF projected (97%) - 5 missing MFs  
 Avg interval = 180 secs  
 Re = -248.66 (228.43, 98.11, 5.19 GSE)

windlib 2.0b

LZ version = v01

### WIND/WAVES Summary Plot (Page 1) for 01-OCT-2011, DOY = 274

DAILY 2011-10-03 16:02:10  
 Re = 249.35 (229.43, 97.49, 5.94 GSE)



RAD2  
 Antenna Ey .....  
 Mode LIN(1) .....  
 SUM/SEP SEP .....  
 Toggle OFF .....  
 RAD1  
 Antenna Ex .....  
 Mode LIS(2/4) .....  
 SUM/SEP SUM .....  
 Toggle OFF .....  
 TNR  
 Antenna ExEy .....  
 Mode A-32 .....  
 Sweep ACE .....