

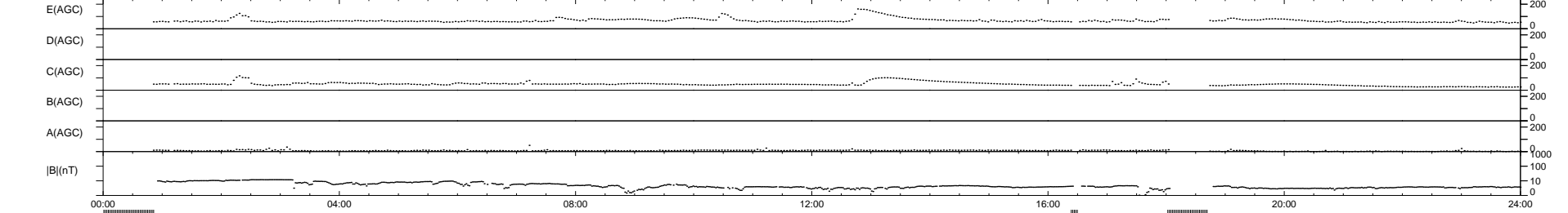
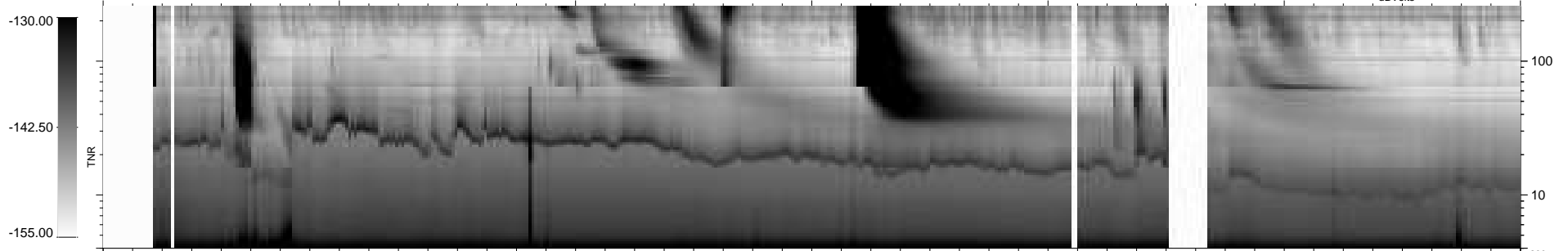
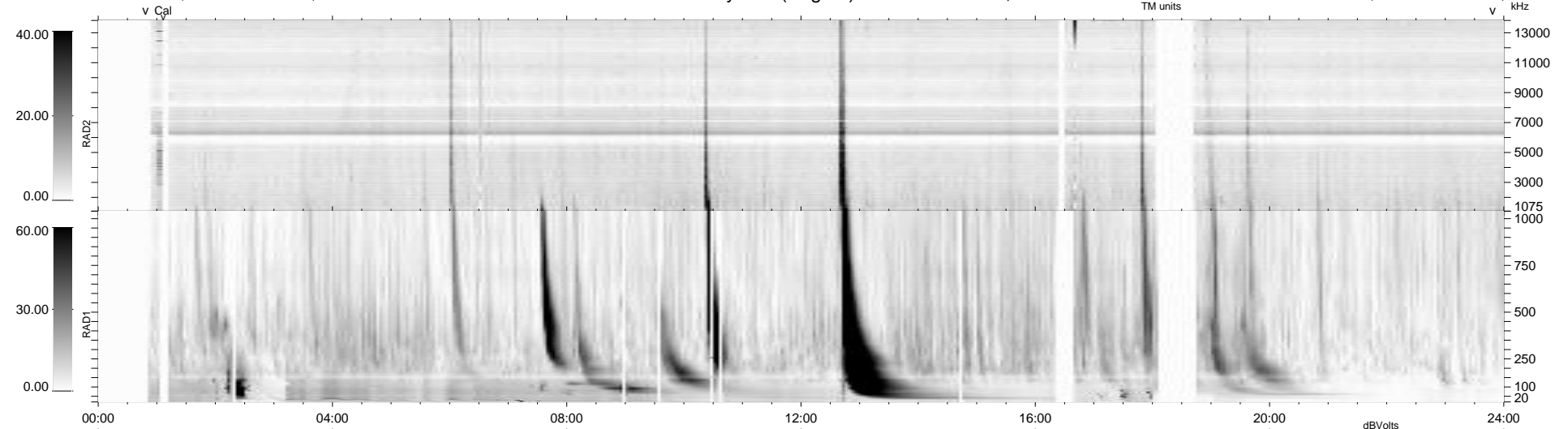
23 bad + 850 good MF/939MF projected (90%) - 66 missing MFs
Avg interval = 180 secs
Re = -247.10 (226.40, 98.94, 3.71 GSE)

windlib 2.0b

LZ version = v01

WIND/WAVES Summary Plot (Page 1) for 29-SEP-2011, DOY = 272

DAILY 2011-09-30 21:02:11
Re = 247.89 (227.40, 98.60, 4.44 GSE)



RAD2 Antenna Mode SUM/SEP Toggle
RAD1 Antenna Mode SUM/SEP Toggle
TNR Antenna Mode Sweep