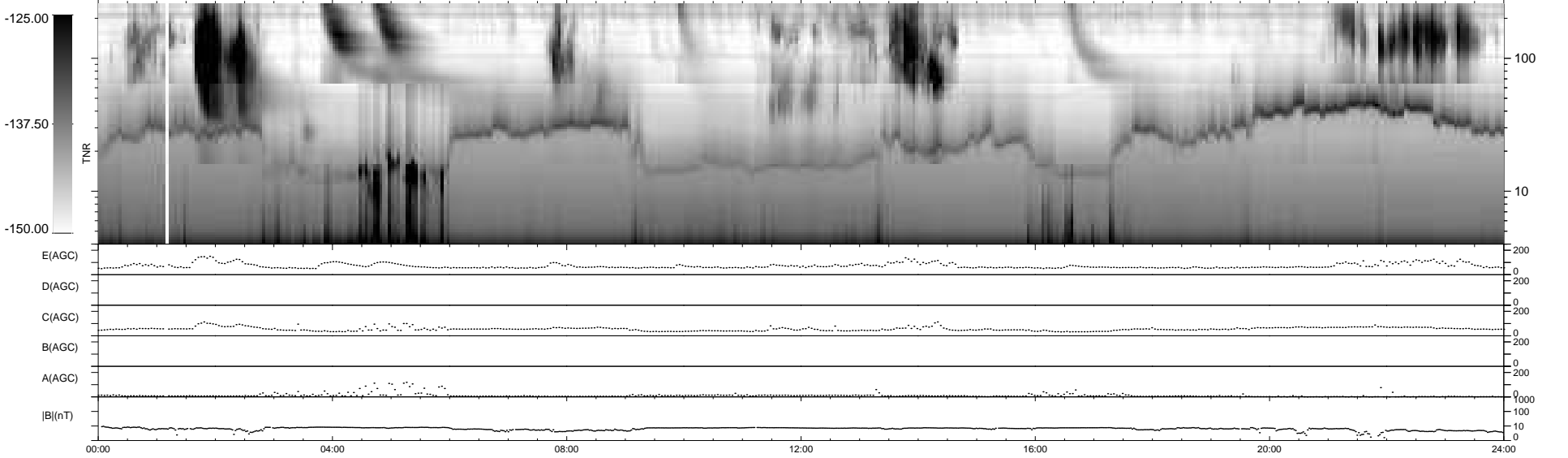
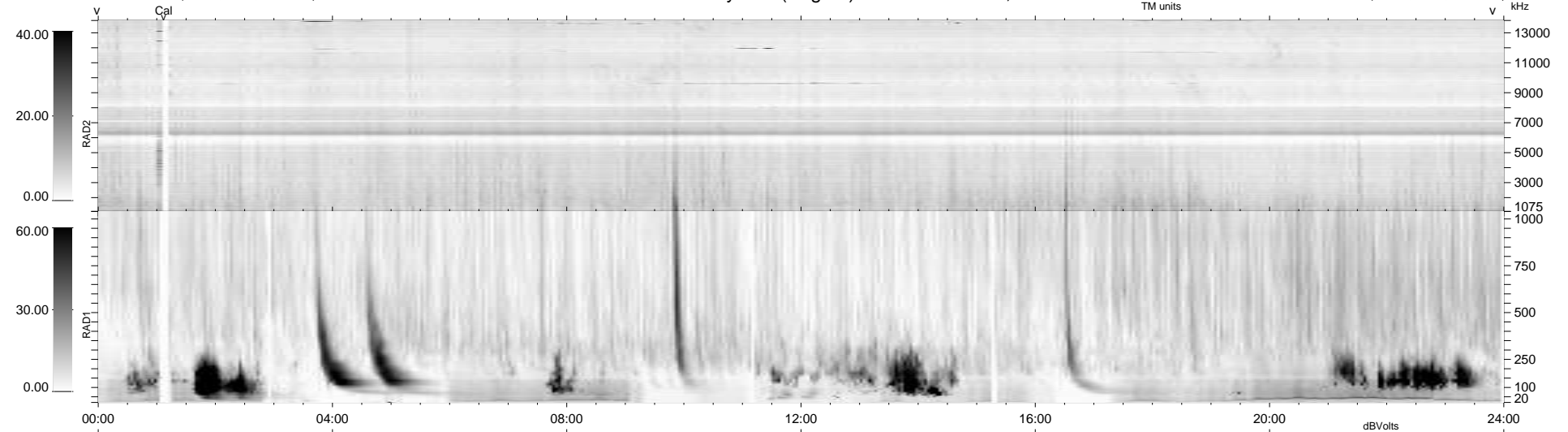


5 bad + 934 good MF/939MF projected (99%) - 0 missing MFs  
 Avg interval = 180 secs  
 Re = -245.19 (224.19, 99.25, 2.18 GSE)

windlib 2.0b LZ version = v01  
 DAILY 2011-09-28 11:02:06  
 Re = 246.16 (225.28, 99.16, 2.93 GSE)

### WIND/WAVES Summary Plot (Page 1) for 27-SEP-2011, DOY = 270



RAD2  
 Antenna Ey .....  
 Mode LIN(1) .....  
 SUM/SEP SEP .....  
 Toggle OFF .....  
 RAD1  
 Antenna Ex .....  
 Mode LIS(2,4) .....  
 SUM/SEP SUM .....  
 Toggle OFF .....  
 TNR  
 Antenna ExEy .....  
 Mode A-32 .....  
 Sweep ACE .....