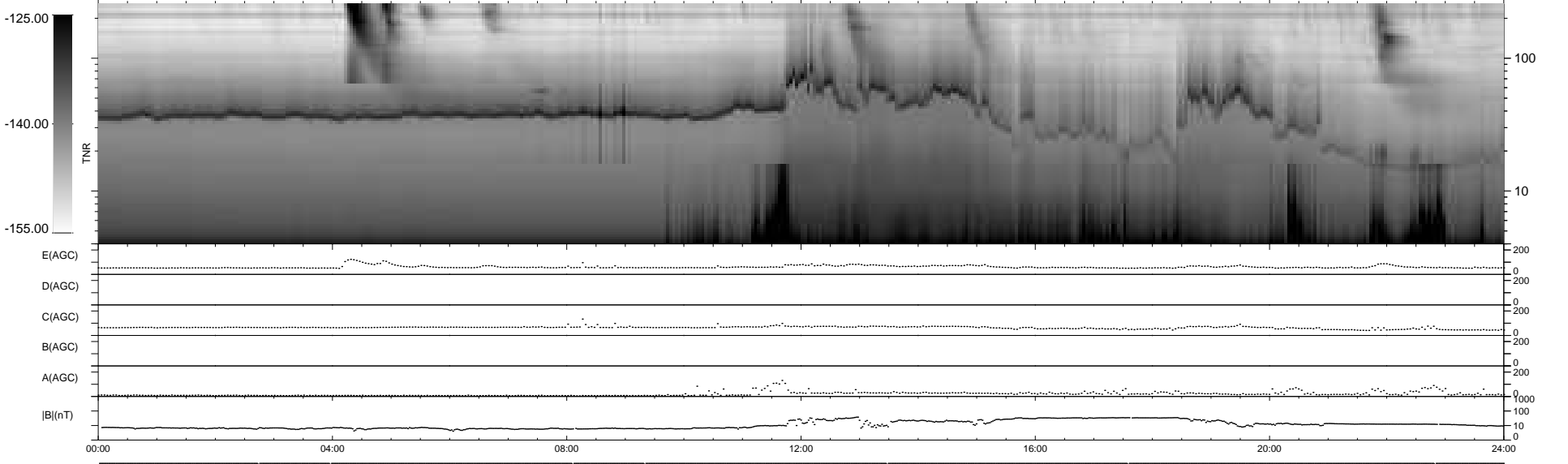
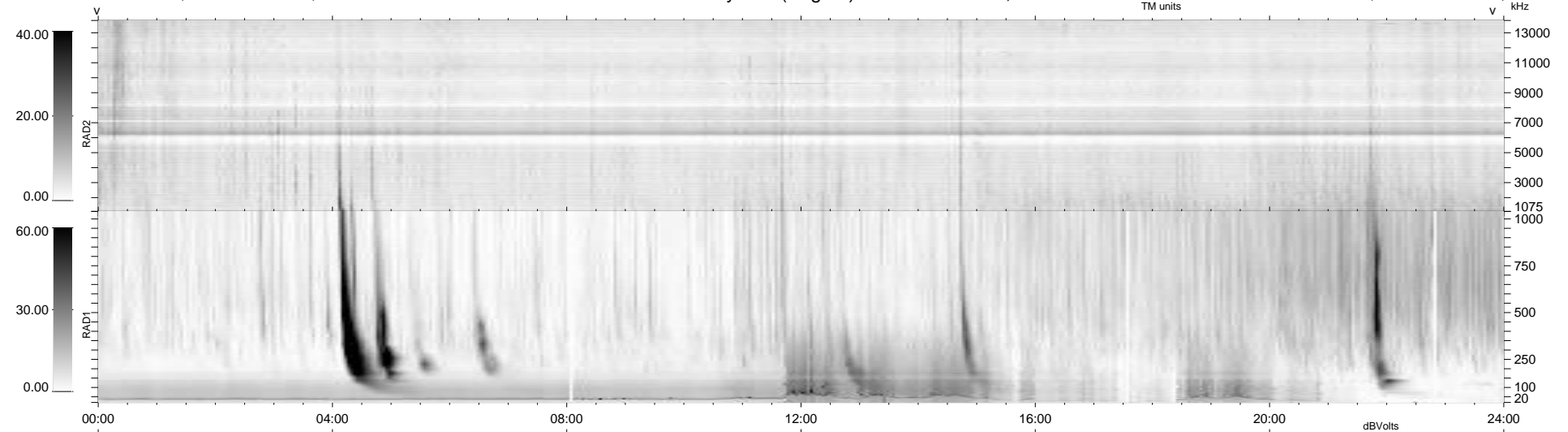


7 bad + 932 good MF/939MF projected (99%) - 0 missing MFs
 Avg interval = 180 secs
 Re = -244.15 (223.08, 99.23, 1.43 GSE)

windlib 2.0b LZ version = v03
 DAILY 2011-09-29 11:02:06
 Re = 245.18 (224.19, 99.25, 2.17 GSE)

WIND/WAVES Summary Plot (Page 1) for 26-SEP-2011, DOY = 269



RAD2
 Antenna Ey
 Mode LIN(1)
 SUM/SEP SEP
 Toggle OFF
 RAD1
 Antenna Ex
 Mode LIS(2,4)
 SUM/SEP SUM
 Toggle OFF
 TNR
 Antenna ExEy
 Mode A-32
 Sweep ACE