

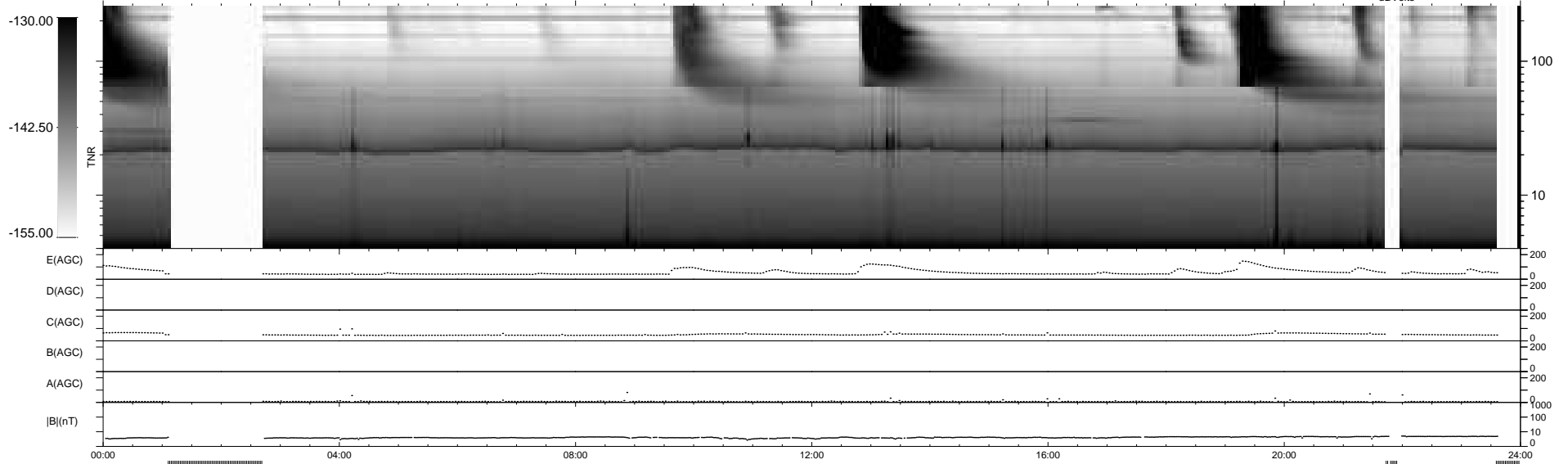
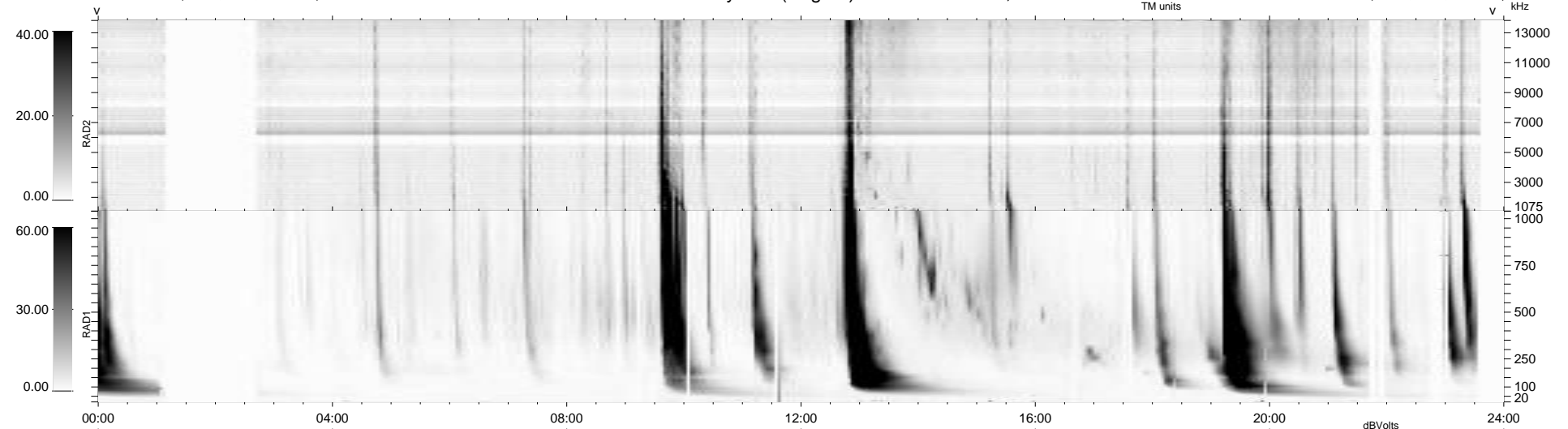
26 bad + 827 good MF/939MF projected (88%) - 86 missing MFs
 Avg interval = 180 secs
 Re = -241.92 (220.80, 98.87, -0.06 GSE)

windlib 2.0b

LZ version = v03

WIND/WAVES Summary Plot (Page 1) for 24-SEP-2011, DOY = 267

DAILY 2011-09-26 19:02:06
 Re = 243.05 (221.93, 99.10, 0.67 GSE)



RAD2
 Antenna Ey
 Mode LIN(1)
 SUM/SEP SEP
 Toggle OFF

RAD1
 Antenna Ex
 Mode LIS(2,4)
 SUM/SEP SUM
 Toggle OFF

TNR
 Antenna ExEy
 Mode A-32
 Sweep ACE