

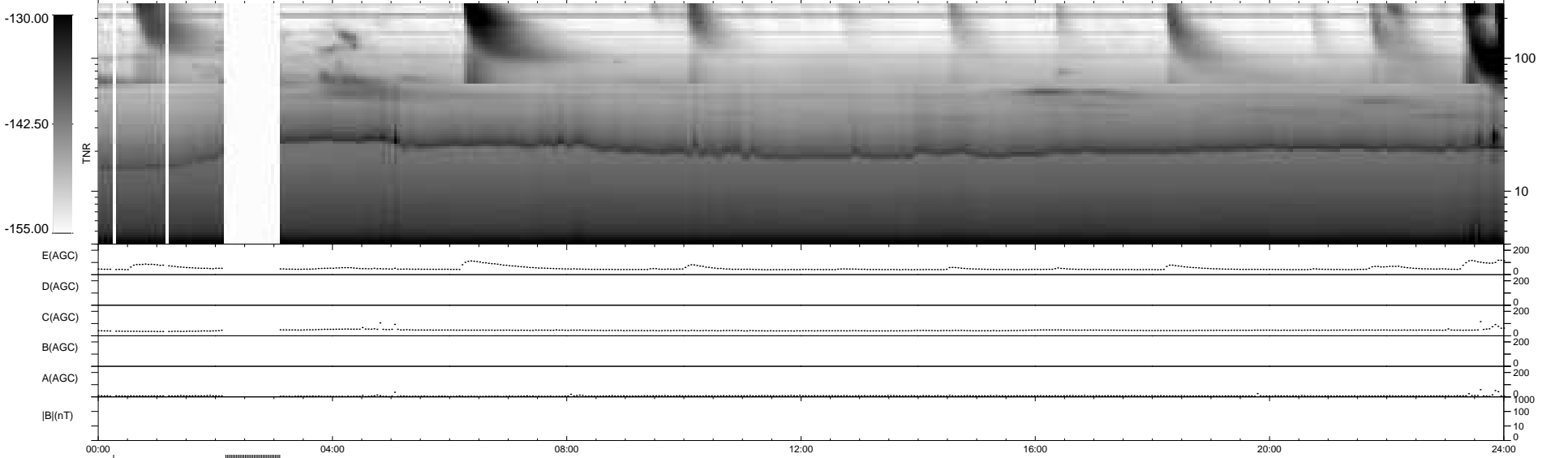
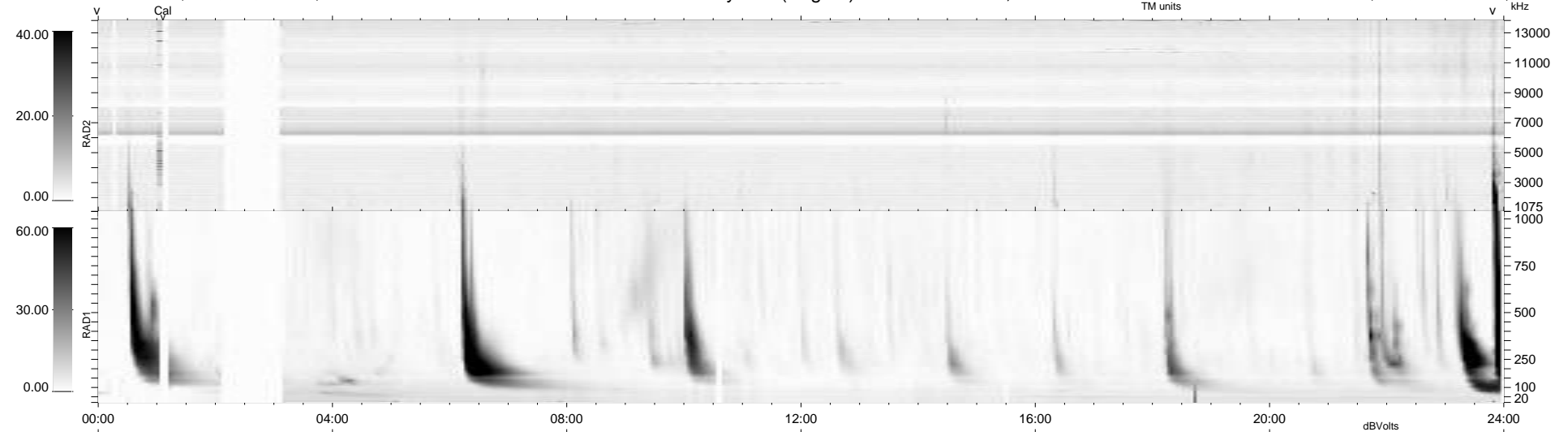
15 bad + 886 good MF/939MF projected (94%) - 38 missing MFs  
 Avg interval = 180 secs  
 Re = 240.74 (219.65, 98.54, -0.86 GSE)

windlib 2.0b

LZ version = v01

### WIND/WAVES Summary Plot (Page 1) for 23-SEP-2011, DOY = 266

DAILY 2011-09-25 02:02:05  
 Re = 241.91 (220.79, 98.87, -0.07 GSE)



```

RAD2
Antenna Ey .....
Mode LIN(1) .....
SUM/SEP SEP .....
Toggle OFF .....

RAD1
Antenna Ex .....
Mode LIS(2,4) .....
SUM/SEP SUM .....
Toggle OFF .....

TNR
Antenna ExEy .....
Mode A-32 .....
Sweep ACE .....
  
```