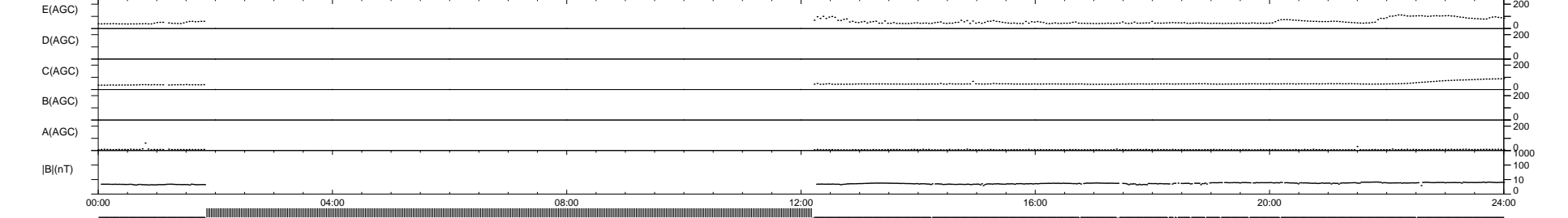
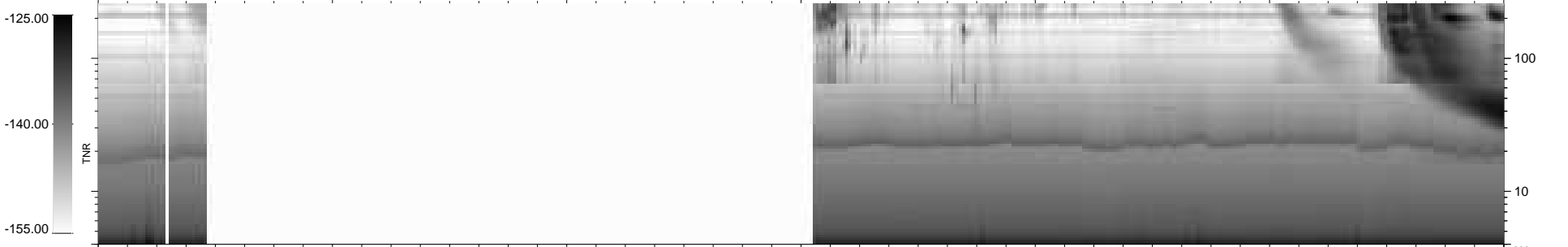
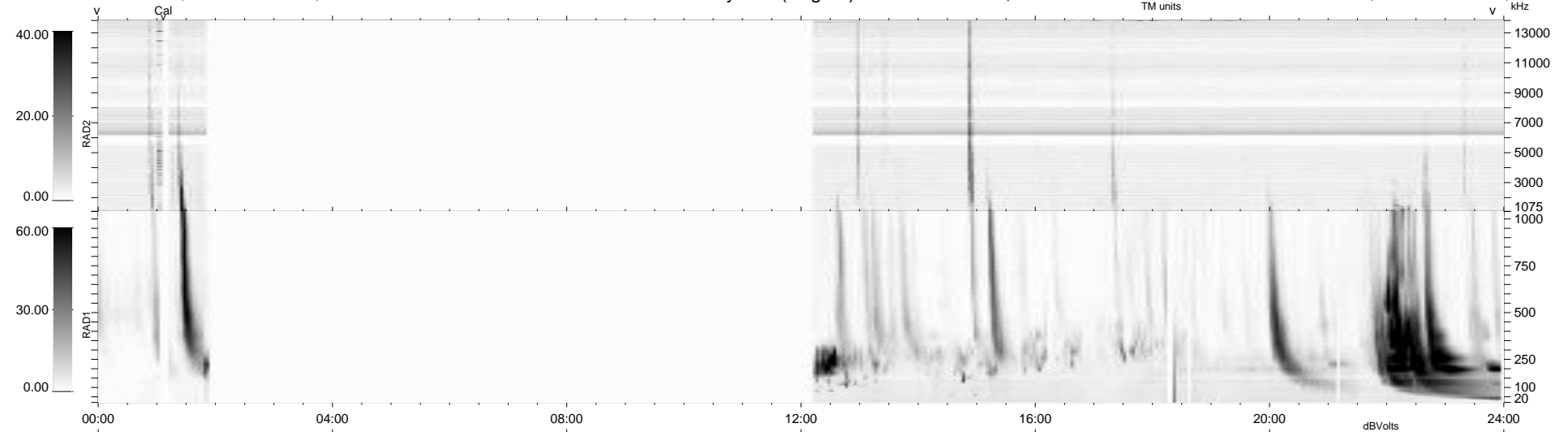


15 bad + 519 good MF/939MF projected (55%) - 405 missing MFs  
 Avg interval = 180 secs  
 Re = 238.31 (217.38, 97.63, -2.32 GSE)

windlib 2.0b LZ version = v02  
 DAILY 2011-09-26 16:02:07  
 Re = 239.53 (218.50, 98.13, -1.58 GSE)

### WIND/WAVES Summary Plot (Page 1) for 21-SEP-2011, DOY = 264



```

RAD2
Antenna Ey .....
Mode LIN(1) .....
SUM/SEP SEP .....
Toggle OFF .....

RAD1
Antenna Ex .....
Mode LIS(2,4) .....
SUM/SEP SUM .....
Toggle OFF .....

TNR
Antenna ExEy .....
Mode A-32 .....
Sweep ACE .....
  
```