

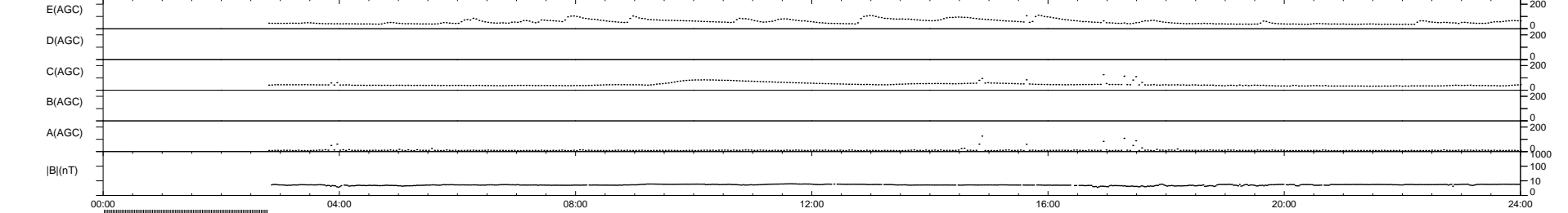
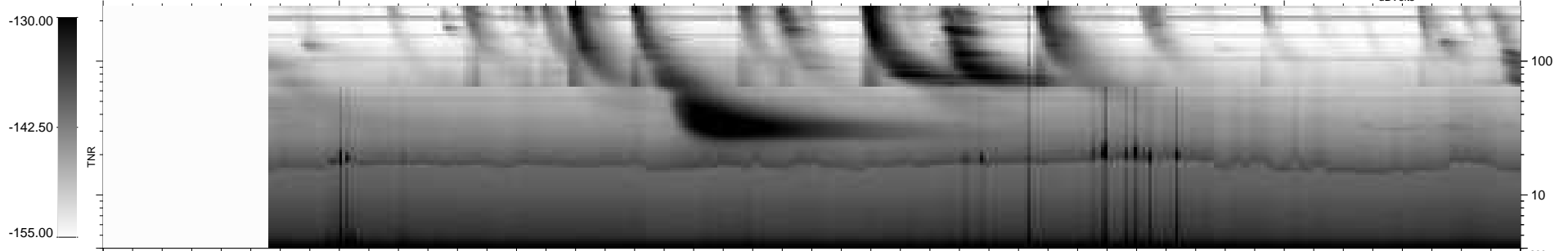
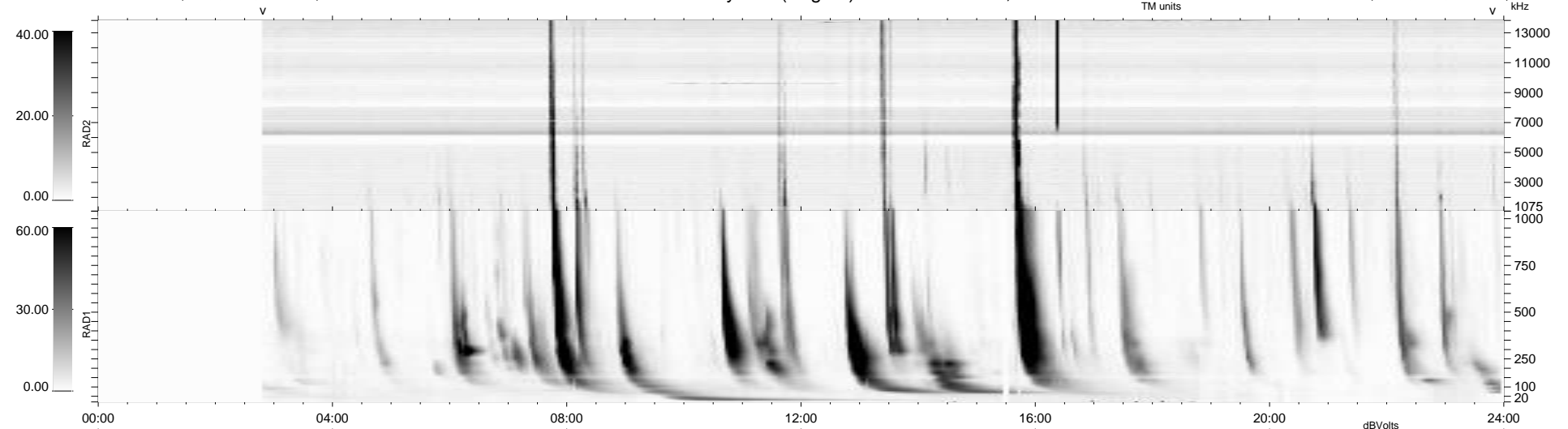
15 bad + 815 good MF/939MF projected (86%) - 109 missing MFs
Avg interval = 180 secs
Re = 235.96 (215.32, 96.45, -3.70 GSE)

windlib 2.0b

LZ version = v01

WIND/WAVES Summary Plot (Page 1) for 19-SEP-2011, DOY = 262

DAILY 2011-09-21 04:02:05
Re = 237.06 (216.26, 97.03, -3.06 GSE)



Legend for plot controls:

- RAD2 Antenna Mode SUM/SEP Toggle
- RAD1 Antenna Mode SUM/SEP Toggle
- TNR Antenna Mode Sweep