

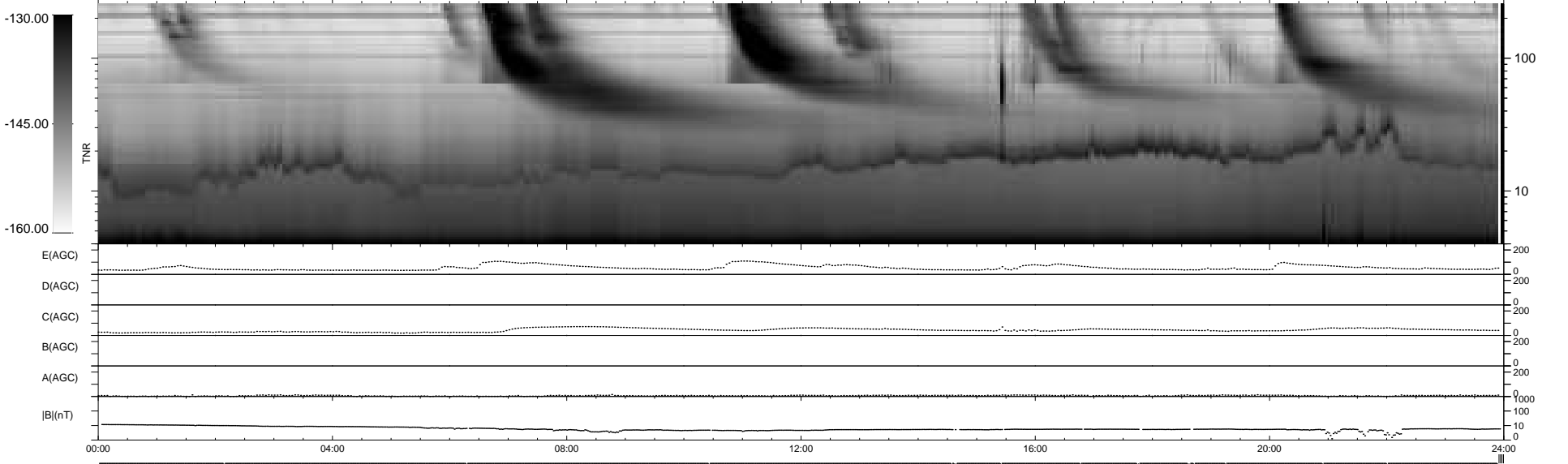
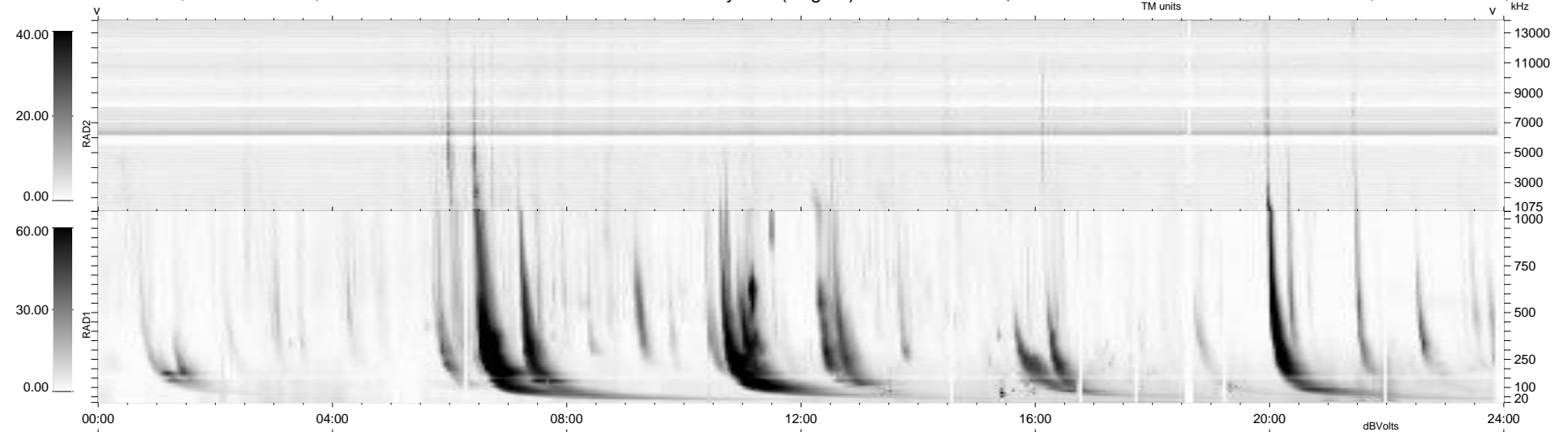
17 bad + 918 good MF/939MF projected (97%) - 4 missing MFs
 Avg interval = 180 secs
 Re = 234.57 (214.16, 95.59, -4.51 GSE)

windlib 2.0b

LZ version = v01

WIND/WAVES Summary Plot (Page 1) for 18-SEP-2011, DOY = 261

DAILY 2011-09-20 04:02:06
 Re = 235.81 (215.19, 96.36, -3.79 GSE)



RAD2
 Antenna Ey
 Mode LIN(1)
 SUM/SEP SEP
 Toggle OFF

RAD1
 Antenna Ex
 Mode LIS(2,4)
 SUM/SEP SUM
 Toggle OFF

TNR
 Antenna ExEy
 Mode A-32
 Sweep ACE