

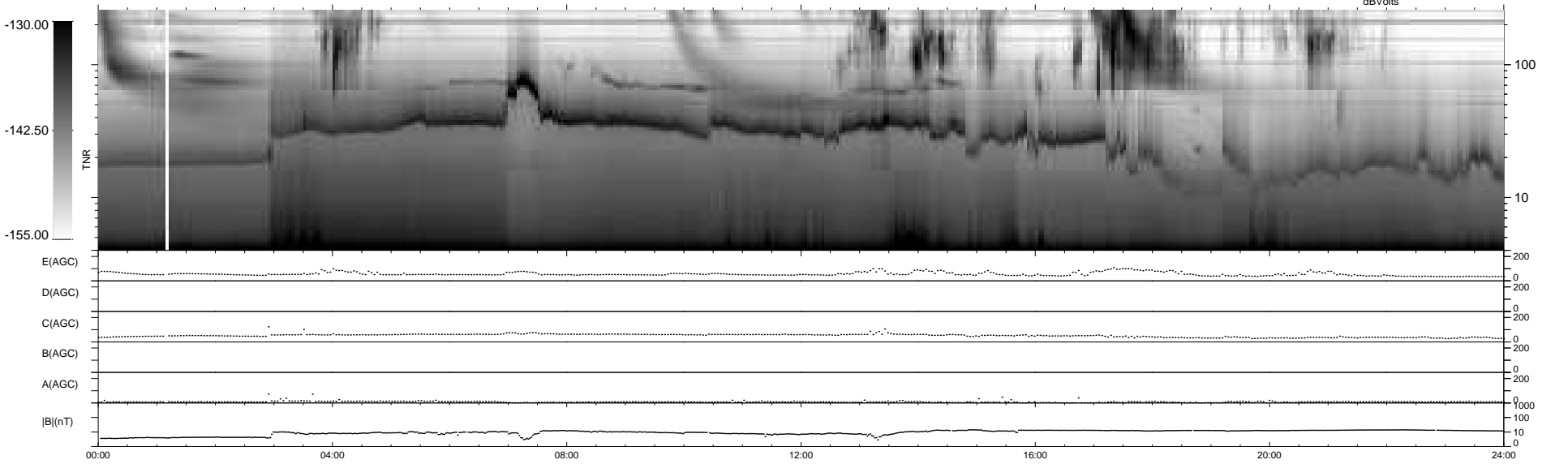
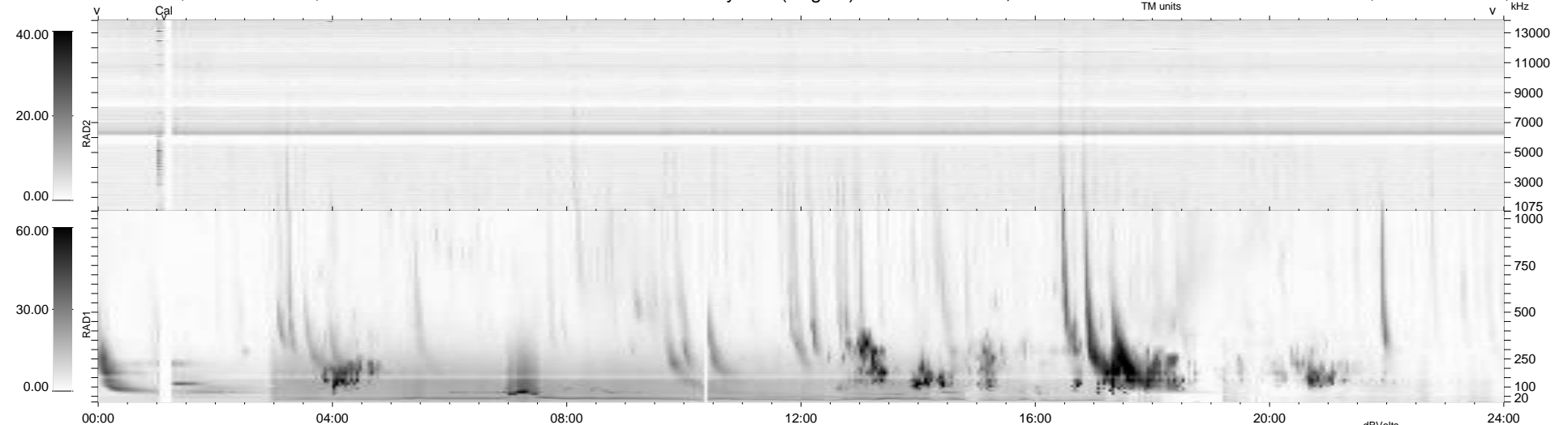
6 bad + 934 good MF/940MF projected (99%) - 0 missing MFs  
 Avg interval = 180 secs  
 Re = 233.32 (213.16, 94.73, -5.24 GSE)

windlib 2.0b

LZ version = v01

### WIND/WAVES Summary Plot (Page 1) for 17-SEP-2011, DOY = 260

DAILY 2011-09-19 02:02:06  
 Re = 234.56 (214.15, 95.59, -4.52 GSE)



RAD2  
 Antenna Ey .....  
 Mode LIN(1) .....  
 SUM/SEP SEP .....  
 Toggle OFF .....  
 RAD1  
 Antenna Ex .....  
 Mode LIS(2,4) .....  
 SUM/SEP SUM .....  
 Toggle OFF .....  
 TNR  
 Antenna ExEy .....  
 Mode A-32 .....  
 Sweep ACE .....