

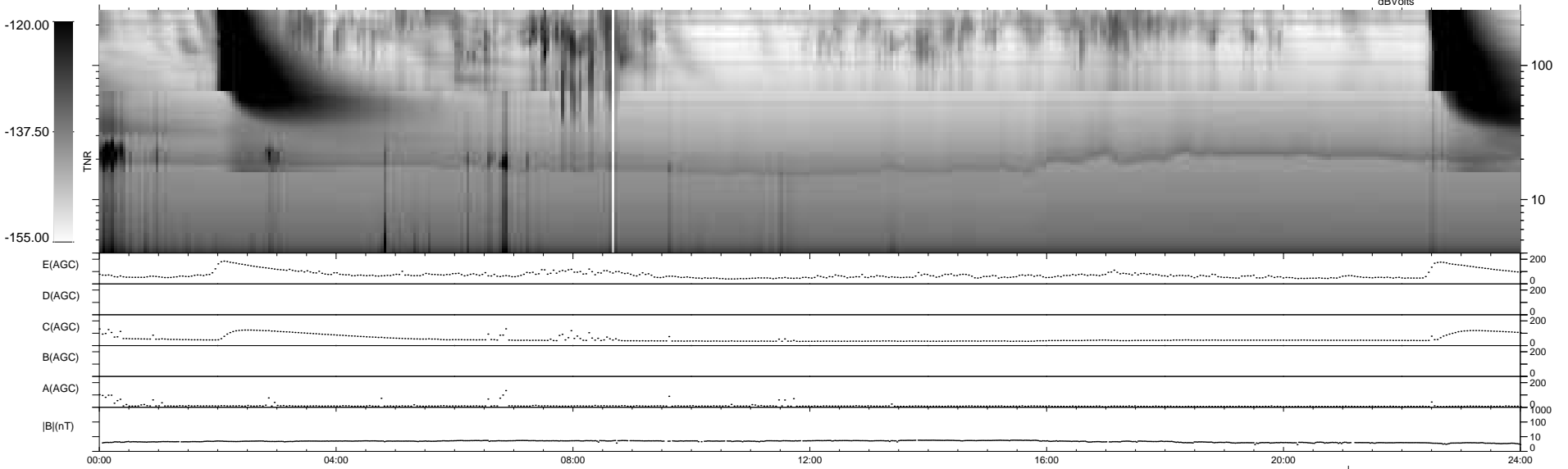
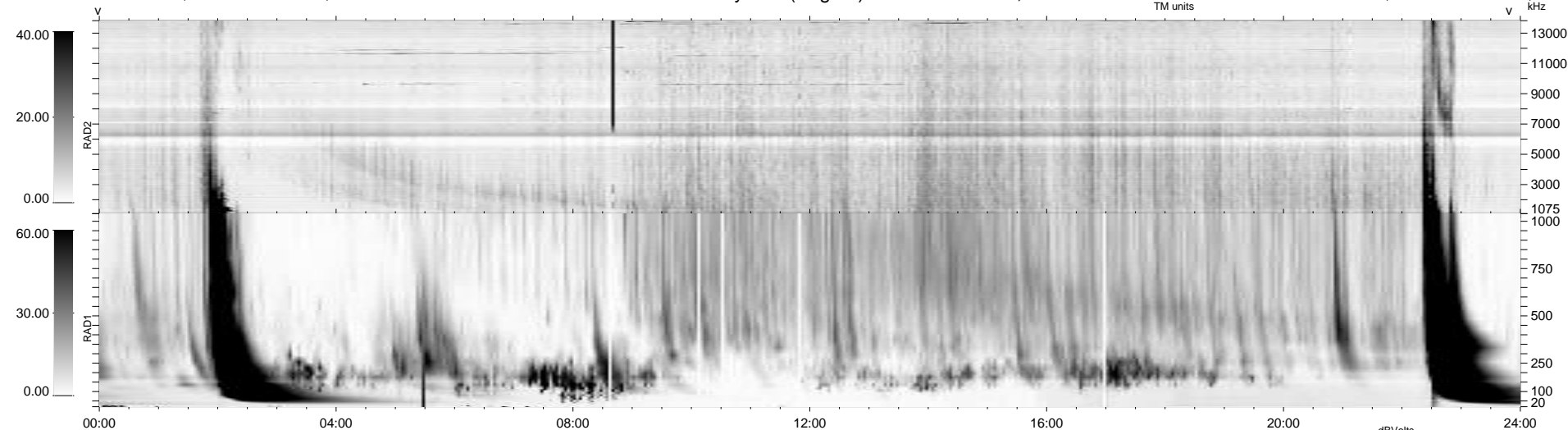
19 bad + 919 good MF/939MF projected (97%) - 1 missing MF
 Avg interval = 180 secs
 Re = 220.55 (205.88, 78.06, -12.74 GSE)

windlib 2.0b

LZ version = v01

WIND/WAVES Summary Plot (Page 1) for 06-SEP-2011, DOY = 249

DAILY 2011-09-07 11:02:06
 Re = 221.62 (206.26, 80.18, -12.12 GSE)



RAD2
 Antenna Ey
 Mode LIN(1)
 SUM/SEP SEP
 Toggle OFF

RAD1
 Antenna Ex
 Mode LIS(2,4)
 SUM/SEP SUM
 Toggle OFF

TNR
 Antenna ExEy
 Mode A-32
 Sweep ACE