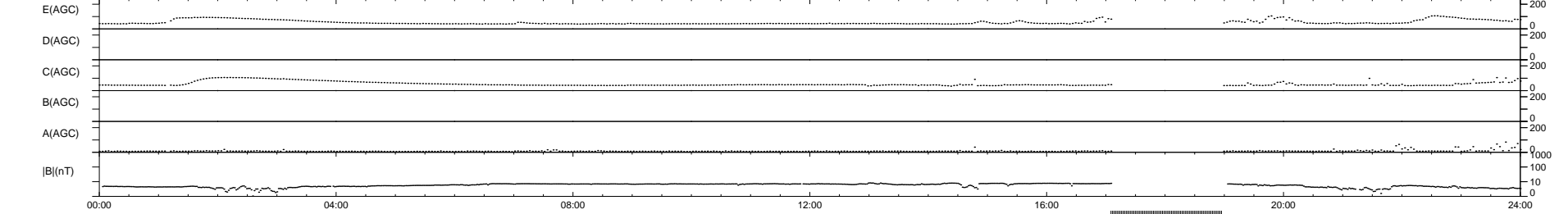
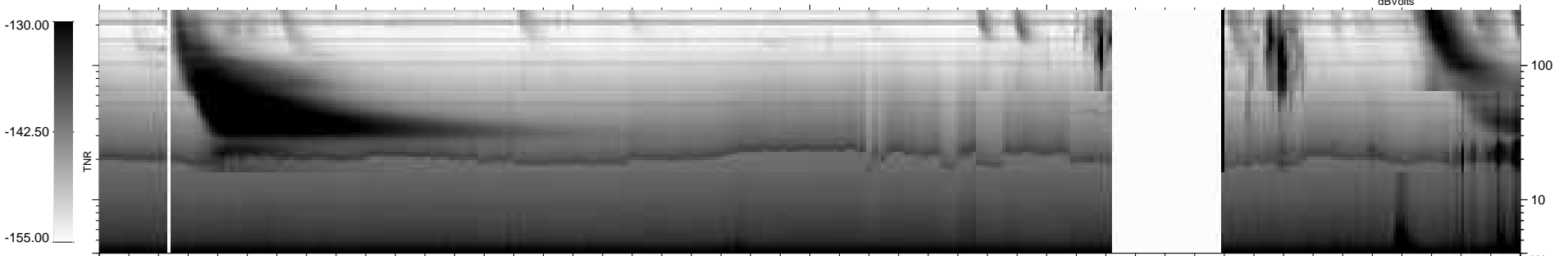
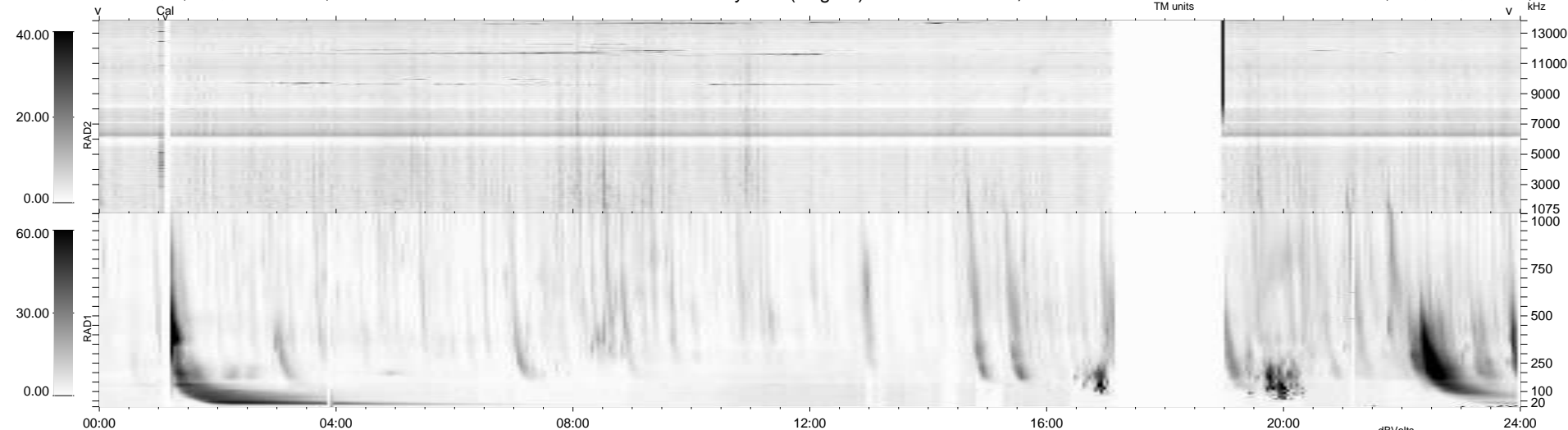


6 bad + 859 good MF/939MF projected (91%) - 74 missing MFs  
 Avg interval = 180 secs  
 Re = 219.48 (205.54, 75.79, -13.35 GSE)

windlib 2.0b LZ version = v01  
 DAILY 2011-09-06 19:02:06  
 Re = 220.54 (205.88, 78.05, -12.74 GSE)

### WIND/WAVES Summary Plot (Page 1) for 05-SEP-2011, DOY = 248



```

RAD2
Antenna Ey .....
Mode LIN(1) .....
SUM/SEP SEP .....
Toggle OFF .....

RAD1
Antenna Ex .....
Mode LIS(2,4) .....
SUM/SEP SUM .....
Toggle OFF .....

TNR
Antenna ExEy .....
Mode A-32 .....
Sweep ACE .....
  
```